

ASI 45



Short description

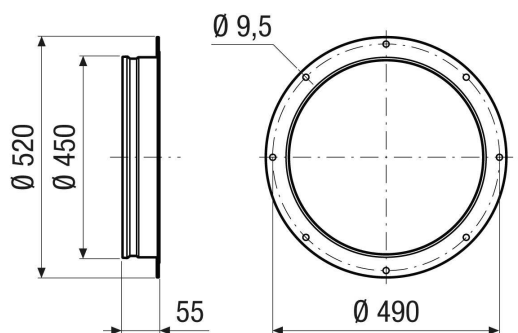
Intake socket for flow-optimised air intake, DN 450

Article number 0073.0440

Technical data

Air direction	Ventilation and air extraction
Material	Sheet steel, coated
Colour	grey
Weight	1,1 kg
Weight including packaging	1,1 kg
Size	450 mm
Width	520 mm
Height	450 mm
Depth	55 mm
Width with packaging	520 mm
Height with packaging	450 mm
Depth with packaging	55 mm
Packing unit	1 piece
Range	C
GTIN (EAN)	4012799734406

Dimensioned drawing [mm]





ASI 45