

# AWV 15 S



## Short description

Outside wall fan, DN 150, alternating current

## Application examples

Machine extraction unit, Workplace, Commercial premises, Fitness room, Canteen

Article number 0080.0997

## Technical data

Air flow volume	620 m <sup>3</sup> /h
Rotating speed	2.614 1/min
Speed controllable	✓
Reversing capacity	–
SEC average	-26 kWh/(m <sup>2</sup> *a)
Energy efficiency class	C
Type of voltage	Alternating current
Rated voltage	230 V
Frequency	50 Hz
Nominal output	106 W
I <sub>max</sub>	0,46 A
Degree of protection	IP X4
Insulation class	B
Installation site	Outside wall
Installation position	vertical / horizontal
Material	Sheet steel, galvanised
Housing material	Sheet steel, powder coated
Weight	7,58 kg
Weight including packaging	8,3 kg
Nominal size	150 mm
Width	360 mm
Height	450 mm
Depth	155 mm
Width with packaging	375 mm
Height with packaging	475 mm
Depth with packaging	180 mm
Airstream temperature at I <sub>Max</sub>	-20 °C up to 40 °C
Packing unit	1 piece
Range	C

# AWV 15 S

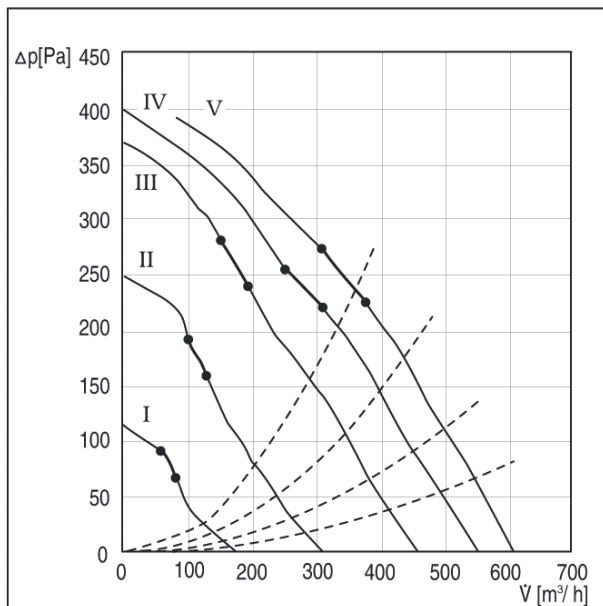
GTIN (EAN)	4012799809975
------------	---------------

## Sound power level in octave range

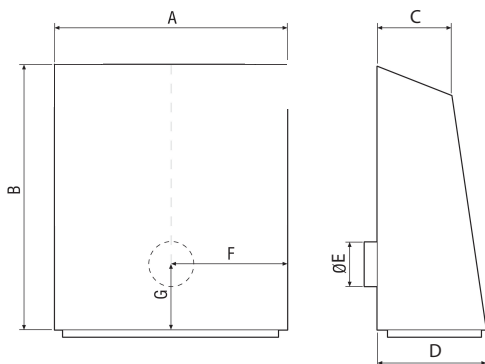
	63 Hz	125 Hz	250 Hz	500 Hz	1 kHz	2 kHz	4 kHz	8 kHz	Total
<b>L<sub>WA5, S5</sub></b> <b>(dB(A))</b>	-	-	-	-	-	-	-	-	74

L<sub>WA5</sub>= free inlet sound power level in dB.

## Characteristic curve



## Dimensioned drawing [mm]



A	B	C	D	E	F	G
360	450	116	155	148	180	180