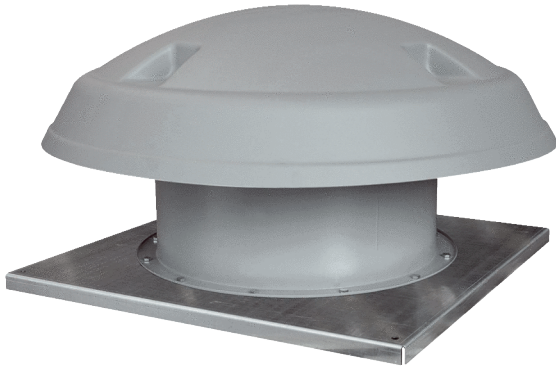


DAD 63/4



Short description

Axial roof fan, horizontal air outlet, 4-pin, DN 630, three-phase AC

Application examples

Production facility, Workplace, Commercial premises, Industrial building

Article number 0073.0074

Technical data

Air flow volume	13.274 m ³ /h
Air volume _{nom}	8.294 m ³ /h (in opt. efficiency)
Pressure p _{fs, nom}	176 Pa (in opt. efficiency)
Rotating speed n _{nom}	1.440 1/min (in opt. efficiency)
Rotating speed	1.440 1/min
Impeller type	axial
Speed controllable	✓
Reversing capacity	–
Type of voltage	Three-phase AC
Rated voltage	400 V
Frequency	50 Hz
Nominal output	1.100 W
I _{nom}	2,5 A
Degree of protection	IP 55
Insulation class	F
Pole-changeable	–
Installation site	Roof
Installation position	Vertical
Housing material	Sheet steel, galvanised
Impeller material	Polyamide
Colour	grey
Weight	59 kg
Weight including packaging	65 kg
Nominal size	630 mm
Width	1.100 mm
Height	565 mm
Depth	1.100 mm
Width with packaging	1.200 mm
Height with packaging	800 mm

DAD 63/4

Depth with packaging	1.200 mm
Airstream temperature at I_{Max}	-15 °C up to 50 °C
PTC DIN 44082	M 100
Packing unit	1 piece
Range	C
GTIN (EAN)	4012799730743

Technical data according to ErP in Best Efficiency Point (BEP)

Total efficiency η	44,455 %
Measurement category	C
Efficiency category	static
Efficiency level N	50,5
VSD necessary	No
Year of manufacture	see rating plate
Manufacturer's name / official registration number / manufacturer's place of establishment	Maico Elektroapparate-Fabrik GmbH / Freiburg registration court, HRB 601233 / see mounting instructions
Art. No.	0073.0074
P_{BEP} / Air volume $_{BEP}$ / $P_{fs, BEP}$	1,093 kW / 8.294 m ³ /h
n_{BEP}	1.430 1/min
Specific ratio	≈ 1
Information about dismantling and disposal	see mounting instructions
Information about installation, operation and repairs	see mounting instructions
Objects used to measure efficiency which are not described by the measurement category	-
I_{BEP}	2,5 A
$P_{f, BEP}$	176 Pa
Sound power level $_{L_{WA7}}$	82 dB(A)

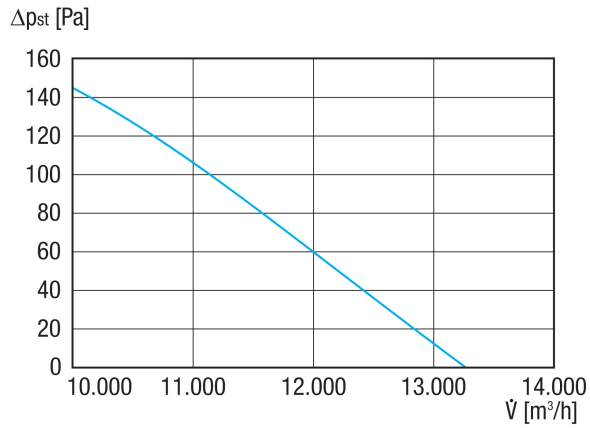
Sound power level in octave range

	63 Hz	125 Hz	250 Hz	500 Hz	1 kHz	2 kHz	4 kHz	8 kHz	Total
$L_{WA5, S5}$ (dB(A))	57	64	69	74	77	76	75	69	82

L_{WA5} = free inlet sound power level in dB.

DAD 63/4

Characteristic curve



Dimensioned drawing [mm]

