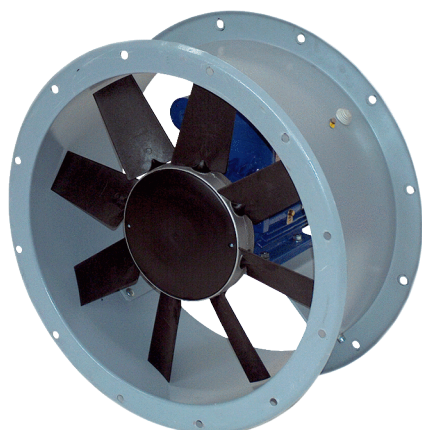


DAR 100/8-1 Ex



Short description

Axial duct fan, DN 1000, explosion-proof, nominal power 2.2 kW, medium: gas

Application examples

Production facility, Workplace, Process exhaust air, Industrial building

Article number 0073.0378

Technical data

Model	Motor variant 1
Air flow volume	35.000 m ³ /h
Rotating speed	720 1/min
Impeller type	axial
Rated voltage	400 V
Frequency	50 Hz
Nominal output	2.200 W
I _{nom}	5,2 A
I _{max}	5,2 A
Degree of protection	IP 55
Insulation class	F
Installation site	Duct connection
Installation position	vertical / horizontal
Housing material	Sheet steel, galvanised
Colour	grey
Weight	215 kg
Weight including packaging	232 kg
Nominal size	1.000 mm
Width	1.130 mm
Height	750 mm
Depth	1.130 mm
Width with packaging	1.200 mm
Height with packaging	1.040 mm
Depth with packaging	1.200 mm
EX designation in accordance with the ATEX Directive	Ex II 2 G
EX designation in accordance with standard	Ex db IIB+H2 T4 Gb X / Ex h IIB+H2 T4 Gb X
Ta ambient temperature	-20 °C ≤ Ta ≤ +40 °C
Operating mode	S1
PTC DIN 44082	M 100

DAR 100/8-1 Ex

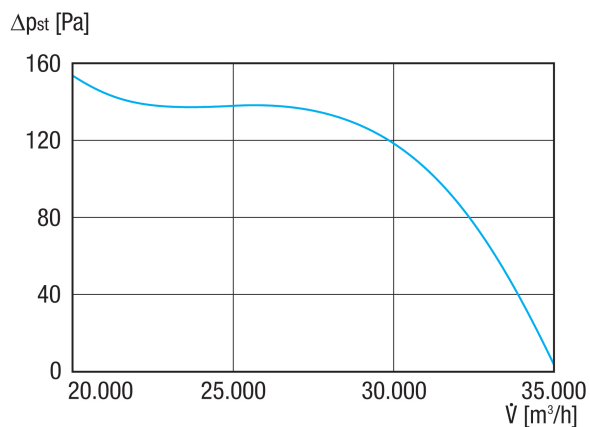
Temperature class	T4
Packing unit	1 piece
Range	C
GTIN (EAN)	4012799733782

Sound power level in octave range

	63 Hz	125 Hz	250 Hz	500 Hz	1 kHz	2 kHz	4 kHz	8 kHz	Total
L_{WA5, S5} (dB(A))	55	73	76	80	81	79	76	71	86

L_{WA5}= free inlet sound power level in dB.

Characteristic curve



DAR 100/8-1 Ex

Dimensioned drawing [mm]

