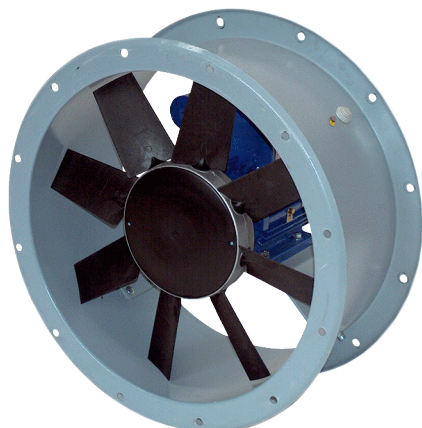


DAR 63/4-2 Ex



Short description

Axial duct fan, DN 630, explosion-proof, nominal power 1.1 kW, medium: gas

Application examples

Production facility, Workplace, Process exhaust air, Industrial building

Article number 0073.0347

Technical data

Model	Motor variant 2
Air flow volume	14.293 m ³ /h
Rotating speed	1.440 1/min
Impeller type	axial
Speed controllable	✓
Rated voltage	400 V
Frequency	50 Hz
Nominal output	1.100 W
I _{nom}	2,7 A
I _{max}	2,8 A
Degree of protection	IP 55
Insulation class	F
Pole-changeable	–
Installation site	Duct connection
Installation position	vertical / horizontal
Housing material	Sheet steel, galvanised
Colour	grey
Weight	33 kg
Weight including packaging	55 kg
Nominal size	630 mm
Width	730 mm
Height	500 mm
Depth	730 mm
Width with packaging	830 mm
Height with packaging	600 mm
Depth with packaging	830 mm
EX designation in accordance with the ATEX Directive	Ex II 2 G
EX designation in accordance with standard	Ex db IIB+H2 T4 Gb X / Ex h IIB+H2 T4 Gb X
Ta ambient temperature	-20 °C ≤ Ta ≤ +40 °C

DAR 63/4-2 Ex

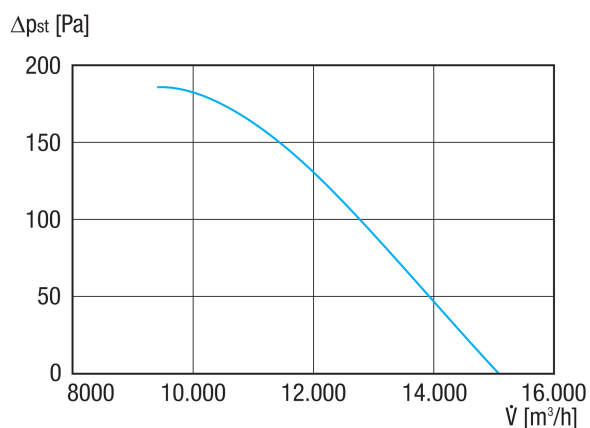
Operating mode	S1
PTC DIN 44082	M 100
Temperature class	T4
Packing unit	1 piece
Range	C
GTIN (EAN)	4012799733478

Sound power level in octave range

	63 Hz	125 Hz	250 Hz	500 Hz	1 kHz	2 kHz	4 kHz	8 kHz	Total
L_{WA5, S5} (dB(A))	55	73	75	80	81	79	76	71	85

L_{WA5}= free inlet sound power level in dB.

Characteristic curve



DAR 63/4-2 Ex

Dimensioned drawing [mm]

