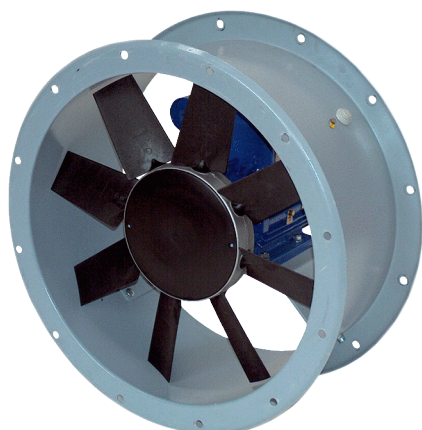


# DAR 80/8-1 Ex



## Short description

Axial duct fan, DN 800, explosion-proof, nominal power 0.55 kW, medium: gas

## Application examples

Production facility, Workplace, Process exhaust air, Industrial building

Article number 0073.0360

## Technical data

Model	Motor variant 1
Air flow volume	14.751 m <sup>3</sup> /h
Rotating speed	720 1/min
Impeller type	axial
Speed controllable	✓
Rated voltage	400 V
Frequency	50 Hz
Nominal output	550 W
I <sub>nom</sub>	1,85 A
I <sub>max</sub>	1,9 A
Degree of protection	IP 55
Insulation class	F
Pole-changeable	–
Installation site	Duct connection
Installation position	vertical / horizontal
Housing material	Sheet steel, galvanised
Colour	grey
Weight	90 kg
Weight including packaging	135 kg
Nominal size	800 mm
Width	910 mm
Height	590 mm
Depth	910 mm
Width with packaging	1.140 mm
Height with packaging	730 mm
Depth with packaging	1.140 mm
EX designation in accordance with the ATEX Directive	Ex II 2 G
EX designation in accordance with standard	Ex db IIB+H2 T4 Gb X / Ex h IIB+H2 T4 Gb X
Ta ambient temperature	-20 °C ≤ Ta ≤ +40 °C

# DAR 80/8-1 Ex

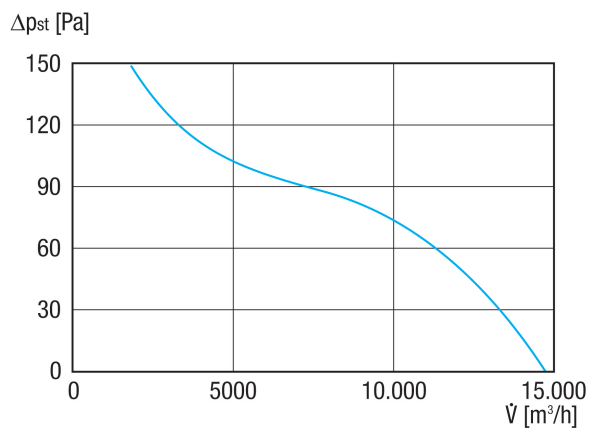
Operating mode	S1
PTC DIN 44082	M 100
Temperature class	T4
Packing unit	1 piece
Range	C
GTIN (EAN)	4012799733607

## Sound power level in octave range

	63 Hz	125 Hz	250 Hz	500 Hz	1 kHz	2 kHz	4 kHz	8 kHz	Total
<b>L<sub>WA5, S5</sub></b> <b>(dB(A))</b>	53	57	66	71	72	70	67	62	76

L<sub>WA5</sub>= free inlet sound power level in dB.

## Characteristic curve



# DAR 80/8-1 Ex

Dimensioned drawing [mm]

