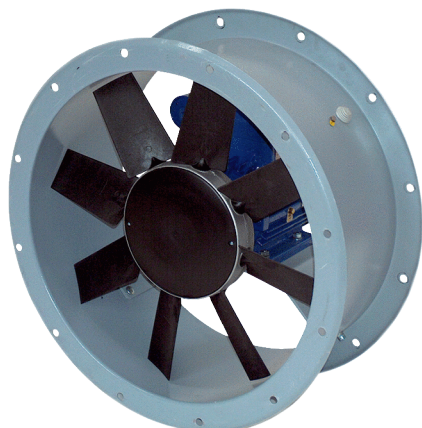


DAR 90/4-2 Ex



Short description

Axial duct fan, DN 900, explosion-proof, nominal power 7.5 kW, medium: gas

Application examples

Production facility, Workplace, Process exhaust air, Industrial building

Article number 0073.0364

Technical data

| | |
|--|--|
| Model | Motor variant 2 |
| Air flow volume | 39.500 m ³ /h |
| Rotating speed | 1.440 1/min |
| Impeller type | axial |
| Speed controllable | ✓ |
| Rated voltage | 400 V |
| Frequency | 50 Hz |
| Nominal output | 7.500 W |
| I _{nom} | 14,4 A |
| I _{max} | 14,8 A |
| Degree of protection | IP 55 |
| Insulation class | F |
| Pole-changeable | – |
| Installation site | Duct connection |
| Installation position | vertical / horizontal |
| Housing material | Sheet steel, galvanised |
| Colour | grey |
| Weight | 120 kg |
| Weight including packaging | 195 kg |
| Nominal size | 900 mm |
| Width | 1.030 mm |
| Height | 680 mm |
| Depth | 1.030 mm |
| Width with packaging | 1.040 mm |
| Height with packaging | 830 mm |
| Depth with packaging | 1.040 mm |
| EX designation in accordance with the ATEX Directive | Ex II 2 G |
| EX designation in accordance with standard | Ex db IIB+H2 T4 Gb X / Ex h IIB+H2 T4 Gb X |
| Ta ambient temperature | -20 °C ≤ Ta ≤ +40 °C |

DAR 90/4-2 Ex

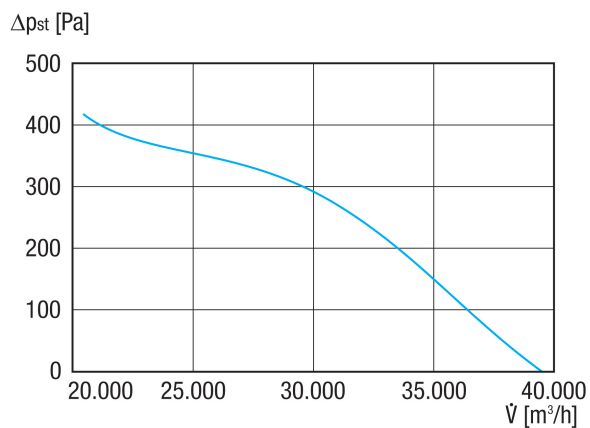
| | |
|-------------------|---------------|
| Operating mode | S1 |
| PTC DIN 44082 | M 100 |
| Temperature class | T4 |
| Packing unit | 1 piece |
| Range | C |
| GTIN (EAN) | 4012799733645 |

Sound power level in octave range

| | 63 Hz | 125 Hz | 250 Hz | 500 Hz | 1 kHz | 2 kHz | 4 kHz | 8 kHz | Total |
|--|-------|--------|--------|--------|-------|-------|-------|-------|-------|
| L_{WA5, S5} (dB(A)) | 67 | 78 | 94 | 92 | 93 | 91 | 88 | 83 | 99 |

L_{WA5}= free inlet sound power level in dB.

Characteristic curve



DAR 90/4-2 Ex

Dimensioned drawing [mm]

