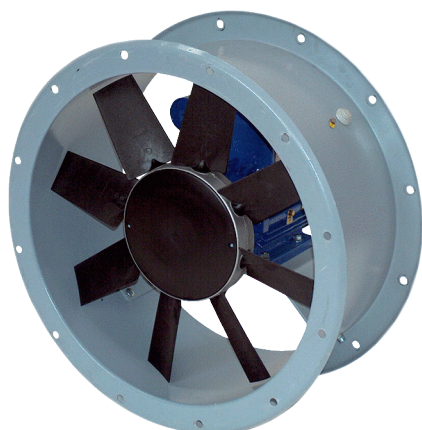


# DAR 90/6-2 Ex



## Short description

Axial duct fan, DN 900, explosion-proof, nominal power 2.2 kW, motor variant 2, medium: gas

## Application examples

Production facility, Workplace, Process exhaust air, Industrial building

Article number 0073.0367

## Technical data

|  |  |
|--|--|
| Model  | Motor variant 2                            |
| Air flow volume                                      | 28.649 m <sup>3</sup> /h                   |
| Rotating speed                                       | 960 1/min                                  |
| Impeller type  | axial                                      |
| Speed controllable                                   | ✓  |
| Rated voltage  | 400 V                                      |
| Frequency  | 50 Hz                                      |
| Nominal output                                       | 2.200 W                                    |
| I <sub>nom</sub>                                     | 5,4 A                                      |
| I <sub>max</sub>                                     | 4,9 A                                      |
| Degree of protection                                 | IP 55                                      |
| Insulation class                                     | F  |
| Pole-changeable                                      | –  |
| Installation site                                    | Duct connection                            |
| Installation position                                | vertical / horizontal                      |
| Housing material                                     | Sheet steel, galvanised                    |
| Colour   | grey                                       |
| Weight   | 120 kg                                     |
| Weight including packaging                           | 195 kg                                     |
| Nominal size   | 900 mm                                     |
| Width  | 1.030 mm                                   |
| Height   | 680 mm                                     |
| Depth  | 1.030 mm                                   |
| Width with packaging                                 | 1.040 mm                                   |
| Height with packaging                                | 830 mm                                     |
| Depth with packaging                                 | 1.040 mm                                   |
| EX designation in accordance with the ATEX Directive | Ex II 2 G                                  |
| EX designation in accordance with standard           | Ex db IIB+H2 T4 Gb X / Ex h IIB+H2 T4 Gb X |
| Ta ambient temperature                               | -20 °C ≤ Ta ≤ +40 °C                       |

# DAR 90/6-2 Ex

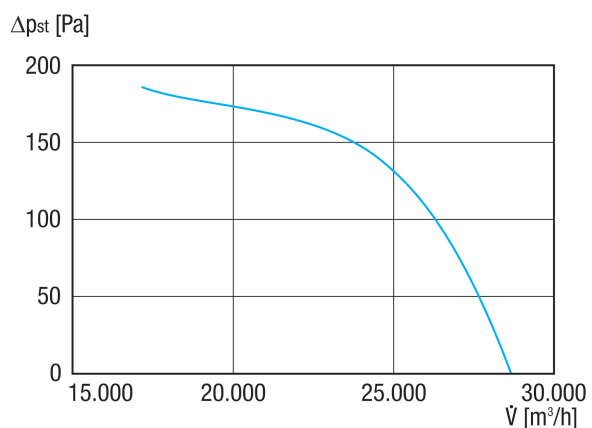
|                   |               |
|-------------------|---------------|
| Operating mode    | S1            |
| PTC DIN 44082     | M 100         |
| Temperature class | T4            |
| Packing unit      | 1 piece       |
| Range             | C             |
| GTIN (EAN)        | 4012799733676 |

## Sound power level in octave range

|  | 63 Hz | 125 Hz | 250 Hz | 500 Hz | 1 kHz | 2 kHz | 4 kHz | 8 kHz | Total |
|--|-------|--------|--------|--------|-------|-------|-------|-------|-------|
| <b>L<sub>WA5, S5</sub></b><br><b>(dB(A))</b> | 58    | 76     | 78     | 83     | 84    | 82    | 79    | 74    | 88    |

L<sub>WA5</sub>= free inlet sound power level in dB.

## Characteristic curve



# DAR 90/6-2 Ex

Dimensioned drawing [mm]

