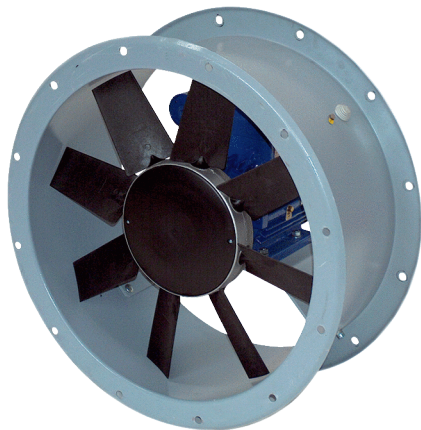


DAR 90/6 2,2



Short description

Axial duct fan, DN 900, three-phase AC, nominal power 2.2 kW

Application examples

Production facility, Workplace, Commercial premises, Industrial building

Article number 0073.0161

Technical data

| | |
|---|--------------------------------|
| Air flow volume | 28.649 m³/h |
| Rotating speed | 960 1/min |
| Impeller type | axial |
| Speed controllable | ✓ |
| Reversing capacity | – |
| Type of voltage | Three-phase AC |
| Rated voltage | 400 V |
| Frequency | 50 Hz |
| Nominal output | 2.200 W |
| I _{nom} | 5,45 A |
| Degree of protection | IP 55 |
| Insulation class | F |
| Pole-changeable | – |
| Installation site | Duct |
| Installation position | Horizontal |
| Housing material | Sheet steel with epoxy coating |
| Impeller material | Polyamide |
| Colour | grey |
| Weight | 113 kg |
| Weight including packaging | 129 kg |
| Nominal size | 900 mm |
| Width | 1.030 mm |
| Height | 680 mm |
| Depth | 1.030 mm |
| Width with packaging | 1.140 mm |
| Height with packaging | 830 mm |
| Depth with packaging | 1.140 mm |
| Airstream temperature at I _{Max} | -10 °C up to 50 °C |
| PTC DIN 44082 | M 100 |

DAR 90/6 2,2

| | |
|--------------|---------------|
| Packing unit | 1 piece |
| Range | C |
| GTIN (EAN) | 4012799731610 |

Technical data according to ErP in Best Efficiency Point (BEP)

| | |
|--|--|
| Total efficiency η | 40,2 % |
| Measurement category | C |
| Efficiency category | static |
| Efficiency level N | 44,4 |
| VSD necessary | No |
| Year of manufacture | see rating plate |
| Manufacturer's name / official registration number / manufacturer's place of establishment | Maico Elektroapparate-Fabrik GmbH / Freiburg registration court, HRB 601233 / Villingen-Schwenningen |
| Art. No. | 0073.0161 |
| P_{BEP} / Air volume $_{BEP}$ / $P_{fs, BEP}$ | 2,208 kW / 17.183 m ³ /h / 186,1 Pa |
| n_{BEP} | 960 1/min |
| Specific ratio | ≈ 1 |
| Information about dismantling and disposal | see mounting instructions |
| Information about installation, operation and repairs | see mounting instructions |
| Objects used to measure efficiency which are not described by the measurement category | - |
| I_{BEP} | 5,45 A |
| Sound power level $_{L_{WA7}}$ | 86 dB(A) |

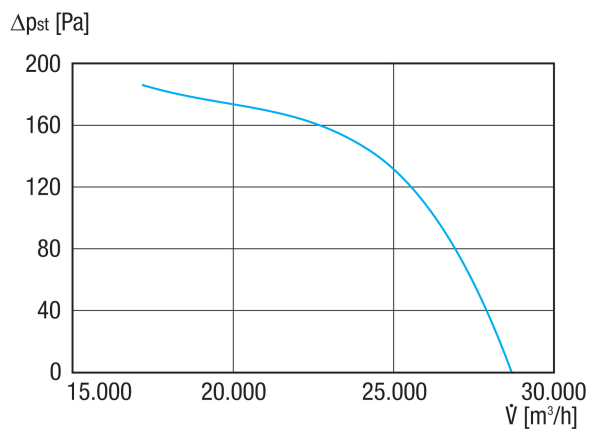
Sound power level in octave range

| | 63 Hz | 125 Hz | 250 Hz | 500 Hz | 1 kHz | 2 kHz | 4 kHz | 8 kHz | Total |
|---|-------|--------|--------|--------|-------|-------|-------|-------|-------|
| $L_{WA5, S5}$ (dB(A)) | 58 | 69 | 76 | 79 | 81 | 80 | 78 | 72 | 86 |

L_{WA5} = free inlet sound power level in dB.

DAR 90/6 2,2

Characteristic curve



Dimensioned drawing [mm]

