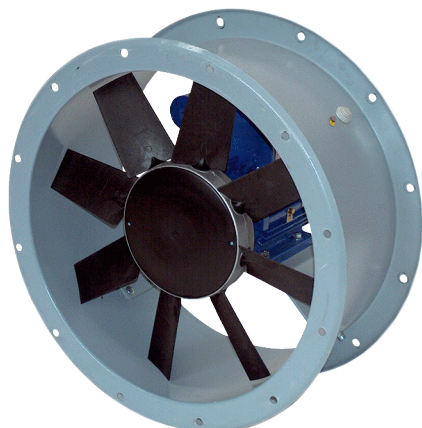


# DAR 90/8-1 Ex



## Short description

Axial duct fan, DN 900, explosion-proof, nominal power 1.5 kW, medium: gas

## Application examples

Production facility, Workplace, Process exhaust air, Industrial building

Article number 0073.0369

## Technical data

Model	Motor variant 1
Air flow volume	23.923 m <sup>3</sup> /h
Rotating speed	720 1/min
Impeller type	axial
Speed controllable	✓
Rated voltage	400 V
Frequency	50 Hz
Nominal output	1.500 W
I <sub>nom</sub>	4,3 A
I <sub>max</sub>	4,3 A
Degree of protection	IP 55
Insulation class	F
Pole-changeable	–
Installation site	Duct connection
Installation position	vertical / horizontal
Housing material	Sheet steel, galvanised
Colour	grey
Weight	120 kg
Weight including packaging	195 kg
Nominal size	900 mm
Width	1.030 mm
Height	680 mm
Depth	1.030 mm
Width with packaging	1.040 mm
Height with packaging	830 mm
Depth with packaging	1.040 mm
EX designation in accordance with the ATEX Directive	Ex II 2 G
EX designation in accordance with standard	Ex db IIB+H2 T4 Gb X / Ex h IIB+H2 T4 Gb X
Ta ambient temperature	-20 °C ≤ Ta ≤ +40 °C

# DAR 90/8-1 Ex

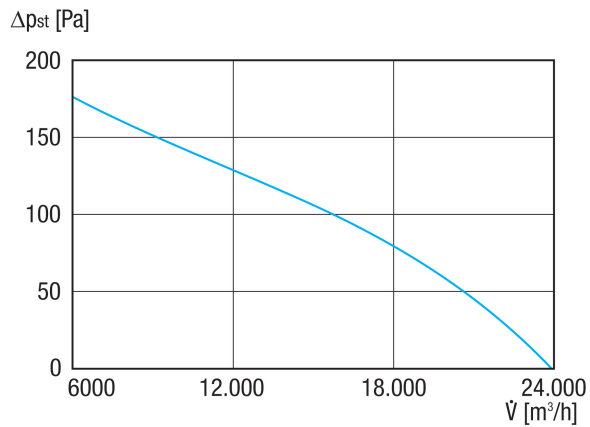
Operating mode	S1
PTC DIN 44082	M 100
Temperature class	T4
Packing unit	1 piece
Range	C
GTIN (EAN)	4012799733690

## Sound power level in octave range

	63 Hz	125 Hz	250 Hz	500 Hz	1 kHz	2 kHz	4 kHz	8 kHz	Total
<b>L<sub>WA5, S5</sub></b> <b>(dB(A))</b>	53	71	73	78	79	77	74	69	83

L<sub>WA5</sub>= free inlet sound power level in dB.

## Characteristic curve



# DAR 90/8-1 Ex

Dimensioned drawing [mm]

