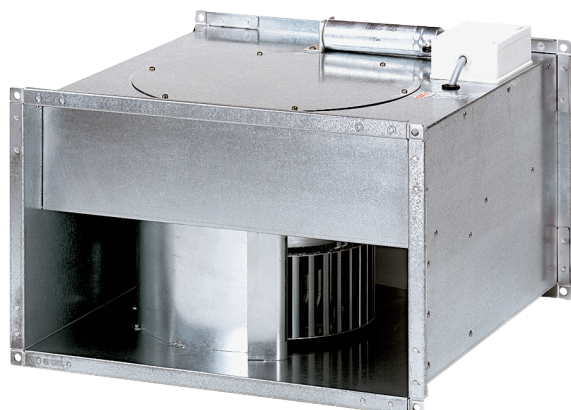


DPK 22/4 B



Short description

Centrifugal channel fan, three-phase AC

Article number 0086.0661

Technical data

Air flow volume	1.700 m ³ /h
Speed controllable	✓
Type of voltage	Three-phase AC
Rated voltage	400 V
Frequency	50 Hz
I _{max}	0,8 A
Degree of protection	IP 55
Insulation class	B
Mains cable	5 x 1,5 mm ²
Installation position	vertical / horizontal
Weight	17,7 kg
Weight including packaging	19,6 kg
Channel dimension	500 mm x 250 mm
Width with packaging	545 mm
Height with packaging	330 mm
Depth with packaging	560 mm
Airstream temperature at nominal current	-20 °C up to 60 °C
Airstream temperature at I _{Max}	-20 °C up to 60 °C
Packing unit	1 piece
Range	D
GTIN (EAN)	4012799866619

Sound power level in octave range

	63 Hz	125 Hz	250 Hz	500 Hz	1 kHz	2 kHz	4 kHz	8 kHz	Total
L _{WA2, S1} (dB(A))	25	30	34	34	33	27	15	2	39
L _{WA2, S2} (dB(A))	33	39	42	42	40	38	30	15	48

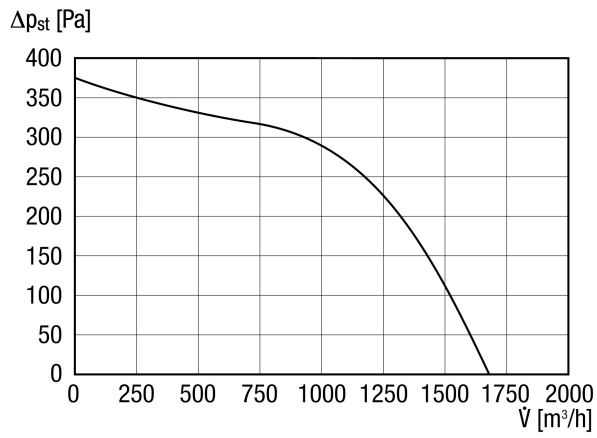
DPK 22/4 B

	63 Hz	125 Hz	250 Hz	500 Hz	1 kHz	2 kHz	4 kHz	8 kHz	Total
L_{WA2}, S3 (dB(A))	37	44	46	48	45	44	38	26	53
L_{WA2}, S4 (dB(A))	42	50	52	53	51	50	45	35	58
L_{WA2}, S5 (dB(A))	49	57	60	59	59	58	54	46	66
L_{WA5}, S1 (dB(A))	21	33	37	40	40	39	32	17	46
L_{WA5}, S2 (dB(A))	29	43	45	49	48	50	46	34	55
L_{WA5}, S3 (dB(A))	33	49	51	54	54	56	54	43	61
L_{WA5}, S4 (dB(A))	38	55	56	59	60	62	61	52	67
L_{WA5}, S5 (dB(A))	45	62	64	66	68	780	69	63	75
L_{WA6}, S1 (dB(A))	22	30	38	46	47	43	36	21	50
L_{WA6}, S2 (dB(A))	31	39	46	55	55	53	51	38	60
L_{WA6}, S3 (dB(A))	35	45	51	50	61	59	59	53	66
L_{WA6}, S4 (dB(A))	44	52	58	66	69	68	70	66	75
L_{WA6}, S5 (dB(A))	49	59	66	73	77	75	75	71	82

L_{WA2}= housing sound power level in dB.
 L_{WA5}= free inlet sound power level in dB.
 L_{WA6}= free outlet sound power level in dB.

DPK 22/4 B

Characteristic curve



Dimensioned drawing [mm]

