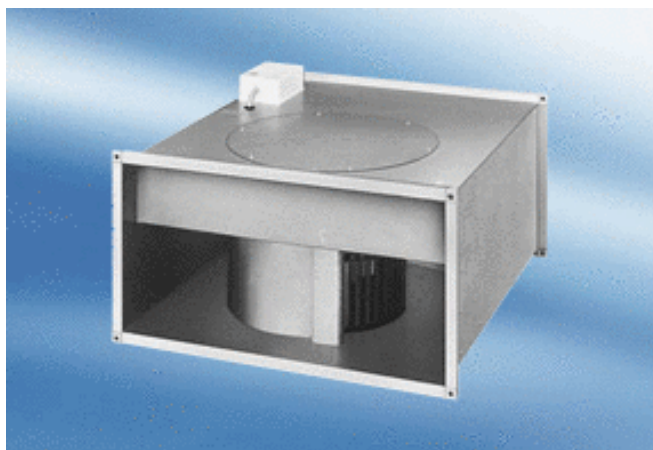


DPK 22/6 A



Short description

Centrifugal channel fans

Article number 0086.0630

Technical data

| | |
|----------------------|-----------|
| Rotating speed | 730 1/min |
| Rated voltage | 400 V |
| Frequency | 50 Hz |
| Power consumption | 160 W |
| I_{max} | 0,32 A |
| Degree of protection | IP 55 |
| Weight | 17 |
| Packing unit | 1 piece |

Sound power level in octave range

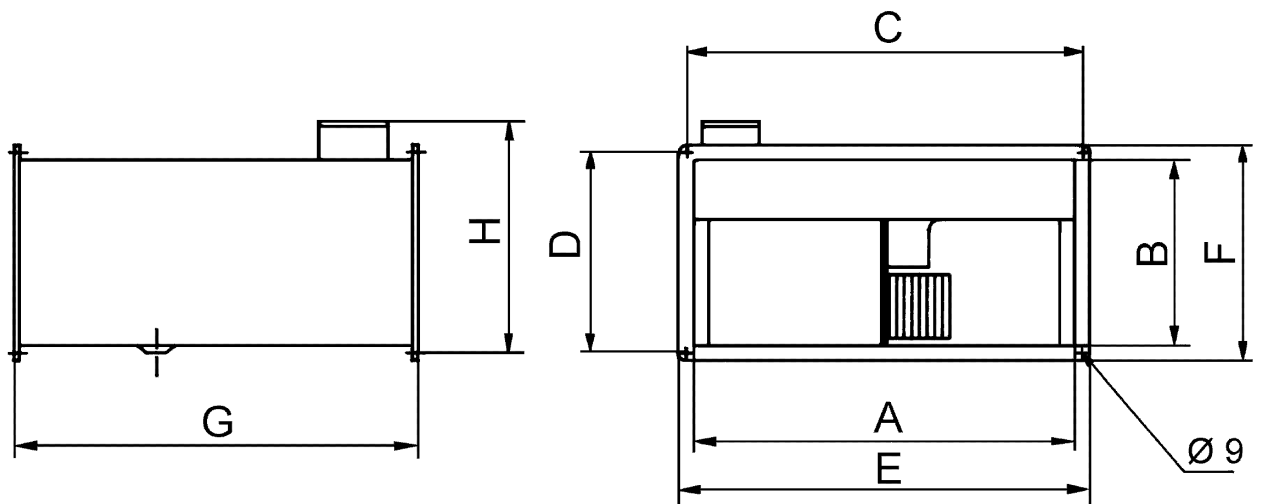
| | 63 Hz | 125 Hz | 250 Hz | 500 Hz | 1 kHz | 2 kHz | 4 kHz | 8 kHz | Total |
|--|-------|--------|--------|--------|-------|-------|-------|-------|-------|
| $L_{WA5, \text{medium}} \text{ (dB(A))}$ | - | - | - | - | - | - | - | - | 63 |
| $L_{WA6, \text{medium}} \text{ (dB(A))}$ | - | - | - | - | - | - | - | - | 66 |

L_{WA5} = free inlet sound power level in dB.

L_{WA6} = free outlet sound power level in dB.

DPK 22/6 A

Dimensioned drawing [mm]



| A | B | C | D | E | F | G | H |
|-----|-----|-----|-----|-----|-----|-----|-----|
| 500 | 250 | 520 | 270 | 540 | 290 | 530 | 322 |