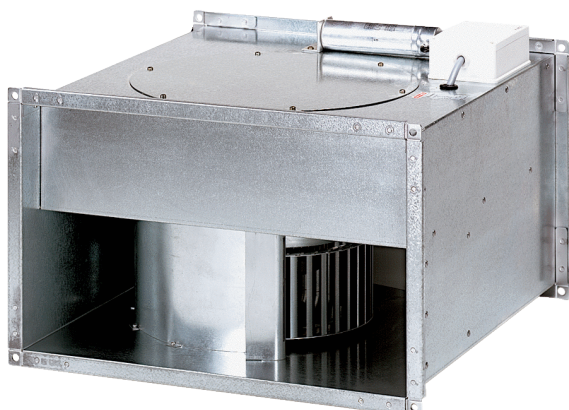


# DPK 25/4 B



## Short description

Centrifugal channel fan, three-phase AC

Article number 0086.0663

## Technical data

Air flow volume	2.920 m <sup>3</sup> /h
Rotating speed	1.474 1/min
Speed controllable	✓
Type of voltage	Three-phase AC
Rated voltage	400 V
Nominal output	410 W (in opt. efficiency)
I <sub>nom</sub>	1,3 A (in opt. efficiency)
I <sub>max</sub>	2,1 A
Degree of protection	IP 55
Insulation class	B
Mains cable	5 x 1,5 mm <sup>2</sup>
Installation position	vertical / horizontal
Weight	24,3 kg
Weight including packaging	26,2 kg
Channel dimension	500 mm x 300 mm
Width	540 mm
Height	340 mm
Depth	560 mm
Width with packaging	545 mm
Height with packaging	330 mm
Depth with packaging	560 mm
Airstream temperature at nominal current	-20 °C up to 60 °C
Airstream temperature at I <sub>Max</sub>	-20 °C up to 60 °C
Packing unit	1 piece
Range	D
GTIN (EAN)	4012799866633

# DPK 25/4 B

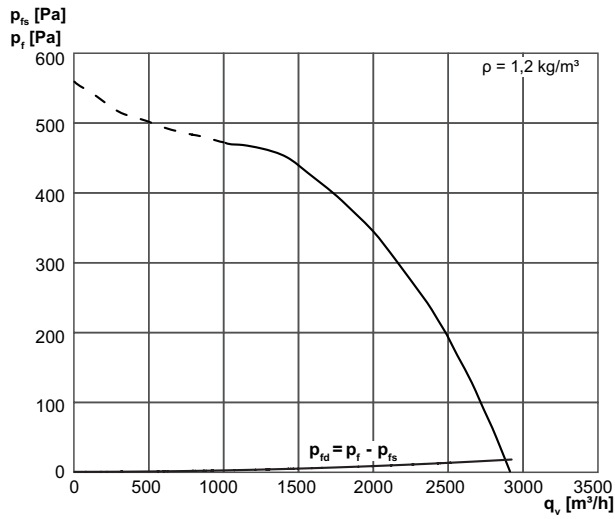
## Sound power level in octave range

	63 Hz	125 Hz	250 Hz	500 Hz	1 kHz	2 kHz	4 kHz	8 kHz	Total
<b>L<sub>WA2</sub>, S1</b> <b>(dB(A))</b>	35	39	43	43	42	39	31	14	49
<b>L<sub>WA2</sub>, S2</b> <b>(dB(A))</b>	43	49	52	53	50	49	44	30	58
<b>L<sub>WA2</sub>, S3</b> <b>(dB(A))</b>	47	54	58	59	59	55	50	40	65
<b>L<sub>WA2</sub>, S4</b> <b>(dB(A))</b>	52	60	62	67	63	61	57	49	71
<b>L<sub>WA2</sub>, S5</b> <b>(dB(A))</b>	55	64	67	67	67	66	62	55	74
<b>L<sub>WA5</sub>, S1</b> <b>(dB(A))</b>	32	45	48	51	51	54	48	34	58
<b>L<sub>WA5</sub>, S2</b> <b>(dB(A))</b>	39	55	56	60	60	63	61	49	68
<b>L<sub>WA5</sub>, S3</b> <b>(dB(A))</b>	44	61	62	65	66	68	67	59	74
<b>L<sub>WA5</sub>, S4</b> <b>(dB(A))</b>	50	67	68	74	73	75	73	68	81
<b>L<sub>WA5</sub>, S5</b> <b>(dB(A))</b>	53	70	72	77	77	80	78	73	85
<b>L<sub>WA6</sub>, S1</b> <b>(dB(A))</b>	34	41	49	56	57	55	52	38	62
<b>L<sub>WA6</sub>, S2</b> <b>(dB(A))</b>	42	52	58	67	67	65	65	55	72
<b>L<sub>WA6</sub>, S3</b> <b>(dB(A))</b>	47	58	64	73	75	73	73	67	80
<b>L<sub>WA6</sub>, S4</b> <b>(dB(A))</b>	51	64	71	78	82	79	79	74	86
<b>L<sub>WA6</sub>, S5</b> <b>(dB(A))</b>	56	68	75	80	86	84	84	79	91

L<sub>WA2</sub>= housing sound power level in dB.  
 L<sub>WA5</sub>= free inlet sound power level in dB.  
 L<sub>WA6</sub>= free outlet sound power level in dB.

# DPK 25/4 B

## Characteristic curve



## Dimensioned drawing [mm]

