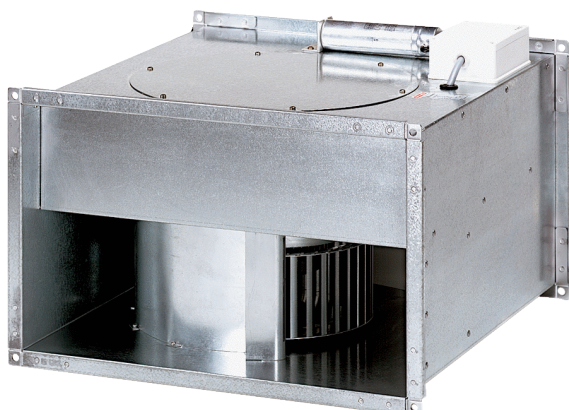


DPK 28/6 B



Short description

Centrifugal channel fan, three-phase AC

Article number 0086.0664

Technical data

Air flow volume	2.400 m ³ /h
Rotating speed	930 1/min
Speed controllable	✓
Type of voltage	Three-phase AC
Rated voltage	400 V
Nominal output	340 W
I _{nom}	1,15 A
I _{max}	1,3 A
Degree of protection	IP 55
Insulation class	B
Mains cable	5 x 1,5 mm ²
Installation position	vertical / horizontal
Weight	31,4 kg
Weight including packaging	32 kg
Channel dimension	600 mm x 300 mm
Width with packaging	700 mm
Height with packaging	420 mm
Depth with packaging	670 mm
Airstream temperature at nominal current	60 °C
Airstream temperature at I _{Max}	60 °C
Packing unit	1 piece
Range	D
GTIN (EAN)	4012799866640

Sound power level in octave range

	63 Hz	125 Hz	250 Hz	500 Hz	1 kHz	2 kHz	4 kHz	8 kHz	Total
L_{WA2, S1} (dB(A))	31	36	39	40	37	33	24	8	45

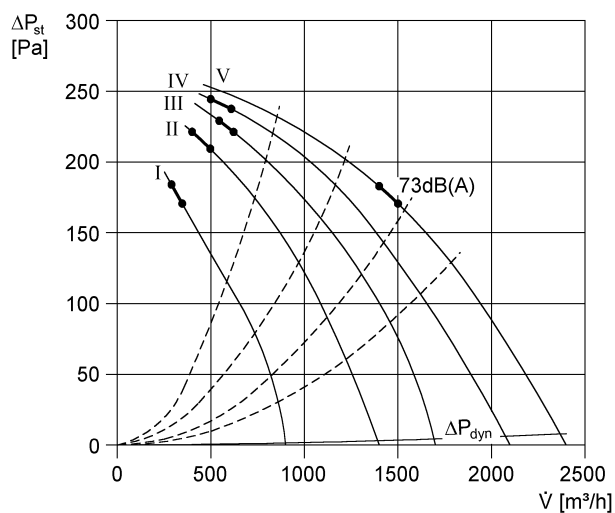
DPK 28/6 B

	63 Hz	125 Hz	250 Hz	500 Hz	1 kHz	2 kHz	4 kHz	8 kHz	Total
L_{WA2}, S2 (dB(A))	40	45	47	48	45	43	37	24	54
L_{WA2}, S3 (dB(A))	44	51	52	54	51	48	43	32	59
L_{WA2}, S4 (dB(A))	48	56	56	57	55	52	48	39	63
L_{WA2}, S5 (dB(A))	51	59	60	60	59	56	52	44	66
L_{WA5}, S1 (dB(A))	29	41	45	48	48	49	41	27	54
L_{WA5}, S2 (dB(A))	37	51	53	57	56	58	55	42	63
L_{WA5}, S3 (dB(A))	42	57	57	63	62	63	61	51	69
L_{WA5}, S4 (dB(A))	45	62	60	67	66	68	66	58	73
L_{WA5}, S5 (dB(A))	48	65	64	69	70	71	70	63	77
L_{WA6}, S1 (dB(A))	30	40	45	54	55	54	54	50	61
L_{WA6}, S2 (dB(A))	45	52	56	65	68	68	70	67	75
L_{WA6}, S3 (dB(A))	49	57	60	70	71	70	72	68	78
L_{WA6}, S4 (dB(A))	50	61	63	73	76	75	76	73	82
L_{WA6}, S5 (dB(A))	57	66	69	76	80	78	80	77	86

L_{WA2}= housing sound power level in dB.
 L_{WA5}= free inlet sound power level in dB.
 L_{WA6}= free outlet sound power level in dB.

DPK 28/6 B

Characteristic curve



Dimensioned drawing [mm]

