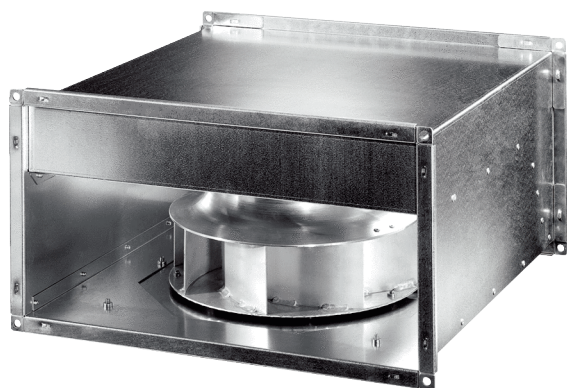


# DPK 31/1-S EC



## Short description

Centrifugal channel fan, with EC motor, three-phase AC, channel size 600 mm x 350 mm, air volume 4,750 m<sup>3</sup>/h

## Application examples

Commercial premises, Workplace, Showroom, Production facility, Industrial building

Article number 0086.0812

## Technical data

Air flow volume	4.750 m <sup>3</sup> /h
Air volume <sub>nom</sub>	2.887 m <sup>3</sup> /h (in opt. efficiency)
Pressure p <sub>fs, nom</sub>	496 Pa (in opt. efficiency)
Rotating speed n <sub>nom</sub>	1.700 1/min (in opt. efficiency)
Rotating speed	1.700 1/min
Speed controllable	✓
Rated voltage	380 V to 480 V
Frequency	50 Hz/60 Hz
Nominal output	760 W
I <sub>nom</sub>	1,42 A
Degree of protection	IP 54
Insulation class	F
Installation site	Channel
Installation position	any
Housing material	Sheet steel, galvanised
Weight	37,45 kg
Weight including packaging	42 kg
Swivelling fan	✓
Channel dimension	600 mm x 350 mm
Width	641 mm
Height	392 mm
Depth	700 mm
Width with packaging	642 mm
Height with packaging	477 mm
Depth with packaging	702 mm
Airstream temperature	-20 °C up to 50 °C
Packing unit	1 piece
Range	E
GTIN (EAN)	4012799868125

# DPK 31/1-S EC

## Sound power level in octave range

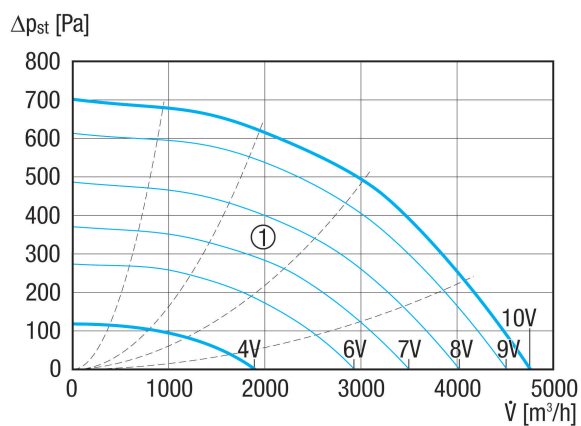
	63 Hz	125 Hz	250 Hz	500 Hz	1 kHz	2 kHz	4 kHz	8 kHz	Total
<b>L<sub>WA2</sub>, S5 (dB(A))</b>	–	64	65	57	55	50	47	40	68
<b>L<sub>WA5</sub>, S5 (dB(A))</b>	–	70	72	66	68	69	65	57	77
<b>L<sub>WA6</sub>, S5 (dB(A))</b>	–	71	73	74	75	74	70	60	81

L<sub>WA2</sub>= housing sound power level in dB.

L<sub>WA5</sub>= free inlet sound power level in dB.

L<sub>WA6</sub>= free outlet sound power level in dB.

## Characteristic curve



Auxiliary characteristics curves for control voltage 1 - 10 V

# DPK 31/1-S EC

Dimensioned drawing [mm]

