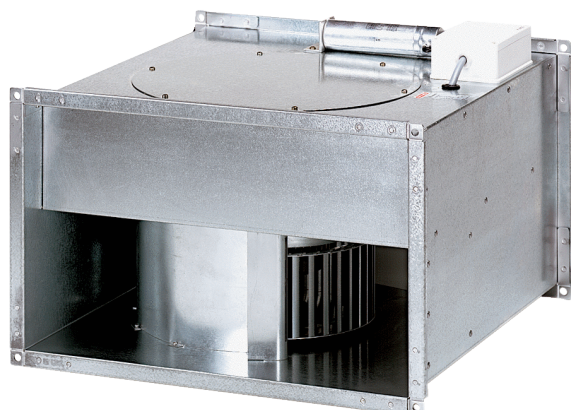


# DPK 35/4 B



## Short description

Centrifugal duct fan, three-phase AC

Article number 0086.0669

## Technical data

Air flow volume	6.895 m <sup>3</sup> /h (Required Delta p <sub>fs</sub> min = 300 Pa)
Air volume <sub>nom</sub>	2.590 m <sup>3</sup> /h (in opt. efficiency)
Pressure p <sub>fs, nom</sub>	910 Pa (in opt. efficiency)
Rotating speed n <sub>nom</sub>	1.400 1/min (in opt. efficiency)
Speed controllable	–
Type of voltage	Three-phase AC
Rated voltage	400 V
Nominal output	1.490 W (in opt. efficiency)
I <sub>nom</sub>	2,8 A (in opt. efficiency)
I <sub>max</sub>	7,5 A
Degree of protection	IP 55
Insulation class	F
Mains cable	5 x 1,5 mm <sup>2</sup>
Installation position	vertical / horizontal
Weight	59 kg
Weight including packaging	63,072 kg
Channel dimension	700 mm x 400 mm
Width with packaging	865 mm
Height with packaging	500 mm
Depth with packaging	805 mm
Airstream temperature at nominal current	-20 °C up to 50 °C
Airstream temperature at I <sub>Max</sub>	-20 °C up to 50 °C
Packing unit	1 piece
Range	D
GTIN (EAN)	4012799866695

## Technical data according to ErP in Best Efficiency Point (BEP)

Total efficiency $\eta$	44,2 %
-------------------------	--------

# DPK 35/4 B

Measurement category	D
Efficiency category	total
Efficiency level N	49,5
VSD necessary	No
Year of manufacture	see rating plate
Manufacturer's name / official registration number / manufacturer's place of establishment	Maico Elektroapparate-Fabrik GmbH / Freiburg registration court, HRB 601233 / Villingen-Schwenningen
Art. No.	0086.0669
$P_{BEP}$ / Air volume $_{BEP}$ / $P_{fs, BEP}$	1,49 kW / 2.590 m <sup>3</sup> /h
$n_{BEP}$	1.400 1/min
Specific ratio	≈ 1
Information about dismantling and disposal	see mounting instructions
Information about installation, operation and repairs	see mounting instructions
Objects used to measure efficiency which are not described by the measurement category	-
$P_f, BEP$	916 Pa

## Sound power level in octave range

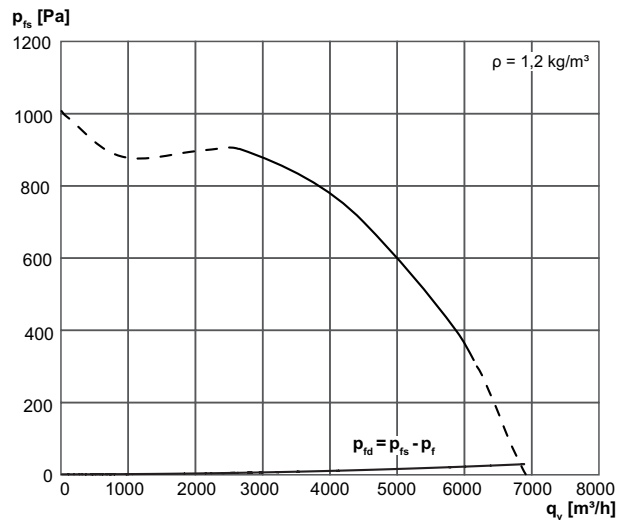
	63 Hz	125 Hz	250 Hz	500 Hz	1 kHz	2 kHz	4 kHz	8 kHz	Total
<b>L<sub>WA2, S1</sub></b> <b>(dB(A))</b>	45	50	54	55	52	47	41	31	60
<b>L<sub>WA2, S2</sub></b> <b>(dB(A))</b>	53	59	62	65	62	58	52	46	69
<b>L<sub>WA2, S3</sub></b> <b>(dB(A))</b>	58	64	67	76	69	65	59	54	78
<b>L<sub>WA2, S4</sub></b> <b>(dB(A))</b>	61	68	71	75	77	71	65	61	81
<b>L<sub>WA2, S5</sub></b> <b>(dB(A))</b>	63	71	75	76	89	76	70	65	89
<b>L<sub>WA5, S1</sub></b> <b>(dB(A))</b>	44	58	61	64	64	64	61	50	70
<b>L<sub>WA5, S2</sub></b> <b>(dB(A))</b>	53	67	68	73	75	74	72	64	80
<b>L<sub>WA5, S3</sub></b> <b>(dB(A))</b>	57	73	73	82	81	81	79	71	87
<b>L<sub>WA5, S4</sub></b> <b>(dB(A))</b>	61	77	78	84	87	87	85	78	92
<b>L<sub>WA5, S5</sub></b> <b>(dB(A))</b>	64	80	82	86	96	92	89	83	98
<b>L<sub>WA6, S1</sub></b> <b>(dB(A))</b>	46	57	63	69	71	71	72	68	77
<b>L<sub>WA6, S2</sub></b> <b>(dB(A))</b>	57	67	71	79	82	81	82	78	88

# DPK 35/4 B

	63 Hz	125 Hz	250 Hz	500 Hz	1 kHz	2 kHz	4 kHz	8 kHz	Total
<b>L<sub>WA6, S3</sub></b> <b>(dB(A))</b>	60	71	75	84	87	86	86	83	92
<b>L<sub>WA6, S4</sub></b> <b>(dB(A))</b>	68	78	82	89	93	93	93	89	99
<b>L<sub>WA6, S5</sub></b> <b>(dB(A))</b>	72	80	85	92	101	97	97	93	104

L<sub>WA2</sub>= housing sound power level in dB.  
 L<sub>WA5</sub>= free inlet sound power level in dB.  
 L<sub>WA6</sub>= free outlet sound power level in dB.

## Characteristic curve



# DPK 35/4 B

Dimensioned drawing [mm]

