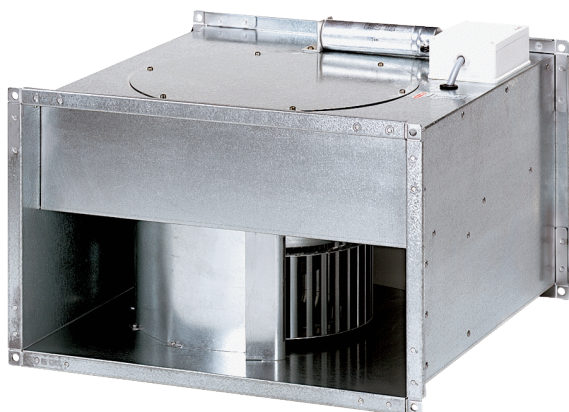


DPK 35/6 B



Short description

Centrifugal channel fan, three-phase AC

Article number 0086.0668

Technical data

Air flow volume	5.500 m ³ /h
Rotating speed	930 1/min
Speed controllable	✓
Type of voltage	Three-phase AC
Rated voltage	400 V
Nominal output	1.100 W
I _{nom}	3 A
I _{max}	4,6 A
Degree of protection	IP 55
Insulation class	F
Mains cable	5 x 1,5 mm ²
Installation position	vertical / horizontal
Weight	63,2 kg
Weight including packaging	63 kg
Channel dimension	700 mm x 400 mm
Width	740 mm
Height	440 mm
Depth	780 mm
Width with packaging	870 mm
Height with packaging	500 mm
Depth with packaging	800 mm
Airstream temperature at nominal current	60 °C
Airstream temperature at I _{Max}	60 °C
Packing unit	1 piece
Range	D
GTIN (EAN)	4012799866688

DPK 35/6 B

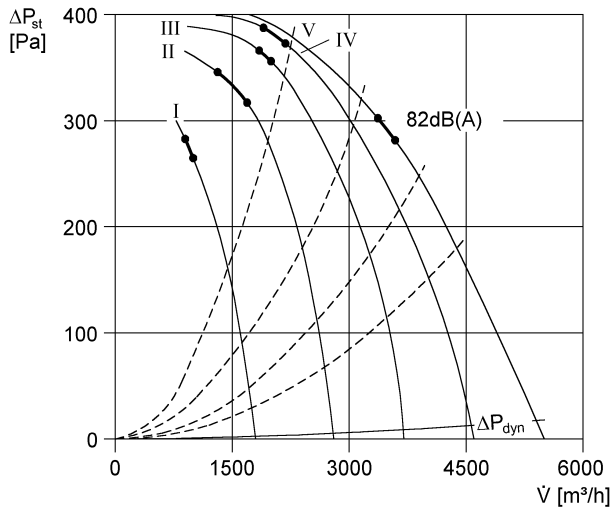
Sound power level in octave range

	63 Hz	125 Hz	250 Hz	500 Hz	1 kHz	2 kHz	4 kHz	8 kHz	Total
L_{WA2}, S1 (dB(A))	37	46	59	47	44	378	30	17	59
L_{WA2}, S2 (dB(A))	46	50	62	60	55	48	43	33	65
L_{WA2}, S3 (dB(A))	51	56	67	75	62	56	51	43	76
L_{WA2}, S4 (dB(A))	55	61	61	73	66	61	55	50	74
L_{WA2}, S5 (dB(A))	58	65	64	72	68	65	60	56	75
L_{WA5}, S1 (dB(A))	36	52	58	53	54	55	50	35	62
L_{WA5}, S2 (dB(A))	45	60	72	65	66	65	62	51	75
L_{WA5}, S3 (dB(A))	50	66	70	79	72	71	69	61	81
L_{WA5}, S4 (dB(A))	55	71	68	76	77	77	75	68	83
L_{WA5}, S5 (dB(A))	57	74	72	77	80	81	79	73	86
L_{WA6}, S1 (dB(A))	45	51	61	60	67	68	70	67	75
L_{WA6}, S2 (dB(A))	53	61	67	71	76	76	78	78	83
L_{WA6}, S3 (dB(A))	59	67	72	78	79	79	80	77	86
L_{WA6}, S4 (dB(A))	64	73	77	83	85	85	86	82	92
L_{WA6}, S5 (dB(A))	68	77	80	85	89	89	89	86	95

L_{WA2}= housing sound power level in dB.
 L_{WA5}= free inlet sound power level in dB.
 L_{WA6}= free outlet sound power level in dB.

DPK 35/6 B

Characteristic curve



Dimensioned drawing [mm]

