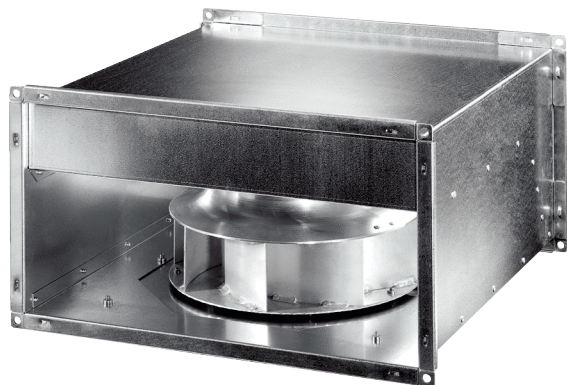


DPK 50 EC



Short description

Centrifugal duct fan, with EC motor, three-phase AC, channel size 800 mm x 500 mm

Application examples

Commercial premises, Workplace, Showroom, Production facility, Industrial building

Article number 0086.0808

Technical data

Air flow volume	9.590 m ³ /h
Air volume _{nom}	5.185 m ³ /h (in opt. efficiency)
Pressure p _{fs, nom}	711 Pa (in opt. efficiency)
Rotating speed n _{nom}	1.580 1/min (in opt. efficiency)
Rotating speed	1.580 1/min
Speed controllable	✓
Rated voltage	400 V
Frequency	50 Hz/60 Hz
Nominal output	1.830 W
I _{nom}	2,88 A
Degree of protection	IP 54
Insulation class	F
Installation site	Channel
Installation position	any
Housing material	Sheet steel, galvanised
Weight	65 kg
Weight including packaging	65,53 kg
Swivelling fan	✓
Channel dimension	800 mm x 500 mm
Width	840 mm
Height	540 mm
Depth	880 mm
Width with packaging	847 mm
Height with packaging	632 mm
Depth with packaging	882 mm
Airstream temperature	-20 °C up to 50 °C
Packing unit	1 piece
Range	E
GTIN (EAN)	4012799868088

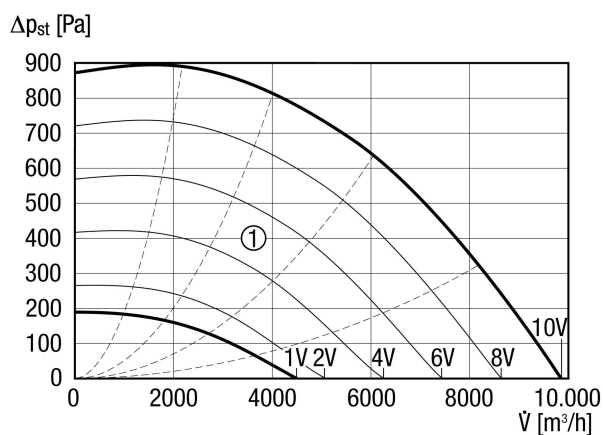
DPK 50 EC

Sound power level in octave range

	63 Hz	125 Hz	250 Hz	500 Hz	1 kHz	2 kHz	4 kHz	8 kHz	Total
L_{WA2}, S5 (dB(A))	–	61	68	64	63	60	54	46	71
L_{WA5}, S5 (dB(A))	–	62	73	77	76	75	69	60	82
L_{WA6}, S5 (dB(A))	–	70	80	82	85	82	76	66	89

L_{WA2}= housing sound power level in dB.
 L_{WA5}= free inlet sound power level in dB.
 L_{WA6}= free outlet sound power level in dB.

Characteristic curve



Auxiliary characteristics curves for control voltage 1 - 10 V

DPK 50 EC

Dimensioned drawing [mm]

