

# DRD 50/6



## Short description

Radial roof fan, with vertical air outlet, DN 500, three-phase AC

Article number 0087.0113

## Technical data

Air flow volume	8.300 m <sup>3</sup> /h
Rotating speed	930 1/min
Nominal output	1.260 W
I <sub>nom</sub>	2,6 A
I <sub>max</sub>	3,3 A
Pole-changeable	–
Installation site	Roof
Installation position	vertical
Material	Sheet steel, galvanised
Weight	124
Airstream temperature at nominal current	60 °C
Packing unit	1 piece
Range	C
GTIN (EAN)	4012799871132

## Sound power level in octave range

	63 Hz	125 Hz	250 Hz	500 Hz	1 kHz	2 kHz	4 kHz	8 kHz	Total
L <sub>WA5, S1</sub> (dB(A))	44	45	50	61	58	61	41	27	65
L <sub>WA5, S2</sub> (dB(A))	55	57	60	65	64	67	63	46	72
L <sub>WA5, S3</sub> (dB(A))	55	57	60	65	64	67	63	46	72
L <sub>WA5, S4</sub> (dB(A))	58	74	73	71	79	74	74	62	83
L <sub>WA5, S5</sub> (dB(A))	59	76	75	74	76	75	77	67	83

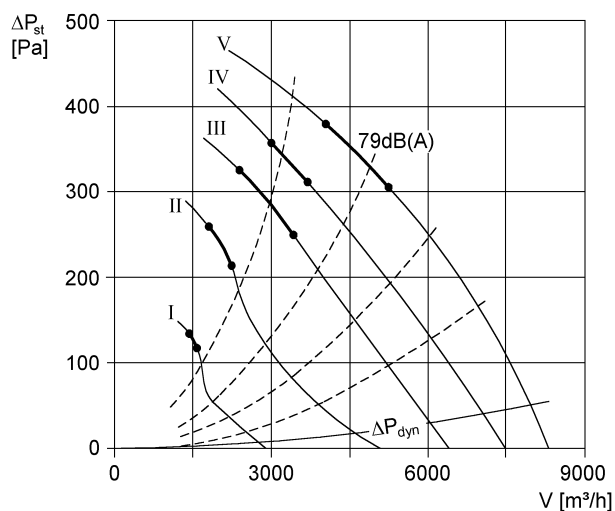
# DRD 50/6

	63 Hz	125 Hz	250 Hz	500 Hz	1 kHz	2 kHz	4 kHz	8 kHz	Total
<b>L<sub>WA8, S1</sub></b> <b>(dB(A))</b>	46	48	54	63	59	58	39	26	66
<b>L<sub>WA8, S2</sub></b> <b>(dB(A))</b>	56	59	63	69	67	66	60	43	73
<b>L<sub>WA8, S3</sub></b> <b>(dB(A))</b>	58	69	70	81	75	71	69	64	83
<b>L<sub>WA8, S4</sub></b> <b>(dB(A))</b>	60	71	74	77	82	74	72	63	85
<b>L<sub>WA8, S5</sub></b> <b>(dB(A))</b>	61	73	77	80	79	77	76	71	86

L<sub>WA5</sub>= free inlet sound power level in dB.

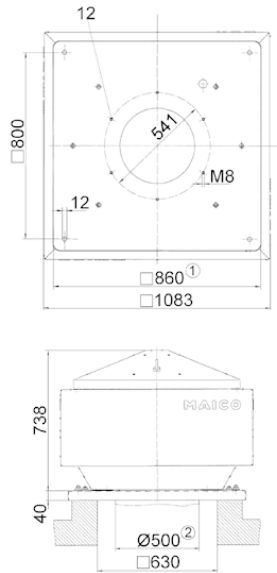
L<sub>WA8</sub>= housing and free outlet sound power level in dB.

## Characteristic curve



# DRD 50/6

Dimensioned drawing [mm]



- ① Clear width
- ② External duct diameter