

DRD 50/86



Short description

Radial roof fan, with vertical air outlet, DN 500, three-phase AC, pole changeable

Article number 0087.0157

Technical data

Air flow volume	6.300 m ³ /h / 8.500 m ³ /h
Rotating speed	715 1/min / 930 1/min
Nominal output	650 W / 1.450 W
I _{nom}	1,4 A / 2,9 A
I _{max}	1,4 A / 2,9 A
Pole-changeable	✓
Number of poles at high speed	6
Number of poles at low speed	8
Installation site	Roof
Installation position	vertical
Material	Sheet steel, galvanised
Weight	134
Airstream temperature at nominal current	60 °C
Packing unit	1 piece
Range	C
GTIN (EAN)	4012799871576

Sound power level in octave range

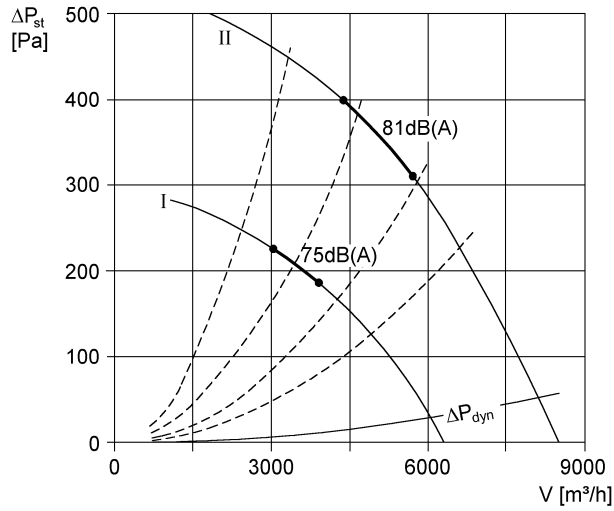
	63 Hz	125 Hz	250 Hz	500 Hz	1 kHz	2 kHz	4 kHz	8 kHz	Total
L _{WA5, low} (dB(A))	56	71	70	69	71	73	71	57	79
L _{WA5, high} (dB(A))	58	77	77	76	77	78	79	69	85
L _{WA8, low} (dB(A))	58	70	70	75	74	73	70	64	81
L _{WA8, high} (dB(A))	62	75	78	82	81	78	76	66	87

DRD 50/86

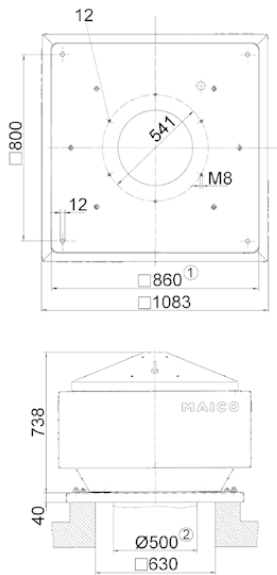
L_{WA5} = free inlet sound power level in dB.

L_{WA8} = housing and free outlet sound power level in dB.

Characteristic curve



Dimensioned drawing [mm]



- ① Clear width
- ② External duct diameter