

DRD 50/8



Short description

Radial roof fan, with vertical air outlet, DN 500, three-phase AC

Article number 0087.0116

Technical data

Air flow volume	6.300 m ³ /h
Rotating speed	715 1/min
Nominal output	640 W
I _{nom}	1,5 A
I _{max}	1,7 A
Pole-changeable	–
Installation site	Roof
Installation position	vertical
Material	Sheet steel, galvanised
Weight	124
Airstream temperature at nominal current	60 °C
Packing unit	1 piece
Range	C
GTIN (EAN)	4012799871163

Sound power level in octave range

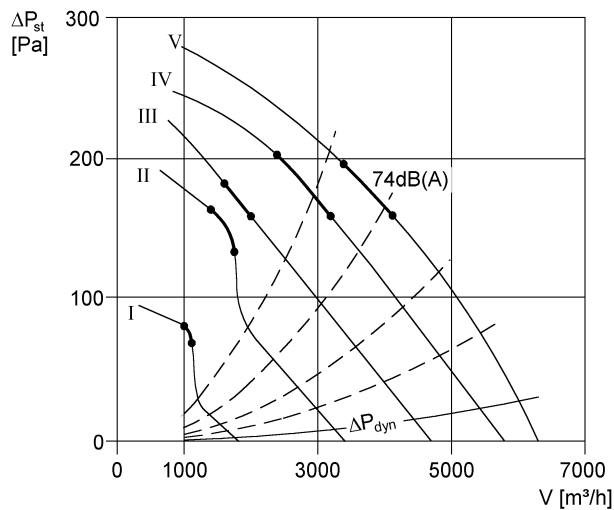
	63 Hz	125 Hz	250 Hz	500 Hz	1 kHz	2 kHz	4 kHz	8 kHz	Total
L _{WA5, S1} (dB(A))	30	35	42	47	59	45	35	22	60
L _{WA5, S2} (dB(A))	50	49	52	54	61	65	48	35	67
L _{WA5, S3} (dB(A))	54	56	59	60	63	69	64	46	72
L _{WA5, S4} (dB(A))	57	61	64	63	66	70	70	52	75
L _{WA5, S5} (dB(A))	55	69	69	66	68	71	72	55	78

DRD 50/8

	63 Hz	125 Hz	250 Hz	500 Hz	1 kHz	2 kHz	4 kHz	8 kHz	Total
L_{WA8, S1} (dB(A))	33	39	45	52	58	44	35	25	59
L_{WA8, S2} (dB(A))	50	51	56	60	61	64	48	40	67
L_{WA8, S3} (dB(A))	56	58	61	66	65	67	62	52	72
L_{WA8, S4} (dB(A))	58	63	66	70	69	69	68	61	76
L_{WA8, S5} (dB(A))	58	69	69	72	71	70	69	53	78

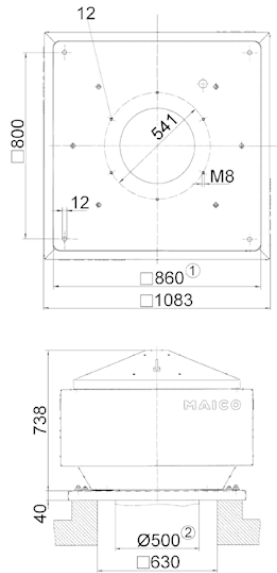
L_{WA5}= free inlet sound power level in dB.
 L_{WA8}= housing and free outlet sound power level in dB.

Characteristic curve



DRD 50/8

Dimensioned drawing [mm]



- ① Clear width
- ② External duct diameter