

DZR 60/6 B Ex e



Short description

Axial duct fan, DN600, three-phase AC, explosion-proof, medium: gas

Application examples

Environment with explosion hazard (zone 1 and 2), Workshop, Storage facility, Laboratory, Workplace air extraction system

Article number 0086.0715

Technical data

Air flow volume	9.370 m ³ /h
Rotating speed	960 1/min
Impeller type	axial
Speed controllable	✓
Reversing capacity	✓
Type of voltage	Three-phase AC
Rated voltage	400 V
Frequency	50 Hz
Nominal output	295 W
cosφ	0,65
I _{nom}	0,66 A
I _{max} at U _{Nominal}	1,25 A
Degree of protection	IP 64
Insulation class	F
Installation position	vertical / horizontal
Material	Sheet steel, galvanised
Housing material	Sheet steel, galvanised
Colour	galvanised
Weight	30,12 kg
Weight including packaging	34,48 kg
Nominal size	600 mm
Width	745 mm
Height	745 mm
Depth	400 mm
Width with packaging	770 mm
Height with packaging	790 mm
Depth with packaging	435 mm
EX designation in accordance with the ATEX Directive	Ex II 2 G
EX designation in accordance with standard	Ex eb IIB + H ₂ T3 Gb / Ex h IIB + H ₂ T3 Gb

DZR 60/6 B Ex e

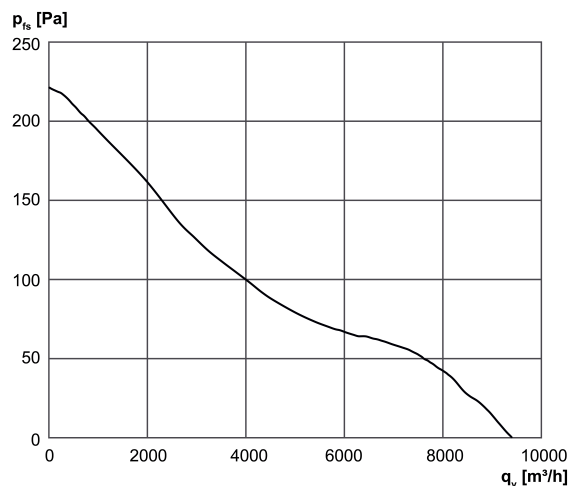
Ta ambient temperature	-20 °C ≤ Ta ≤ +60 °C
I _A /I _N	4,5
Time t _A	290 sek
Operating mode	S1
PTC DIN 44082	M 130
EC type examination certificate	TÜV-A 19 ATEX0103 X, IECEx EPS 19.0019X
Temperature class	T3
Temperature class of insulating materials Th. Cl.	155 (F)
Packing unit	1 piece
Range	C
GTIN (EAN)	4012799867159

Sound power level in octave range

	63 Hz	125 Hz	250 Hz	500 Hz	1 kHz	2 kHz	4 kHz	8 kHz	Total
L _{WA5, high} (dB(A))	-	-	-	-	-	-	-	-	77

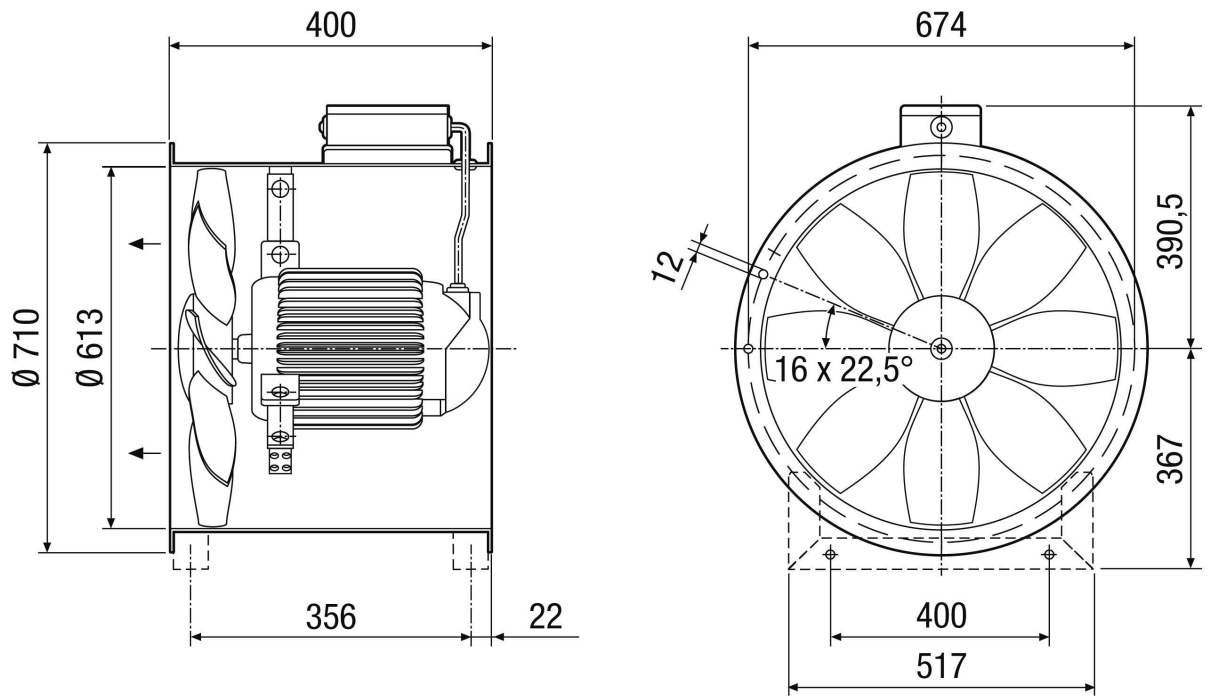
L_{WA5}= free inlet sound power level in dB.

Characteristic curve



DZR 60/6 B Ex e

Dimensioned drawing [mm]



Number of flange holes: 16