

DZS 50/6 B



Short description

Axial wall fan with steel wall ring, DN 500, three-phase AC

Application examples

Production facility, Commercial premises, Garage, Building container, Storage facility

Article number 0094.0027

Technical data

Model	Steel wall ring
Air flow volume	5.880 m ³ /h
Air volume _{nom}	4.350 m ³ /h (in opt. efficiency)
Pressure p _{fs, nom}	60 Pa (in opt. efficiency)
Rotating speed n _{nom}	950 1/min (in opt. efficiency)
Rotating speed	968 1/min
Impeller type	axial
Speed controllable	✓
Reversing capacity	✓
Type of voltage	Three-phase AC
Rated voltage	400 V
Frequency	50 Hz
Nominal output	240 W (in opt. efficiency)
I _{nom}	0,7 A (in opt. efficiency)
I _{max}	0,8 A
Degree of protection	IP 55
Insulation class	F
Pole-changeable	–
Mains cable	7 x 1,5 mm ²
Installation site	Wall / Ceiling
Type of installation	Surface-mounted
Installation position	horizontal / vertical
Material	Sheet steel, galvanised
Colour	Silver
Weight	13,98 kg
Weight including packaging	17,52 kg
Nominal size	500 mm
Width	700 mm
Height	700 mm

DZS 50/6 B

Depth	330 mm
Width with packaging	730 mm
Height with packaging	730 mm
Depth with packaging	400 mm
Airstream temperature at nominal current	60 °C
Airstream temperature at I_{Max}	-20 °C up to 60 °C
Packing unit	1 piece
Range	C
GTIN (EAN)	4012799940272

Technical data according to ErP in Best Efficiency Point (BEP)

Total efficiency η	30,2 %
Measurement category	A
Efficiency category	static
Efficiency level N	40,4
VSD necessary	No
Year of manufacture	see rating plate
Manufacturer's name / official registration number / manufacturer's place of establishment	Maico Elektroapparate-Fabrik GmbH / Freiburg registration court, HRB 601233 / Villingen-Schwenningen
Art. No.	0094.0027
P_{BEP} / Air volume $_{BEP}$ / $P_{fs, BEP}$	0,24 kW / 4.350 m ³ /h / 60 Pa
n_{BEP}	950 1/min
Specific ratio	≈ 1
Information about dismantling and disposal	see mounting instructions
Information about installation, operation and repairs	see mounting instructions
Objects used to measure efficiency which are not described by the measurement category	-
Sound power level $_{L_{WA7}}$	73 dB(A)

Sound power level in octave range

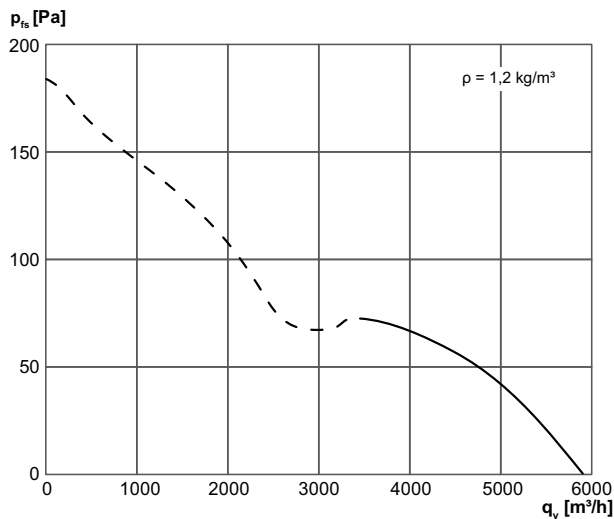
	63 Hz	125 Hz	250 Hz	500 Hz	1 kHz	2 kHz	4 kHz	8 kHz	Total
$L_{WA7, S1}$ (dB(A))	-	-	-	-	-	-	-	-	54
$L_{WA7, S2}$ (dB(A))	-	-	-	-	-	-	-	-	63
$L_{WA7, S3}$ (dB(A))	-	-	-	-	-	-	-	-	68
$L_{WA7, S4}$ (dB(A))	-	-	-	-	-	-	-	-	71
$L_{WA7, S5}$ (dB(A))	34	53	57	63	68	68	63	52	73

DZS 50/6 B

	63 Hz	125 Hz	250 Hz	500 Hz	1 kHz	2 kHz	4 kHz	8 kHz	Total
$L_{WA8, S1}$ (dB(A))	-	-	-	-	-	-	-	-	65
$L_{WA8, S2}$ (dB(A))	-	-	-	-	-	-	-	-	74
$L_{WA8, S3}$ (dB(A))	-	-	-	-	-	-	-	-	76
$L_{WA8, S4}$ (dB(A))	-	-	-	-	-	-	-	-	77
$L_{WA8, S5}$ (dB(A))	52	59	61	65	71	72	73	70	78

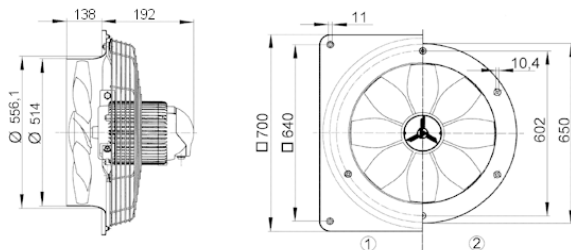
L_{WA7} = housing and free inlet sound power level in dB.
 L_{WA8} = housing and free outlet sound power level in dB.

Characteristic curve



Dimensioned drawing [mm]

- ① Steel wall plate = EZQ/DZQ model
- ② Steel wall ring = EZS/DZS model



DZS 50/6 B

