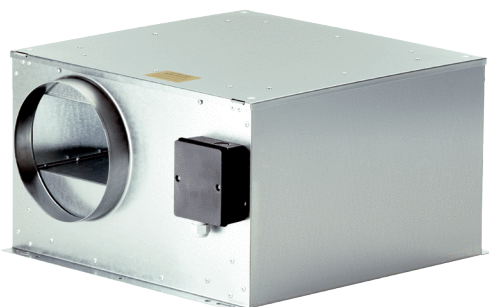


ECR-A 25/31



Short description

Sound-insulated ventilation box fan suitable for ECR 25 compact box

Application examples

Day room, Foreman's office, Laboratory, Workshop, Storage facility

Article number 0080.0568

Technical data

Air flow volume	1.100 m ³ /h
Rotating speed	2.590 1/min
Speed controllable	–
Type of voltage	Alternating current
Rated voltage	230 V
Nominal output	196 W
I _{nom}	0,9 A
I _{max}	0,9 A
Degree of protection	IP 44
Housing material	Sheet steel, galvanised
Weight	17,8 kg
Weight including packaging	19,55 kg
Swivelling fan	✓
Nominal size	250 mm
Width with packaging	635 mm
Height with packaging	315 mm
Depth with packaging	495 mm
Airstream temperature at nominal current	40 °C
Airstream temperature at I _{Max}	-20 °C up to 40 °C
Ambient temperature	40 °C
Packing unit	1 piece
Range	C
GTIN (EAN)	4012799805687

Sound power level in octave range

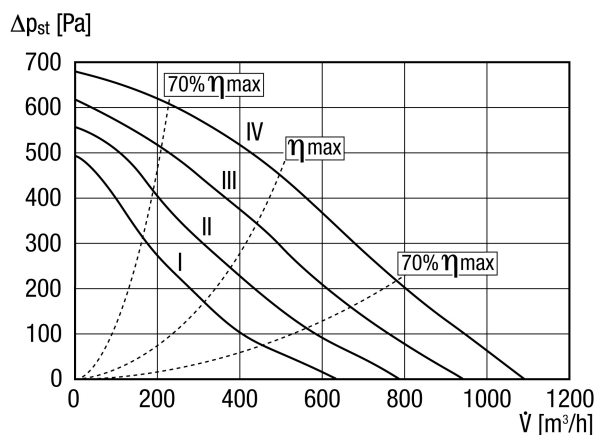
	63 Hz	125 Hz	250 Hz	500 Hz	1 kHz	2 kHz	4 kHz	8 kHz	Total
L_{WA5, S5} (dB(A))	–	47	56	47	46	48	43	36	58

ECR-A 25/31

	63 Hz	125 Hz	250 Hz	500 Hz	1 kHz	2 kHz	4 kHz	8 kHz	Total
$L_{WA6, S5}$ (dB(A))	-	57	65	73	69	70	62	57	76
$L_{WA2, S5}$ (dB(A))	-	45	47	48	42	32	30	24	52

L_{WA2} = housing sound power level in dB.
 L_{WA5} = free inlet sound power level in dB.
 L_{WA6} = free outlet sound power level in dB.

Characteristic curve



ECR-A 25/31

Dimensioned drawing [mm]

