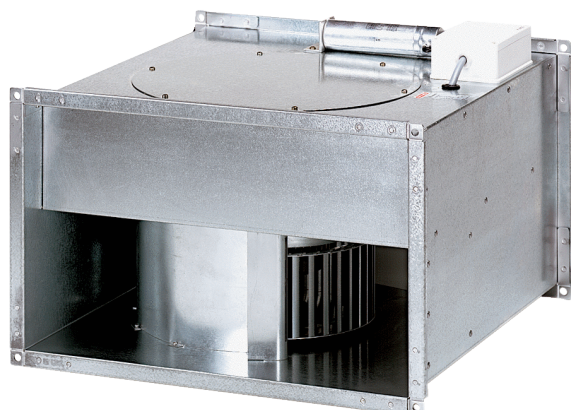


EPK 22/4 B



Short description

Centrifugal channel fan, single-phase AC

Article number 0086.0651

Technical data

Air flow volume	1.320 m ³ /h
Speed controllable	✓
Type of voltage	Alternating current
Rated voltage	230 V
I _{max}	2 A
Degree of protection	IP 55
Insulation class	F
Mains cable	3 x 1,5 mm ²
Installation position	vertical / horizontal
Weight	17,5 kg
Weight including packaging	19,3 kg
Channel dimension	500 mm x 250 mm
Width with packaging	550 mm
Height with packaging	365 mm
Depth with packaging	550 mm
Airstream temperature at nominal current	-20 °C up to 50 °C
Airstream temperature at I _{Max}	-20 °C up to 50 °C
Packing unit	1 piece
Range	D
GTIN (EAN)	4012799866510

Sound power level in octave range

	63 Hz	125 Hz	250 Hz	500 Hz	1 kHz	2 kHz	4 kHz	8 kHz	Total
L_{WA2, S1} (dB(A))	19	26	40	28	25	178	8	2	40
L_{WA2, S2} (dB(A))	27	33	44	36	34	30	21	6	46

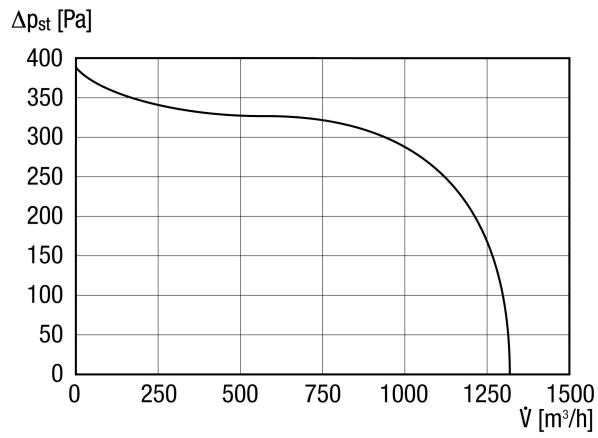
EPK 22/4 B

	63 Hz	125 Hz	250 Hz	500 Hz	1 kHz	2 kHz	4 kHz	8 kHz	Total
L_{WA2}, S3 (dB(A))	33	41	49	44	41	40	33	20	52
L_{WA2}, S4 (dB(A))	378	47	53	49	46	45	43	31	56
L_{WA2}, S5 (dB(A))	43	53	59	55	53	52	50	44	63
L_{WA5}, S1 (dB(A))	15	26	43	33	32	9	21	11	44
L_{WA5}, S2 (dB(A))	23	35	47	41	43	43	36	21	50
L_{WA5}, S3 (dB(A))	30	44	52	49	49	52	48	36	58
L_{WA5}, S4 (dB(A))	35	51	55	55	55	58	56	47	64
L_{WA5}, S5 (dB(A))	41	58	61	62	63	64	64	57	71
L_{WA6}, S1 (dB(A))	18	24	35	38	38	32	22	12	42
L_{WA6}, S2 (dB(A))	26	33	43	48	49	45	41	27	53
L_{WA6}, S3 (dB(A))	33	42	49	57	58	56	56	51	63
L_{WA6}, S4 (dB(A))	39	47	54	62	65	64	65	62	71
L_{WA6}, S5 (dB(A))	46	55	62	69	72	71	73	70	78

L_{WA2}= housing sound power level in dB.
 L_{WA5}= free inlet sound power level in dB.
 L_{WA6}= free outlet sound power level in dB.

EPK 22/4 B

Characteristic curve



Dimensioned drawing [mm]

