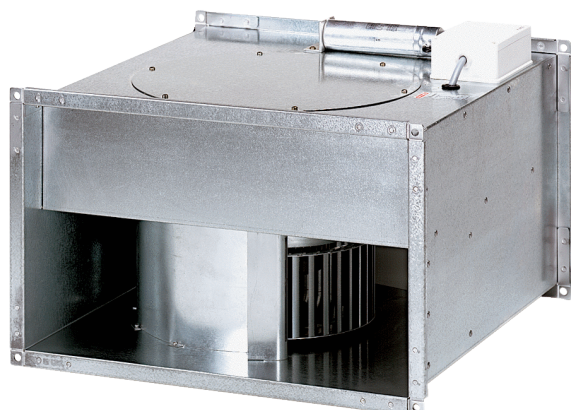


EPK 22/6 B



Short description

Centrifugal channel fan, single-phase AC

Article number 0086.0650

Technical data

Air flow volume	900 m ³ /h
Rotating speed	700 1/min
Speed controllable	✓
Type of voltage	Alternating current
Rated voltage	230 V
Nominal output	160 W
I _{nom}	0,8 A
I _{max}	0,95 A
Degree of protection	IP 55
Insulation class	F
Mains cable	3 x 1,5 mm ²
Installation position	vertical / horizontal
Weight	18,7 kg
Weight including packaging	19 kg
Channel dimension	500 mm x 250 mm
Width with packaging	555 mm
Height with packaging	370 mm
Depth with packaging	555 mm
Airstream temperature at nominal current	60 °C
Airstream temperature at I _{Max}	60 °C
Packing unit	1 piece
Range	D
GTIN (EAN)	4012799866503

Sound power level in octave range

	63 Hz	125 Hz	250 Hz	500 Hz	1 kHz	2 kHz	4 kHz	8 kHz	Total
L_{WA2, S1} (dB(A))	12	16	33	20	12	6	8	9	33

EPK 22/6 B

	63 Hz	125 Hz	250 Hz	500 Hz	1 kHz	2 kHz	4 kHz	8 kHz	Total
L_{WA2}, S2 (dB(A))	20	25	38	29	27	19	22	19	39
L_{WA2}, S3 (dB(A))	27	34	44	37	36	32	31	31	46
L_{WA2}, S4 (dB(A))	32	40	48	42	41	39	40	4	51
L_{WA2}, S5 (dB(A))	37	46	54	48	47	46	13	7	57
L_{WA5}, S1 (dB(A))	9	23	36	24	19	15	21	22	36
L_{WA5}, S2 (dB(A))	16	31	41	33	33	30	36	33	43
L_{WA5}, S3 (dB(A))	23	38	47	42	42	34	45	45	50
L_{WA5}, S4 (dB(A))	28	44	50	48	48	50	55	5	56
L_{WA5}, S5 (dB(A))	34	51	56	55	55	57	10	11	63
L_{WA6}, S1 (dB(A))	14	19	27	28	25	17	25	27	32
L_{WA6}, S2 (dB(A))	19	26	35	38	39	34	41	38	43
L_{WA6}, S3 (dB(A))	27	33	41	47	48	46	50	55	53
L_{WA6}, S4 (dB(A))	29	38	46	53	54	52	61	–	59
L_{WA6}, S5 (dB(A))	36	46	53	61	62	61	–	–	68

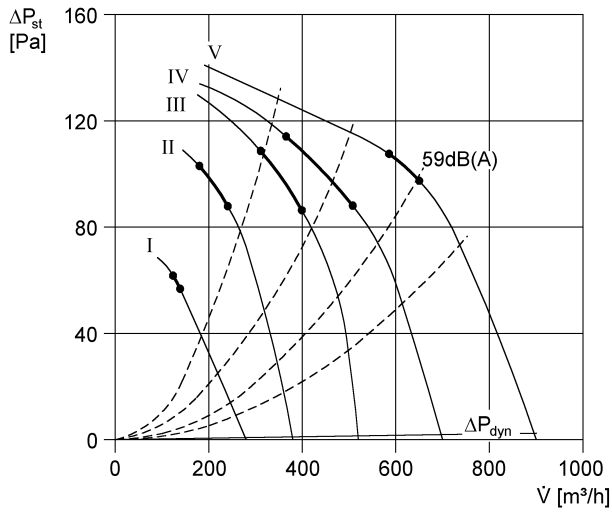
L_{WA2}= housing sound power level in dB.

L_{WA5}= free inlet sound power level in dB.

L_{WA6}= free outlet sound power level in dB.

EPK 22/6 B

Characteristic curve



Dimensioned drawing [mm]

