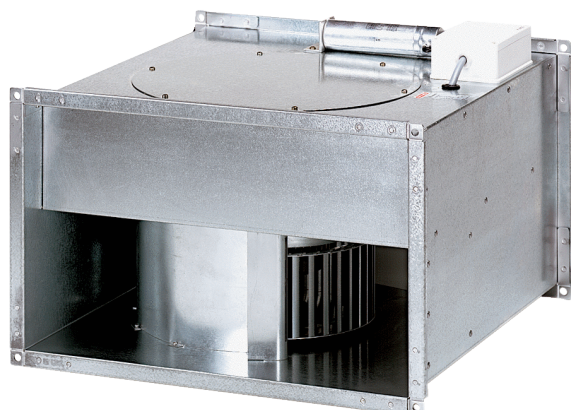


EPK 25/4 B



Short description

Centrifugal channel fan, single-phase AC

Article number 0086.0653

Technical data

Air flow volume	2.850 m ³ /h
Speed controllable	✓
Type of voltage	Alternating current
Rated voltage	400 V
I _{max}	5,2 A
Degree of protection	IP 55
Insulation class	F
Mains cable	3 x 1,5 mm ²
Installation position	vertical / horizontal
Weight	24,8 kg
Weight including packaging	26,8 kg
Channel dimension	500 mm x 300 mm
Width with packaging	580 mm
Height with packaging	415 mm
Depth with packaging	560 mm
Airstream temperature at nominal current	-20 °C up to 60 °C
Airstream temperature at I _{Max}	-20 °C up to 60 °C
Packing unit	1 piece
Range	D
GTIN (EAN)	4012799866534

Sound power level in octave range

	63 Hz	125 Hz	250 Hz	500 Hz	1 kHz	2 kHz	4 kHz	8 kHz	Total
L _{WA2, S1} (dB(A))	25	40	41	38	34	27	15	1	45
L _{WA2, S2} (dB(A))	35	45	52	54	47	40	32	15	57

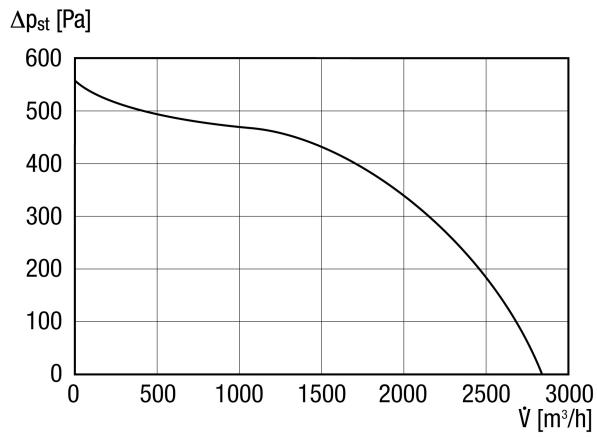
EPK 25/4 B

	63 Hz	125 Hz	250 Hz	500 Hz	1 kHz	2 kHz	4 kHz	8 kHz	Total
L_{WA2}, S3 (dB(A))	43	53	60	71	63	54	49	40	72
L_{WA2}, S4 (dB(A))	52	61	61	73	67	61	56	48	74
L_{WA2}, S5 (dB(A))	56	65	67	70	68	66	62	54	75
L_{WA5}, S1 (dB(A))	23	39	41	43	42	41	32	17	49
L_{WA5}, S2 (dB(A))	32	48	55	55	52	54	49	35	61
L_{WA5}, S3 (dB(A))	41	60	60	73	65	68	64	55	75
L_{WA5}, S4 (dB(A))	49	68	68	76	74	76	74	68	82
L_{WA5}, S5 (dB(A))	52	71	72	75	78	80	78	73	85
L_{WA6}, S1 (dB(A))	22	48	42	47	48	43	35	20	53
L_{WA6}, S2 (dB(A))	32	44	54	58	58	56	54	47	64
L_{WA6}, S3 (dB(A))	43	55	63	72	72	70	71	67	78
L_{WA6}, S4 (dB(A))	61	68	72	80	84	82	83	80	89
L_{WA6}, S5 (dB(A))	61	68	75	81	87	86	86	82	92

L_{WA2}= housing sound power level in dB.
 L_{WA5}= free inlet sound power level in dB.
 L_{WA6}= free outlet sound power level in dB.

EPK 25/4 B

Characteristic curve



Dimensioned drawing [mm]

