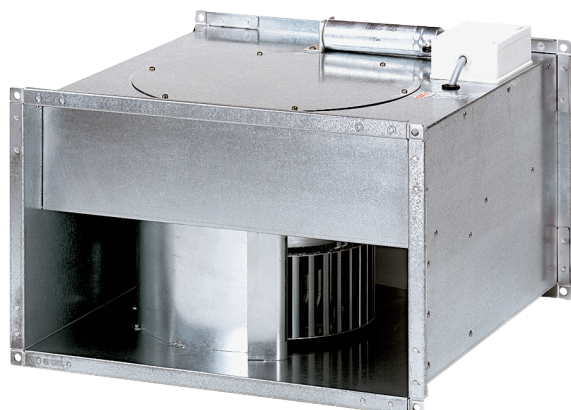


EPK 25/6 B



Short description

Centrifugal channel fan, single-phase AC

Article number 0086.0652

Technical data

Air flow volume	1.600 m ³ /h
Rotating speed	930 1/min
Speed controllable	✓
Type of voltage	Alternating current
Rated voltage	400 V
Nominal output	320 W
I _{nom}	1,75 A
I _{max}	2 A
Degree of protection	IP 55
Insulation class	B
Mains cable	3 x 1,5 mm ²
Installation position	vertical / horizontal
Weight	24 kg
Weight including packaging	24,3 kg
Channel dimension	500 mm x 300 mm
Width with packaging	560 mm
Height with packaging	420 mm
Depth with packaging	560 mm
Airstream temperature at nominal current	40 °C
Airstream temperature at I _{Max}	40 °C
Packing unit	1 piece
Range	D
GTIN (EAN)	4012799866527

Sound power level in octave range

	63 Hz	125 Hz	250 Hz	500 Hz	1 kHz	2 kHz	4 kHz	8 kHz	Total
L_{WA2, S1} (dB(A))	25	31	37	36	33	27	14	2	41

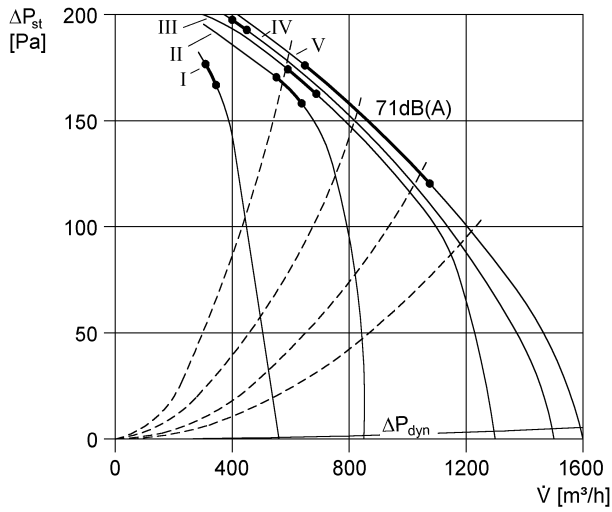
EPK 25/6 B

	63 Hz	125 Hz	250 Hz	500 Hz	1 kHz	2 kHz	4 kHz	8 kHz	Total
L_{WA2}, S2 (dB(A))	36	40	45	44	43	42	32	15	50
L_{WA2}, S3 (dB(A))	43	50	52	54	52	50	46	33	59
L_{WA2}, S4 (dB(A))	48	54	57	58	57	55	51	43	64
L_{WA2}, S5 (dB(A))	49	56	66	59	59	57	53	45	68
L_{WA5}, S1 (dB(A))	22	35	40	41	41	41	32	15	47
L_{WA5}, S2 (dB(A))	31	45	48	50	50	54	49	35	58
L_{WA5}, S3 (dB(A))	39	55	55	61	60	63	61	50	68
L_{WA5}, S4 (dB(A))	43	61	60	65	65	68	67	59	73
L_{WA5}, S5 (dB(A))	45	62	65	66	68	70	69	62	75
L_{WA6}, S1 (dB(A))	22	31	43	46	47	43	35	19	52
L_{WA6}, S2 (dB(A))	32	41	52	56	58	56	53	39	62
L_{WA6}, S3 (dB(A))	41	52	59	68	69	68	68	64	75
L_{WA6}, S4 (dB(A))	45	57	65	73	74	72	72	67	80
L_{WA6}, S5 (dB(A))	48	60	73	74	77	75	76	71	82

L_{WA2}= housing sound power level in dB.
 L_{WA5}= free inlet sound power level in dB.
 L_{WA6}= free outlet sound power level in dB.

EPK 25/6 B

Characteristic curve



Dimensioned drawing [mm]

