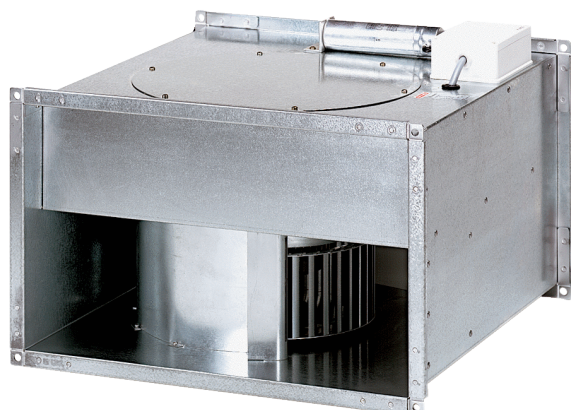


EPK 28/6 B



Short description

Centrifugal channel fan, single-phase AC

Article number 0086.0654

Technical data

Air flow volume	2.400 m ³ /h
Rotating speed	930 1/min
Speed controllable	✓
Type of voltage	Alternating current
Rated voltage	230 V
Nominal output	430 W
I _{nom}	2,25 A
I _{max}	3,3 A
Degree of protection	IP 55
Insulation class	B
Mains cable	3 x 1,5 mm ²
Installation position	vertical / horizontal
Weight	31,3 kg
Weight including packaging	32 kg
Channel dimension	600 mm x 300 mm
Width with packaging	690 mm
Height with packaging	420 mm
Depth with packaging	670 mm
Airstream temperature at nominal current	60 °C
Airstream temperature at I _{Max}	60 °C
Packing unit	1 piece
Range	D
GTIN (EAN)	4012799866541

Sound power level in octave range

	63 Hz	125 Hz	250 Hz	500 Hz	1 kHz	2 kHz	4 kHz	8 kHz	Total
L_{WA2, S1} (dB(A))	26	43	35	38	35	28	16	1	45

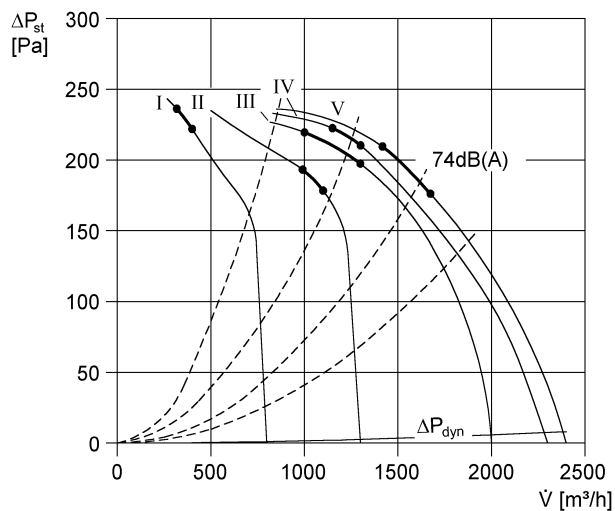
EPK 28/6 B

	63 Hz	125 Hz	250 Hz	500 Hz	1 kHz	2 kHz	4 kHz	8 kHz	Total
L_{WA2}, S2 (dB(A))	37	52	46	46	45	42	35	20	55
L_{WA2}, S3 (dB(A))	47	61	56	58	55	53	49	39	65
L_{WA2}, S4 (dB(A))	50	62	60	60	59	56	53	44	67
L_{WA2}, S5 (dB(A))	51	61	61	61	60	58	54	46	68
L_{WA5}, S1 (dB(A))	24	38	40	45	43	43	34	18	50
L_{WA5}, S2 (dB(A))	35	50	52	55	54	57	53	40	62
L_{WA5}, S3 (dB(A))	45	61	61	67	65	67	65	56	73
L_{WA5}, S4 (dB(A))	48	65	64	69	70	71	70	62	77
L_{WA5}, S5 (dB(A))	49	66	66	70	71	73	71	64	78
L_{WA6}, S1 (dB(A))	26	36	41	50	50	48	47	44	56
L_{WA6}, S2 (dB(A))	40	51	54	62	65	65	67	64	72
L_{WA6}, S3 (dB(A))	52	61	64	73	75	75	77	73	82
L_{WA6}, S4 (dB(A))	55	64	67	76	79	78	79	75	85
L_{WA6}, S5 (dB(A))	58	66	69	77	80	79	81	77	86

L_{WA2}= housing sound power level in dB.
 L_{WA5}= free inlet sound power level in dB.
 L_{WA6}= free outlet sound power level in dB.

EPK 28/6 B

Characteristic curve



Dimensioned drawing [mm]

