

ERM 22



Short description

Semi-centrifugal duct fan, single-phase AC, with 2 reducers to DN 200

Application examples

Commercial premises, Canteen, Air extraction system, Workshop, Workplace air extraction system

Article number 0080.0204

Technical data

Air flow volume	580 m ³ /h (Measured with 1 m duct on the inlet and outlet side)
Rotating speed	2.750 1/min
Speed controllable	✓
Type of voltage	Alternating current
Rated voltage	230 V
Frequency	50 Hz
Nominal output	165 W
I _{nom}	0,7 A
I _{max}	0,95 A
Degree of protection	IP 55
Insulation class	F
Mains cable	3 x 1,5 mm ²
Housing material	Synthetic material, shock-resistant
Colour	Pearl white, similar to RAL 1013
Weight	5,6 kg
Weight including packaging	5,48 kg
Nominal size	200 mm
Width with packaging	290 mm
Height with packaging	235 mm
Depth with packaging	285 mm
Airstream temperature at nominal current	-20 °C up to 60 °C
Airstream temperature at I _{Max}	-20 °C up to 60 °C
Packing unit	1 piece
Range	C
GTIN (EAN)	4012799802044

ERM 22

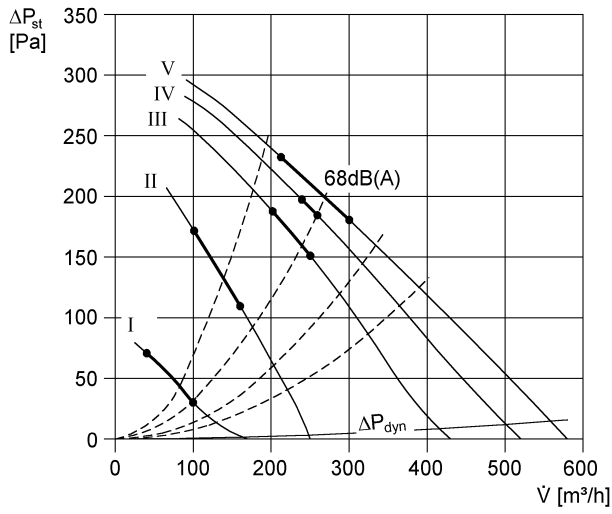
Sound power level in octave range

	63 Hz	125 Hz	250 Hz	500 Hz	1 kHz	2 kHz	4 kHz	8 kHz	Total
L_{WA2}, S1 (dB(A))	25	26	22	24	30	35	21	15	37
L_{WA2}, S2 (dB(A))	23	36	34	35	38	41	32	23	45
L_{WA2}, S3 (dB(A))	28	45	47	48	48	51	43	39	55
L_{WA2}, S4 (dB(A))	30	52	52	53	53	55	48	46	61
L_{WA2}, S5 (dB(A))	36	56	55	57	56	57	51	49	63
L_{WA5}, S1 (dB(A))	19	26	29	34	38	36	27	24	42
L_{WA5}, S2 (dB(A))	28	38	42	47	48	47	41	34	53
L_{WA5}, S3 (dB(A))	35	48	53	60	60	60	53	49	66
L_{WA5}, S4 (dB(A))	37	52	56	65	65	64	58	54	70
L_{WA5}, S5 (dB(A))	39	56	58	67	66	66	60	56	72
L_{WA6}, S1 (dB(A))	23	27	28	36	38	37	32	23	43
L_{WA6}, S2 (dB(A))	29	38	42	50	51	49	46	33	56
L_{WA6}, S3 (dB(A))	36	47	55	64	63	62	58	49	69
L_{WA6}, S4 (dB(A))	38	51	61	69	68	67	64	56	74
L_{WA6}, S5 (dB(A))	41	53	63	72	71	70	66	59	77

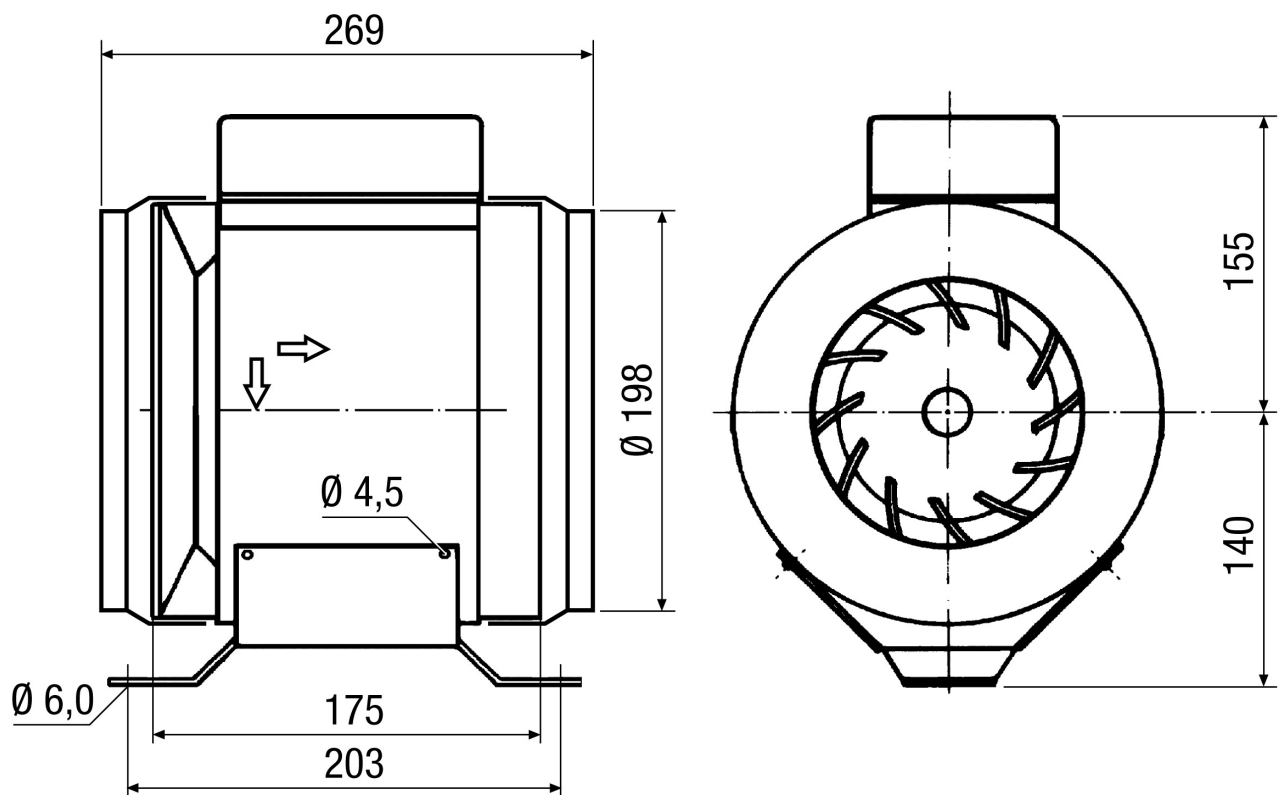
L_{WA2}= housing sound power level in dB.
 L_{WA5}= free inlet sound power level in dB.
 L_{WA6}= free outlet sound power level in dB.

ERM 22

Characteristic curve



Dimensioned drawing [mm]



ERM 22

