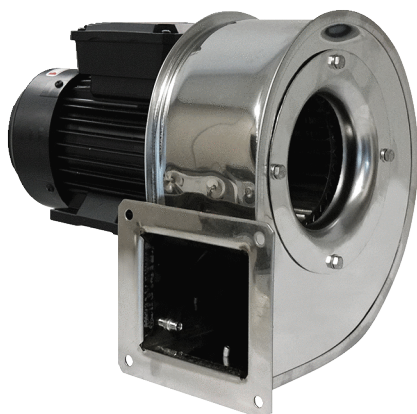


# GRM ES 12/2 D



## Short description

Metal centrifugal blower with stainless steel housing, size 120, three-phase AC

## Application examples

Industrial applications

Article number 0073.0321

## Technical data

Air flow volume	850 m³/h
Rotating speed	2.880 1/min
Impeller type	radial
Speed controllable	✓
Reversing capacity	–
Type of voltage	Three-phase AC
Rated voltage	400 V
Frequency	50 Hz
Nominal output	250 W
I <sub>nom</sub>	0,65 A
Degree of protection	IP 55
Insulation class	F
Pole-changeable	–
Installation site	Duct connection
Installation position	Horizontal
Housing material	Stainless steel
Impeller material	Stainless steel
Colour	Silver
Weight	7 kg
Weight including packaging	7,5 kg
Width	300 mm
Height	274 mm
Depth	246 mm
Width with packaging	315 mm
Height with packaging	300 mm
Depth with packaging	250 mm
Airstream temperature at I <sub>Max</sub>	-20 °C up to 80 °C
PTC DIN 44082	M 100
Packing unit	1 piece

# GRM ES 12/2 D

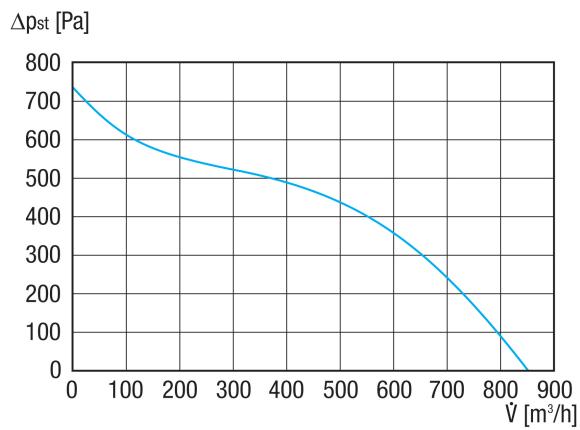
Range	C
GTIN (EAN)	4012799733218

## Sound power level in octave range

	63 Hz	125 Hz	250 Hz	500 Hz	1 kHz	2 kHz	4 kHz	8 kHz	Total
<b>L<sub>WA5, S5</sub></b> <b>(dB(A))</b>	44	54	68	73	69	74	69	65	78

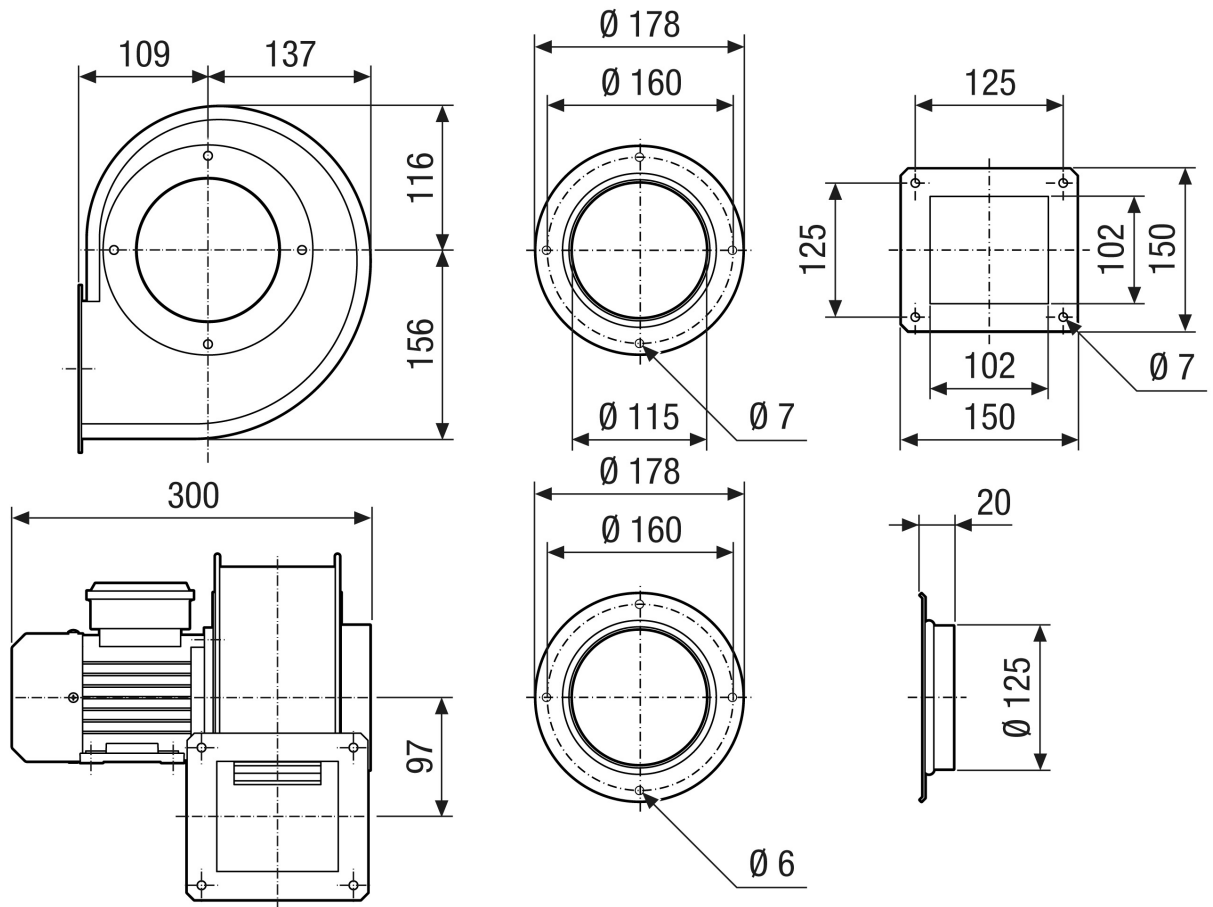
L<sub>WA5</sub>= free inlet sound power level in dB.

## Characteristic curve



# GRM ES 12/2 D

Dimensioned drawing [mm]



# GRM ES 12/2 D

Dimensioned drawing Housing orientation [mm]

①						
	0°	45°	90°	135°	270°	315°
②						

① Right-hand version

② Left-hand version

This size cannot be ordered in the versions 45°, 135°, 315°