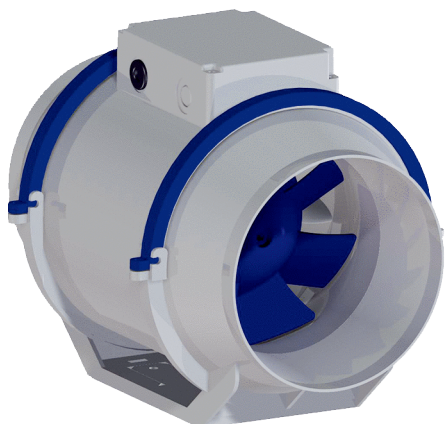


# HDR 16 EC



## Short description

Diagonal fan for duct installation, DN 160, motor with EC technology, three-level

## Application examples

Production site, Storage facility, Day room, Showroom, Workshop

Article number 0080.0543

## Technical data

Air flow volume	662 m <sup>3</sup> /h
Rotating speed	2.680 1/min
Impeller type	diagonal
Speed controllable	✓
Reversing capacity	–
Type of voltage	Alternating current
Rated voltage	230 V
Frequency	50 Hz/60 Hz
Nominal output	36,5 W (in opt. efficiency)
I <sub>nom</sub>	0,31 A (in opt. efficiency)
I <sub>max</sub>	0,37 A
Degree of protection	IP 44
Insulation class	B
Installation position	vertical / horizontal
Material	PP plastic
Housing material	Polypropylene
Colour	grey
Weight	1,7 kg
Weight including packaging	2,45 kg
Nominal size	160 mm
Width	235 mm
Height	244,5 mm
Depth	295 mm
Width with packaging	255 mm
Height with packaging	245 mm
Depth with packaging	320 mm
Airstream temperature at I <sub>Max</sub>	50 °C
Packing unit	1 piece
Range	E

# HDR 16 EC

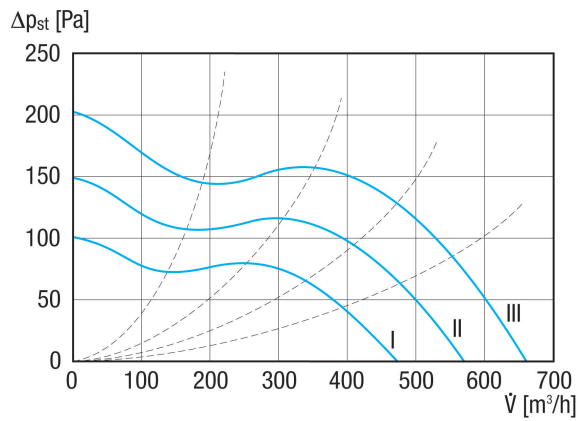
GTIN (EAN)	4012799805434
------------	---------------

## Sound power level in octave range

	63 Hz	125 Hz	250 Hz	500 Hz	1 kHz	2 kHz	4 kHz	8 kHz	Total
<b>L<sub>WA5</sub>, high (dB)</b>	23,5	42,7	56,1	61,8	59,4	62,7	59,1	49,9	67

L<sub>WA5</sub>= free inlet sound power level in dB.

## Characteristic curve



# HDR 16 EC

Dimensioned drawing [mm]

