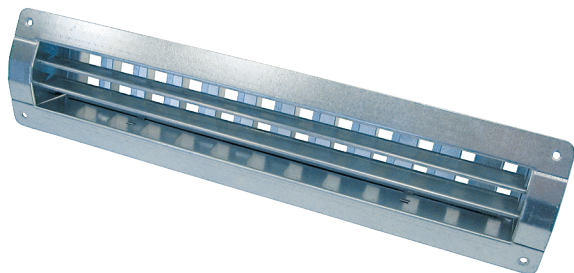


LGR 82/6



Short description

Internal grille for ventilation and air extraction for installation in ducts, sheet steel, galvanised, max. 500 m³/h

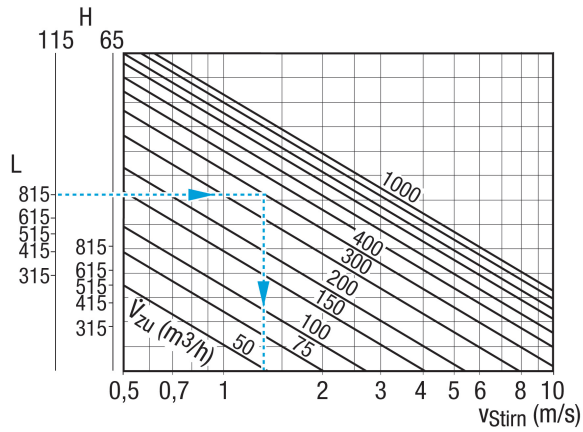
Article number 0151.0358

Technical data

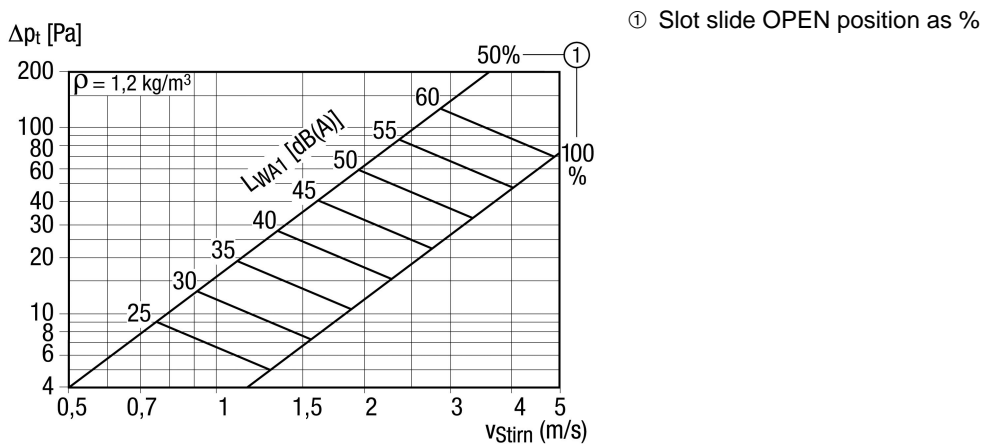
Air direction	Ventilation and air extraction
Practical air throughput at 75% opening of the slot slide	300 m ³ /h - 500 m ³ /h
Installation	Inside
Installation site	Duct
Material	Sheet steel, galvanised
Weight	1,49 kg
Weight including packaging	1,73 kg
Suitable for nominal size	140 mm - 400 mm (ideal 250 mm)
Width	858 mm
Height	113 mm
Depth	56 mm
Width with packaging	890 mm
Height with packaging	120 mm
Depth with packaging	70 mm
Packing unit	1 piece
Range	C
GTIN (EAN)	4012799513582

LGR 82/6

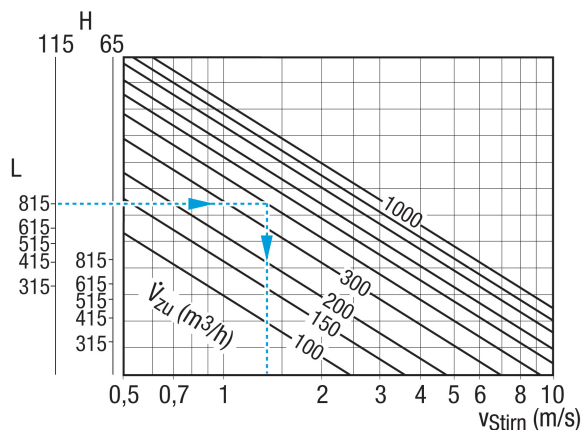
Characteristic curve Exhaust air front speed



Characteristic curve Exhaust air pressure losses

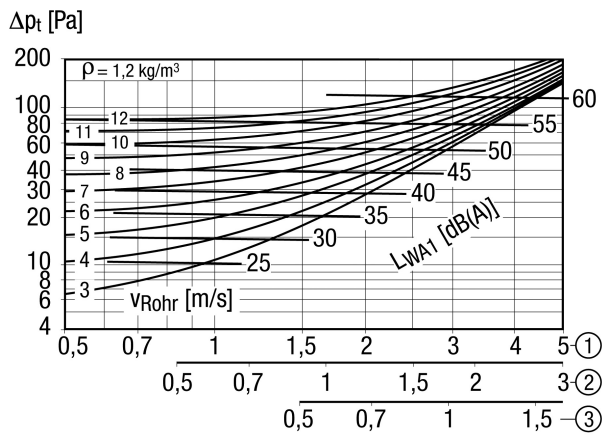


Characteristic curve Supply air front speed



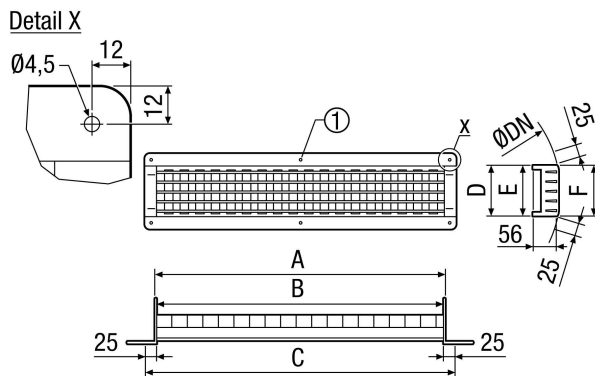
LGR 82/6

Characteristic curve Supply air pressure losses



- ① Front speed at 100 % open slot slide position
- ② Front speed at 50 % open slot slide position
- ③ Front speed at 25 % open slot slide position

Dimensioned drawing [mm]



A	B	C	D	E	F
815	812	858	65	60	58

① With LGR 82/6 and LGR 82/12 only