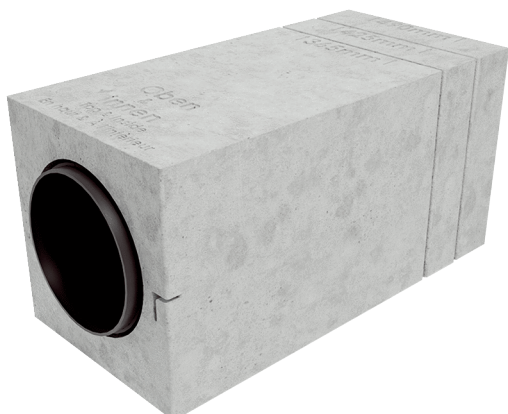


# PP 45 RS



## Short description

Insulated wall block for PushPull 45 and PushPull Balanced PPB 30 single-room ventilation unit

Article number 0093.1751

## Technical data

Installation site	Outside wall
Colour	White
Weight	1,2 kg
Weight including packaging	2,6 kg
Width	240 mm
Height	248 mm
Depth	540 mm
Width with packaging	250 mm
Height with packaging	250 mm
Depth with packaging	540 mm
Packing unit	1 piece
Range	K
GTIN (EAN)	4012799981084

## Dimensioned drawing [mm]

