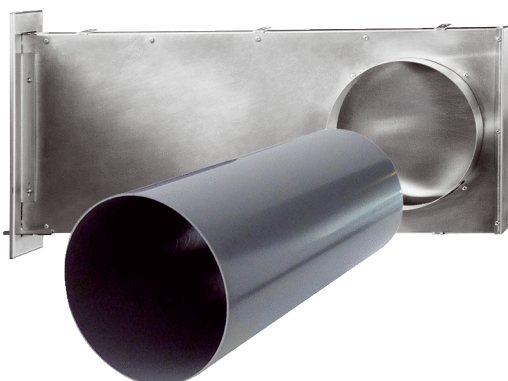


# PP 60 KL-SR



## Short description

Shell kit comprising soffit element, wall sleeve and plaster protective covers for PushPull 60 K single-room air extraction unit with heat recovery

## Application examples

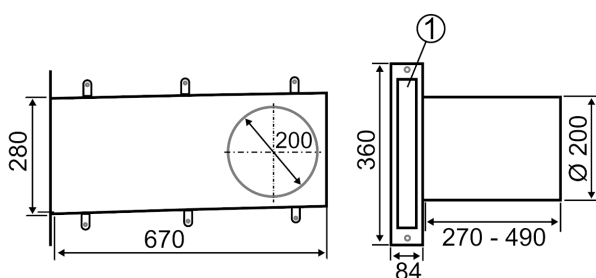
Single-family house, Multiple family unit, Office, Doctor's practice, Commercial premises

Article number 0095.0206

## Technical data

Air flow volume	17 m³/h / 21 m³/h / 27 m³/h / 39 m³/h / 46 m³/h
Installation site	Window soffit
Installation position	horizontal
Material	Aluminium/stainless steel
Colour	Stainless steel, brushed
Weight	2,7 kg
Weight including packaging	4,276 kg
Nominal size	200 mm
Width	670 mm
Height	360 mm
Depth	574 mm
Width with packaging	690 mm
Height with packaging	320 mm
Depth with packaging	400 mm
Packing unit	1 piece
Range	K
GTIN (EAN)	4012799952060

## Dimensioned drawing [mm]



① Width: 40 mm

# PP 60 KL-SR

