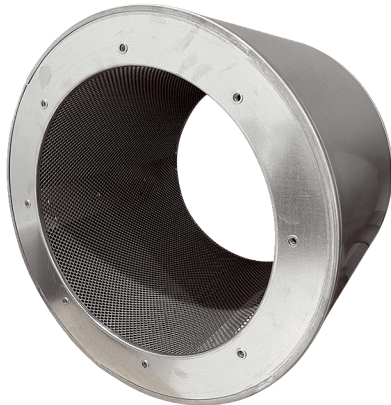


# RSI 100/1000



## Short description

Tubular sound absorber without baffle, length 1000 mm, DN 1000

Article number 0073.0241

## Technical data

Material	Steel, galvanised
Colour	Silver
Weight	113 kg
Weight including packaging	113 kg
Width	1.200 mm
Height	1.200 mm
Depth	1.000 mm
Width with packaging	1.200 mm
Height with packaging	1.200 mm
Depth with packaging	1.000 mm
Insertion loss at 63 Hz	2 dB
Insertion loss at 125 Hz	3 dB
Insertion loss at 250 Hz	8 dB
Insertion loss at 500 Hz	12 dB
Insertion loss at 1 kHz	8 dB
Insertion loss at 2 kHz	4 dB
Insertion loss at 4 kHz	4 dB
Insertion loss at 8 kHz	4 dB
Total insertion loss	
Insertion loss note	
Packing unit	1 piece
Range	C
GTIN (EAN)	4012799732419

# RSI 100/1000

Dimensioned drawing [mm]

