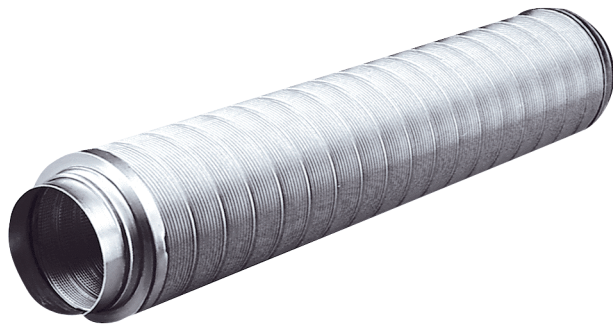


# RSR 10



### Short description

Tubular sound absorber with 25 mm sound absorbing cover, length: 1000 mm, DN 100

### Application examples

Showroom, Restaurant, Theatre, Production site, Industrial building

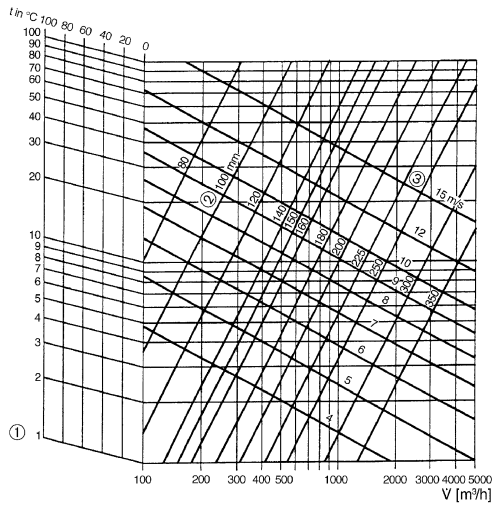
Article number 0092.0311

### Technical data

Model	25 mm sound absorbing cover
Material	Aluminium
Weight	1,4 kg
Weight including packaging	1,23 kg
Nominal size	100 mm
Width	159,5 mm
Height	159,5 mm
Depth	1.120 mm
Width with packaging	175 mm
Height with packaging	165 mm
Depth with packaging	1.185 mm
Insertion loss at 63 Hz	4 dB
Insertion loss at 125 Hz	6 dB
Insertion loss at 250 Hz	18 dB
Insertion loss at 500 Hz	33 dB
Insertion loss at 1 kHz	50 dB
Insertion loss at 2 kHz	50 dB
Insertion loss at 4 kHz	25 dB
Insertion loss at 8 kHz	19 dB
Total insertion loss	
Insertion loss note	
Sound insulation	yes
Packing unit	1 piece
Range	C
GTIN (EAN)	4012799923114

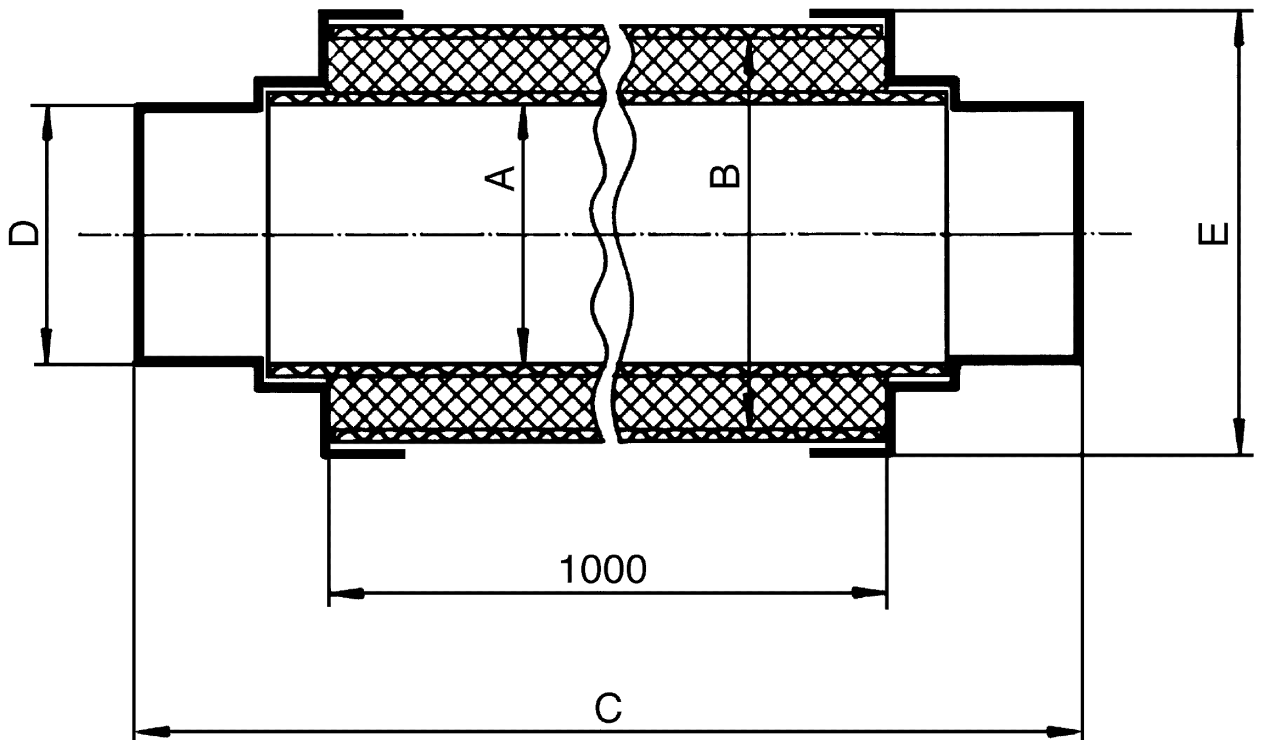
# RSR 10

## Characteristic curve Pressure losses



- ① Pressure loss in Pa/m sound absorber
- ② Duct diameter
- ③ Velocity of flow

## Dimensioned drawing [mm]





# RSR 10

A	B	C	D	E
100	150	1.120	99,5	200