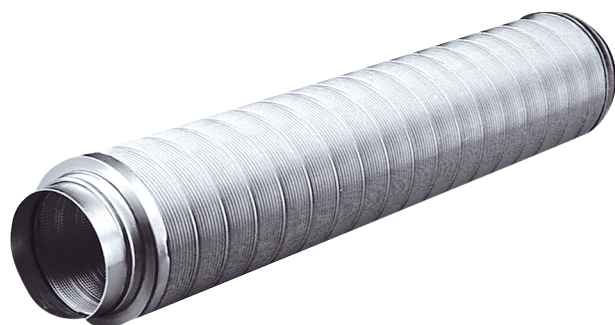


# RSR 12



## Short description

Tubular sound absorber with 25 mm sound absorbing cover, length: 1000 mm, DN 125

## Application examples

Showroom, Restaurant, Theatre, Production site, Industrial building

Article number 0092.0312

## Technical data

Model	25 mm sound absorbing cover
Material	Aluminium
Weight	1,6 kg
Weight including packaging	1,64 kg
Nominal size	125 mm
Width	189,5 mm
Height	189,5 mm
Depth	1.120 mm
Width with packaging	225 mm
Height with packaging	225 mm
Depth with packaging	1.185 mm
Insertion loss at 63 Hz	5 dB
Insertion loss at 125 Hz	6 dB
Insertion loss at 250 Hz	15 dB
Insertion loss at 500 Hz	30 dB
Insertion loss at 1 kHz	47 dB
Insertion loss at 2 kHz	49 dB
Insertion loss at 4 kHz	25 dB
Insertion loss at 8 kHz	17 dB
Total insertion loss	
Insertion loss note	
Sound insulation	yes
Packing unit	1 piece
Range	C
GTIN (EAN)	4012799923121

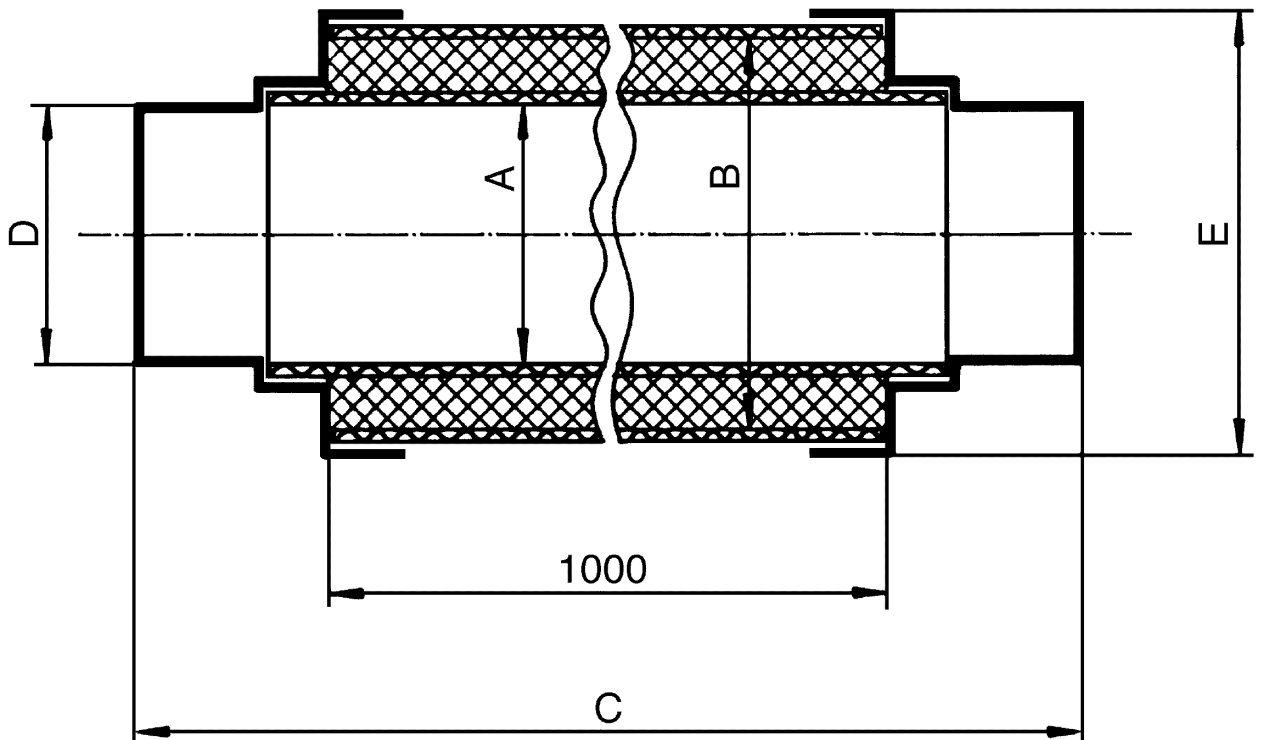
# RSR 12

## Characteristic curve Pressure losses



- ① Pressure loss in Pa/m sound absorber
- ② Duct diameter
- ③ Velocity of flow

## Dimensioned drawing [mm]





# RSR 12

A	B	C	D	E
125	180	1.120	124,5	224