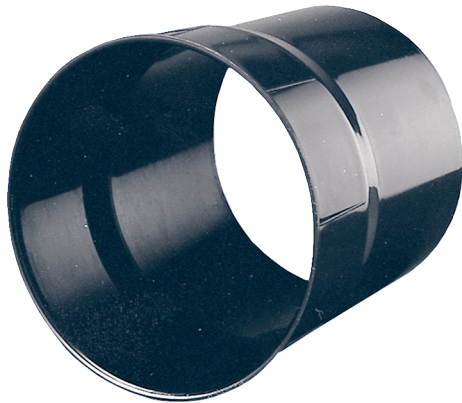


WH 31



Short description

Synthetic material wall sleeves, for fans with the nominal size 315

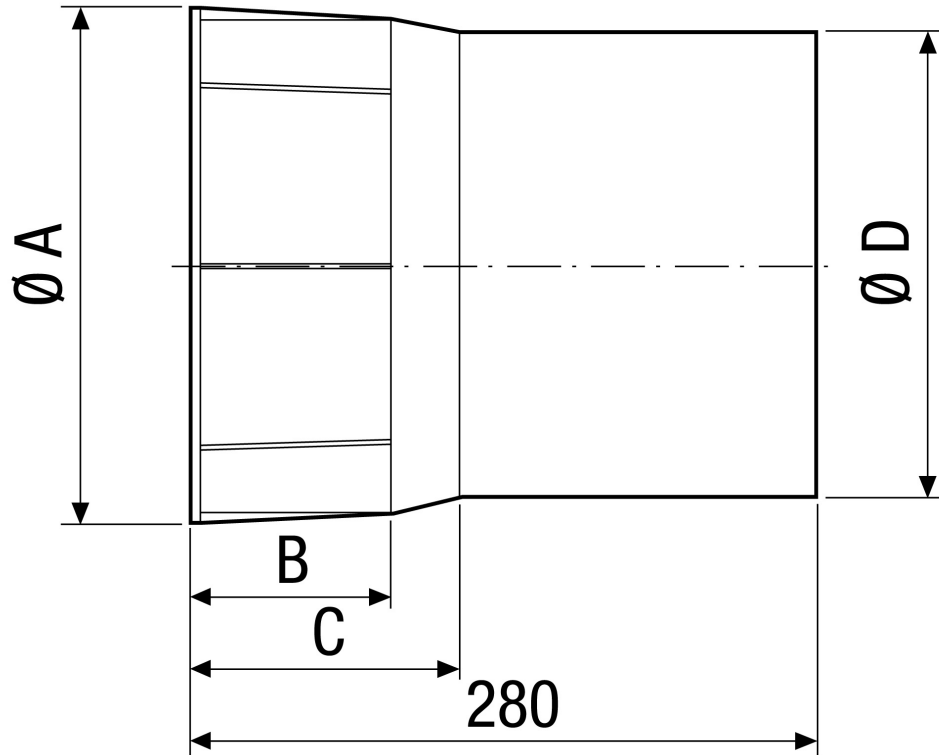
Article number 0059.0231

Technical data

Installation site	Wall / Ceiling
Material	Synthetic material
Weight	1,2 kg
Weight including packaging	1,24 kg
Suitable for nominal size	315 mm
Width	356 mm
Height	356 mm
Depth	280 mm
Width with packaging	356 mm
Height with packaging	356 mm
Depth with packaging	280 mm
Packing unit	1 piece
Range	C
GTIN (EAN)	4012799592310

WH 31

Dimensioned drawing [mm]



A	B	C	D
356	126	155	328