

# WRG 300 WPK



## Short description

Compact ventilation system with heat recovery and heat pump with cooling function

Article number 0082.0042

## Technical data

Air flow volume	320 m <sup>3</sup> /h (System pressure at 150 Pa)
Power consumption	40 W / 295 W / 440 W / Power consumption measured at kwl
I <sub>max</sub>	3 A (strom-kwl)
Degree of protection	IP 00
Colour	White-blue
Weight	50
Heater power rating	2.010 W
Heat pump	Air/air
Cooling capacity	850 W
Packing unit	1 piece
Range	D
GTIN (EAN)	4012799820420

## Sound power level in octave range

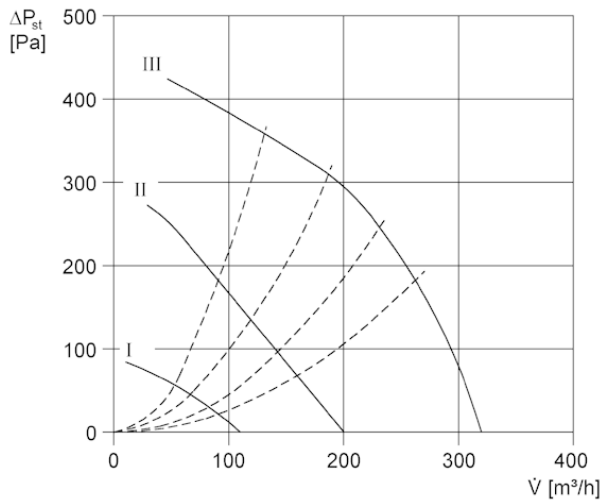
	63 Hz	125 Hz	250 Hz	500 Hz	1 kHz	2 kHz	4 kHz	8 kHz	Total
L <sub>WA2, high</sub> (dB(A))	30	44	51	49	48	44	40	35	55
L <sub>WA2, medium</sub> (dB(A))	29	41	46	43	43	44	46	43	53
L <sub>WA2, low</sub> (dB(A))	13	25	24	18	17	16	16	14	38
L <sub>WA5, high</sub> (dB(A))	19	33	39	46	48	44	42	36	52
L <sub>WA5, medium</sub> (dB(A))	13	24	28	41	35	31	26	18	51
L <sub>WA5, low</sub> (dB(A))	8	15	21	24	22	17	15	13	37

# WRG 300 WPK

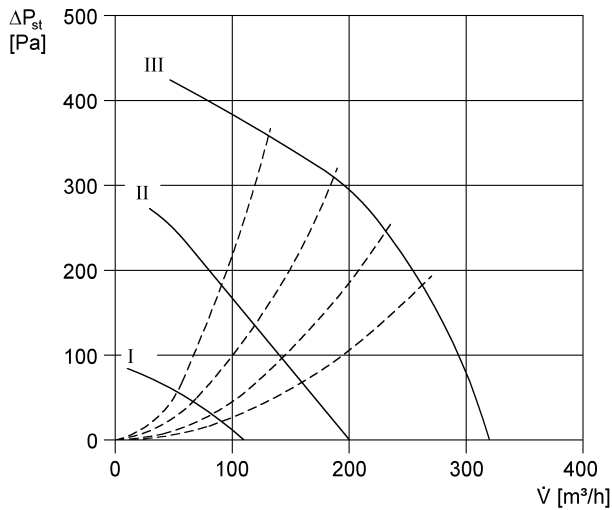
	63 Hz	125 Hz	250 Hz	500 Hz	1 kHz	2 kHz	4 kHz	8 kHz	Total
<b>L<sub>WA6, high</sub></b> <b>(dB(A))</b>	19	33	39	46	48	44	42	36	52
<b>L<sub>WA6, medi-</sub></b> <b>um (dB(A))</b>	13	24	28	41	35	31	26	18	43
<b>L<sub>WA6, low</sub></b> <b>(dB(A))</b>	8	15	21	24	22	17	15	13	37

L<sub>WA2</sub>= housing sound power level in dB.  
 L<sub>WA5</sub>= free inlet sound power level in dB.  
 L<sub>WA6</sub>= free outlet sound power level in dB.

## Characteristic curve

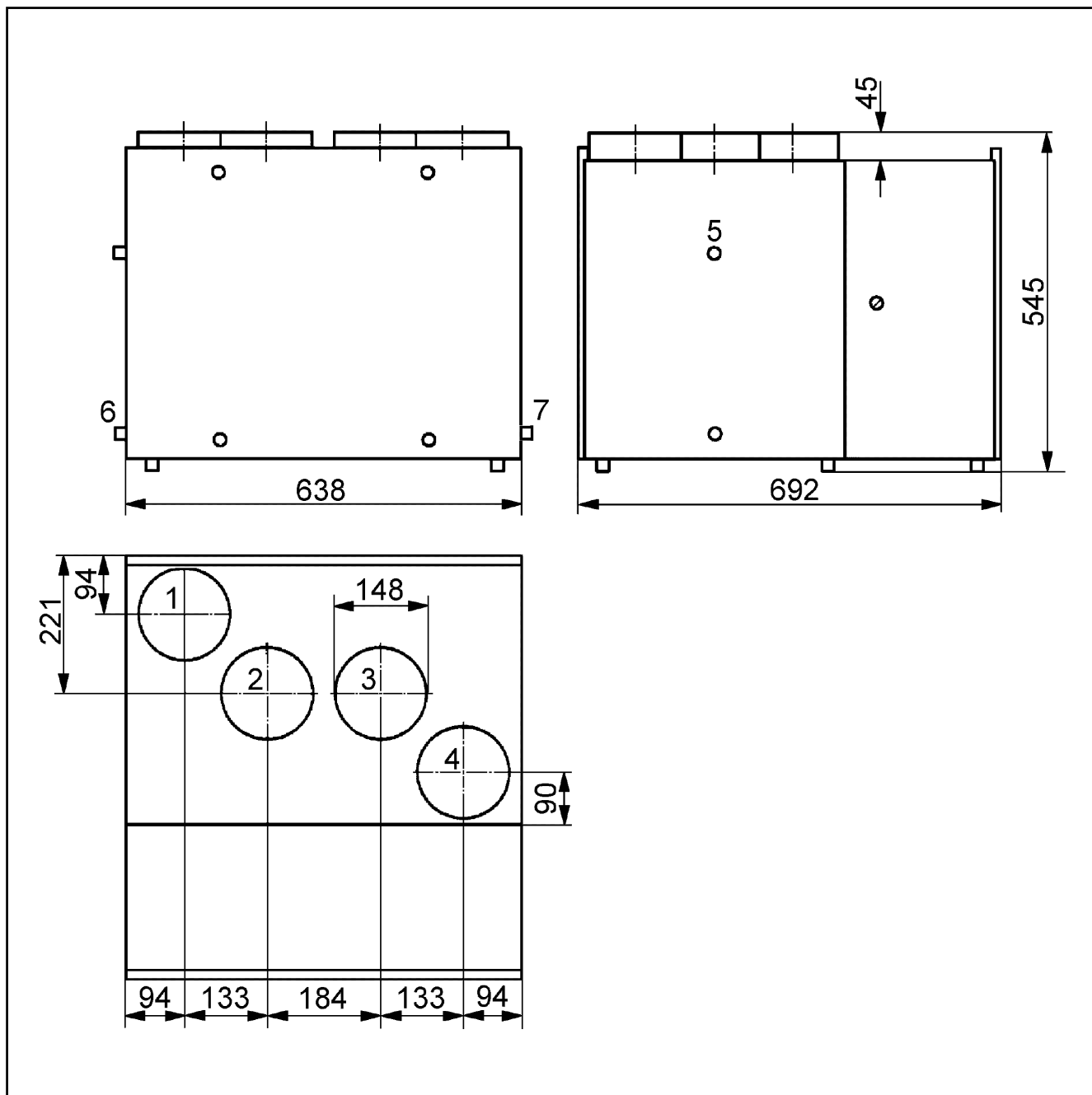


## Characteristic curve



# WRG 300 WPK

Dimensioned drawing [mm]



- ① NW 150 mm outgoing air
- ② NW 150 mm outside air
- ③ NW 150 mm exhaust air
- ④ NW 150 mm supply air
- ⑤ Electrical connection
- ⑥ Condensation connection
- ⑦ WPK only: Additional condensation connection