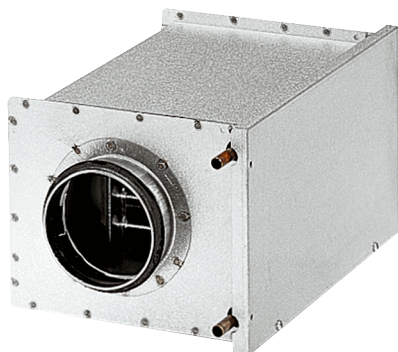


WRH 10-1



Short description

Water air heater, sheet steel, galvanised, 1.3 kW, DN 100

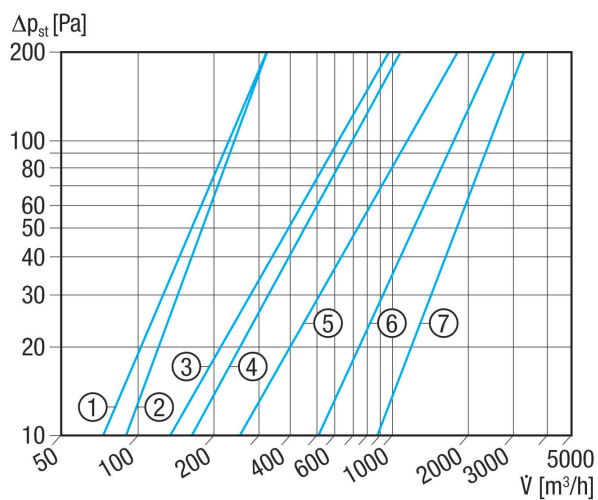
Article number 0082.0116

Technical data

Installation position	vertical / horizontal
Housing material	Sheet steel, galvanised
Weight	3,45 kg
Weight including packaging	3,71 kg
Nominal size	100 mm
Open cross section	1.012 cm ²
Width	225 mm
Height	183 mm
Depth	380 mm
Width with packaging	265 mm
Height with packaging	205 mm
Depth with packaging	381 mm
Air heater type	Water
Heater power rating	1.300 W
Mass flow	55 kg/h
Inlet temperature	70 °C
Return flow temperature	50 °C
Max. water temperature	100 °C
Max. water pressure	6 bar
Water pressure difference	500 Pa
Packing unit	1 piece
Range	C
GTIN (EAN)	4012799821168

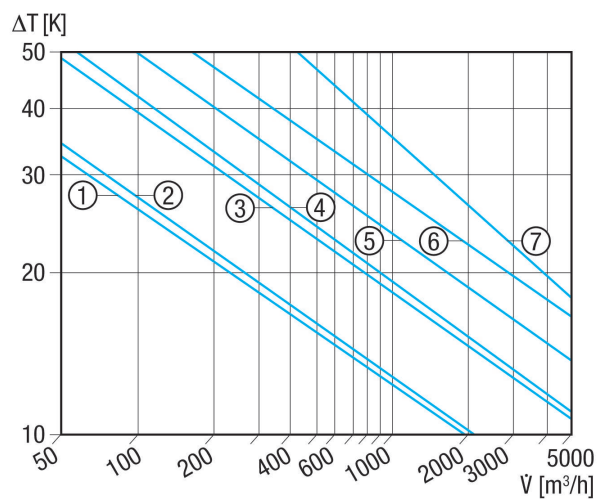
WRH 10-1

Characteristic curve Pressure losses



- ① WRH 10-1
- ② WRH 12-1
- ③ WRH 16-2
- ④ WRH 20-2
- ⑤ WRH 25-4
- ⑥ WRH 31-6
- ⑦ WRH 40-9

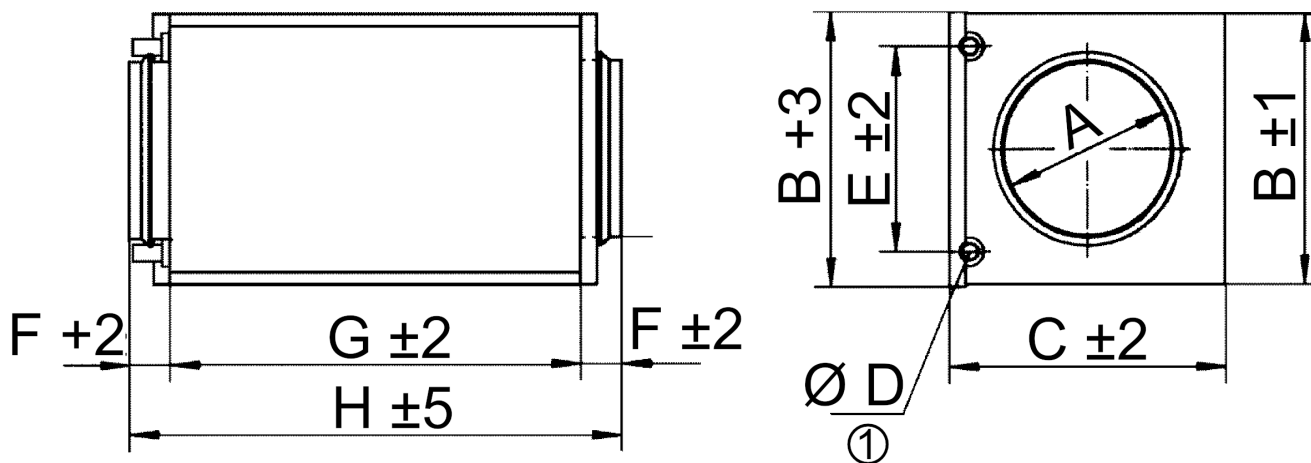
Characteristic curve Temperature rise



- ① WRH 10-1
- ② WRH 12-1
- ③ WRH 16-2
- ④ WRH 20-2
- ⑤ WRH 25-4
- ⑥ WRH 31-6
- ⑦ WRH 40-9

WRH 10-1

Dimensioned drawing [mm]



A	B	C	D	E	F	G	H
100	183	225	10	137	40	300	380

① External connection diameter