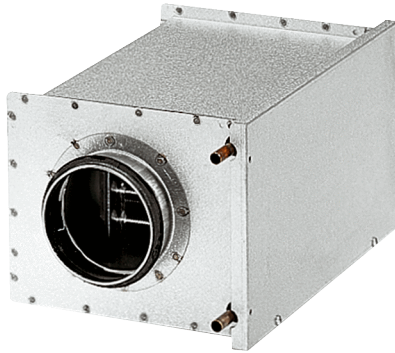


WRH 16-2



Short description

Water air heater, sheet steel, galvanised, 3.8 kW, DN 160

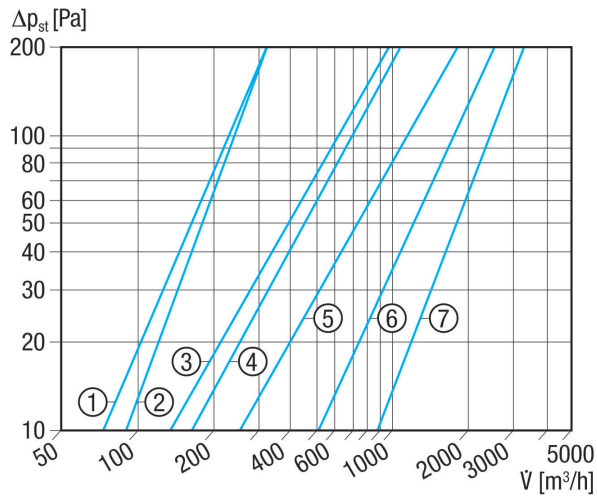
Article number 0082.0118

Technical data

| | |
|----------------------------|-------------------------|
| Installation position | vertical / horizontal |
| Housing material | Sheet steel, galvanised |
| Weight | 5,33 kg |
| Weight including packaging | 5,73 kg |
| Nominal size | 160 mm |
| Open cross section | 1.458 cm ² |
| Width | 305 mm |
| Height | 258 mm |
| Depth | 380 mm |
| Width with packaging | 275 mm |
| Height with packaging | 280 mm |
| Depth with packaging | 385 mm |
| Air heater type | Water |
| Heater power rating | 3.800 W |
| Mass flow | 135 kg/h |
| Inlet temperature | 70 °C |
| Return flow temperature | 50 °C |
| Max. water temperature | 100 °C |
| Max. water pressure | 6 bar |
| Water pressure difference | 6.700 Pa |
| Packing unit | 1 piece |
| Range | C |
| GTIN (EAN) | 4012799821182 |

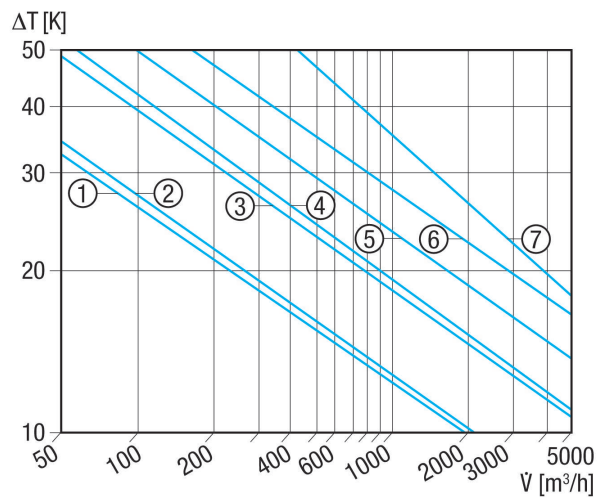
WRH 16-2

Characteristic curve Pressure losses



- ① WRH 10-1
- ② WRH 12-1
- ③ WRH 16-2
- ④ WRH 20-2
- ⑤ WRH 25-4
- ⑥ WRH 31-6
- ⑦ WRH 40-9

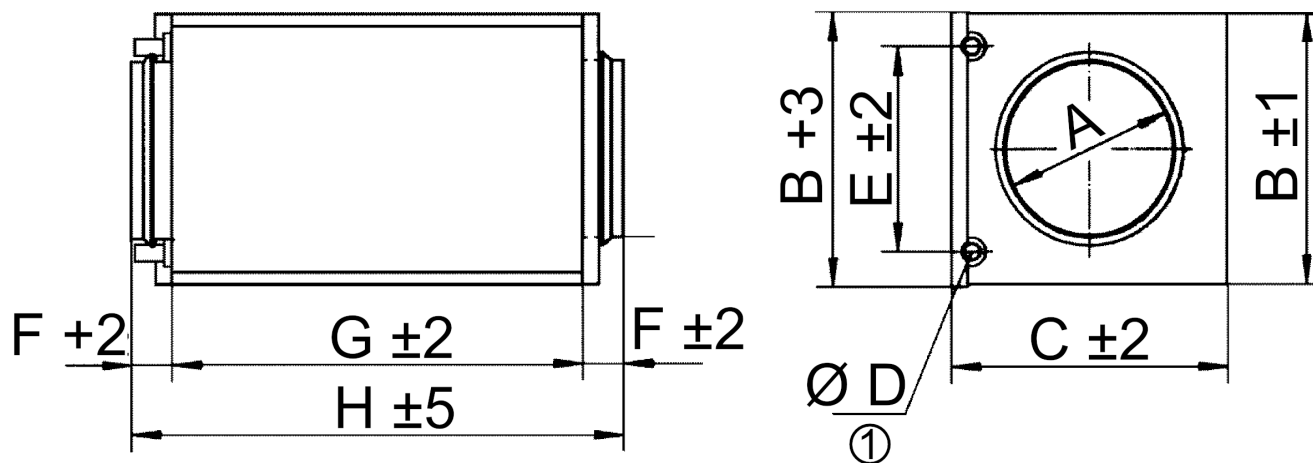
Characteristic curve Temperature rise



- ① WRH 10-1
- ② WRH 12-1
- ③ WRH 16-2
- ④ WRH 20-2
- ⑤ WRH 25-4
- ⑥ WRH 31-6
- ⑦ WRH 40-9

WRH 16-2

Dimensioned drawing [mm]



| A | B | C | D | E | F | G | H |
|-----|-----|-----|----|-----|----|-----|-----|
| 160 | 258 | 305 | 10 | 212 | 40 | 300 | 380 |

① External connection diameter