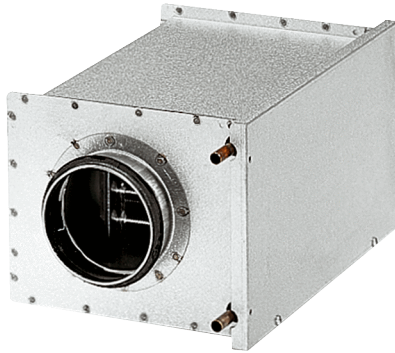


WRH 25-4



Short description

Water air heater, sheet steel, galvanised, 8.3 kW, DN 250

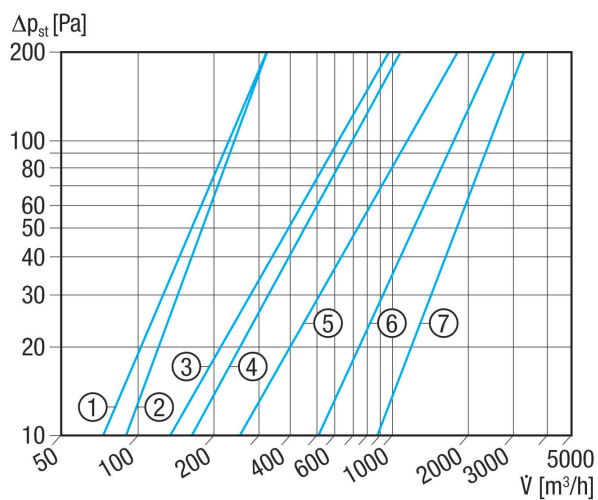
Article number 0082.0120

Technical data

Installation position	vertical / horizontal
Housing material	Sheet steel, galvanised
Weight	7,57 kg
Weight including packaging	8,1 kg
Nominal size	250 mm
Open cross section	2.268 cm ²
Width	385 mm
Height	333 mm
Depth	380 mm
Width with packaging	425 mm
Height with packaging	355 mm
Depth with packaging	381 mm
Air heater type	Water
Heater power rating	8.300 W
Mass flow	233 kg/h
Inlet temperature	70 °C
Return flow temperature	50 °C
Max. water temperature	100 °C
Max. water pressure	6 bar
Water pressure difference	5.300 Pa
Packing unit	1 piece
Range	C
GTIN (EAN)	4012799821205

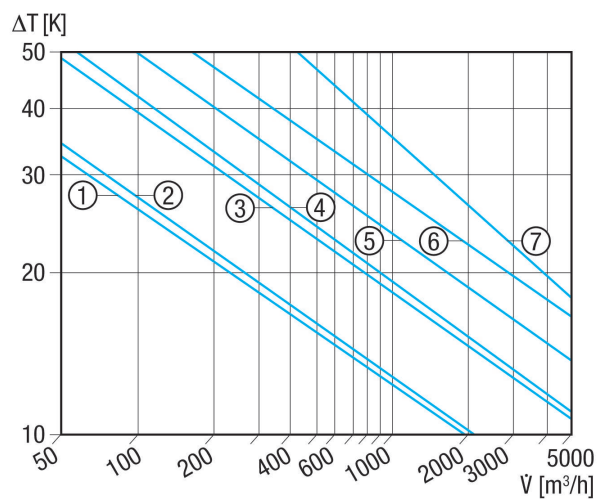
WRH 25-4

Characteristic curve Pressure losses



- ① WRH 10-1
- ② WRH 12-1
- ③ WRH 16-2
- ④ WRH 20-2
- ⑤ WRH 25-4
- ⑥ WRH 31-6
- ⑦ WRH 40-9

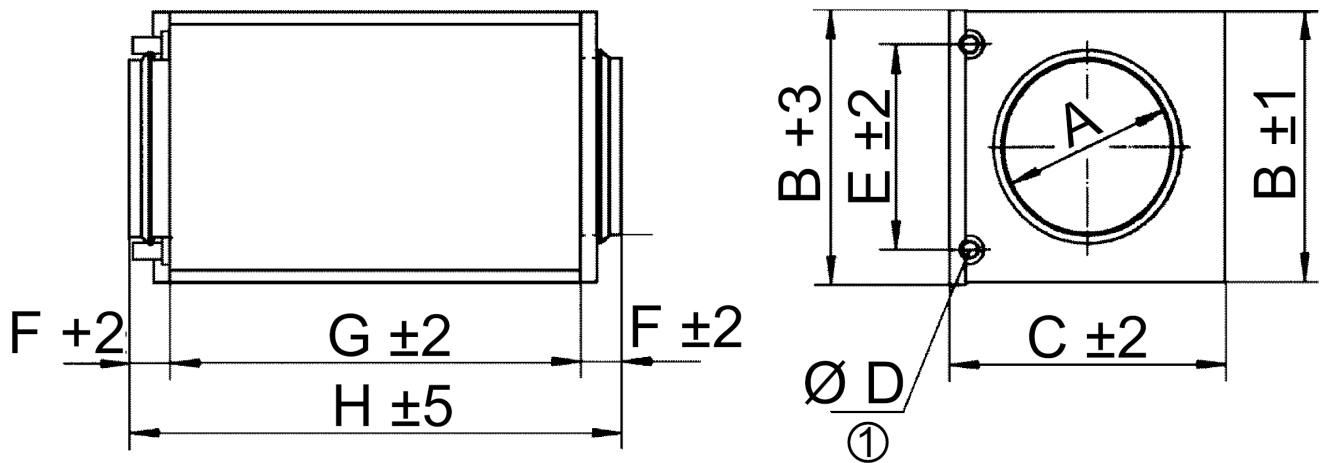
Characteristic curve Temperature rise



- ① WRH 10-1
- ② WRH 12-1
- ③ WRH 16-2
- ④ WRH 20-2
- ⑤ WRH 25-4
- ⑥ WRH 31-6
- ⑦ WRH 40-9

WRH 25-4

Dimensioned drawing [mm]



A	B	C	D	E	F	G	H
250	333	385	22	250	40	300	380

① External connection diameter