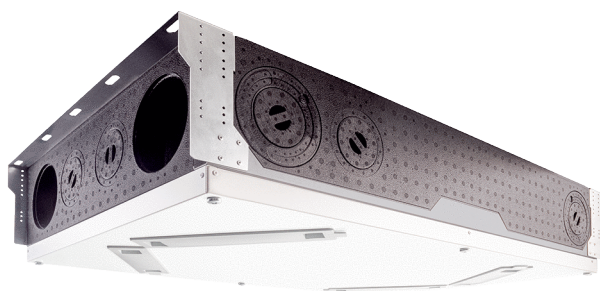


# WS 120 Trio QRV



## Short description

Compact and quiet centralised ventilation unit with cross-wise flow, exhaust air to the right, with effective heat and humidity recovery, EC fans with constant volumetric flow regulation, connection of a channel system, 40-120 m<sup>3</sup>/h, frost protection from integrated preheating register

## Application examples

Apartments, Terraced houses, Doctor's practice, Hotels, Retirement home

Article number 0095.0662

## Technical data

Model	Crosswise flow, exhaust air to the right, integrated preheating register
Air flow volume	40 m <sup>3</sup> /h - 120 m <sup>3</sup> /h
Rotating speed	2.200 1/min
SEC average	-38,03 kWh/(m <sup>2</sup> *a)
Energy efficiency class	A
Type of voltage	Alternating current
Rated voltage	230 V
Frequency	50 Hz/60 Hz
SPI value in accordance with DIN EN 13141-7 (A7)	0,27 Wh/m <sup>3</sup>
Power consumption in accordance with DIN EN 13141-7 (A7)	20 W
Stand-by power consumption	< 1 W
I <sub>max</sub>	5 A
Degree of protection	IP 00
DIBT approval	Applied for
Installation site	Wall / ceiling
System type	Centralised
Material	EPP plastic / galvanised sheet steel
Housing material	Plastic EPP
Heat exchanger material	Synthetic material
Colour	black / traffic white (RAL 9016)
Weight	25 kg
Weight including packaging	28 kg
Filter class	ISO ePM10 ≥ 50 % (M5) / ISO ePM1 ≥ 60 % (F7)
Width	600 mm
Height	210 mm
Depth	1.000 mm
Width with packaging	720 mm
Height with packaging	300 mm

# WS 120 Trio QRV

Depth with packaging	1.120 mm
Airstream temperature at I <sub>Max</sub>	-20 °C up to 50 °C
Max. degree of heat provision in accordance with DIN EN 13141-7 (A7)	84 %
Heat exchanger construction type	Enthalpy cross-counterflow
Humidity recovery with enthalpy heat exchanger in accordance with DIN EN 13141-7 (A2)	69 %
Position – exhaust air	right
Bypass	No
Frost protection	integrated
Enthalpy heat exchanger	yes
Antifreeze circuit	yes
Summer circuit	ECO exhaust air / ECO supply air
Filter monitoring	with time control
Humidity control	integrated
CO <sub>2</sub> regulation	Trio CO2 E, Trio CO2 I
Air quality control (optional)	Trio VOC E, Trio VOC I
KNX connection (optional)	K-SM
MODBUS interface	integrated
Control unit included in scope of delivery.	RLS 1 WR, App
Control unit (optional)	RLS T2 WS, RLS G1 WS
EnOcean wireless integration (optional)	E-SM
Mobile control	yes
Housing emission sound pressure level	30 dB (Spacing 1m, sound absorption 10 m <sup>2</sup> )
Packing unit	1 piece
Range	K
GTIN (EAN)	4012799956624

## Sound power level in octave range

	63 Hz	125 Hz	250 Hz	500 Hz	1 kHz	2 kHz	4 kHz	8 kHz	Total
<b>L<sub>WA2</sub> (dB(A))</b>	11	24	23	26	32	24	13	11	38
<b>L<sub>WA5</sub> (dB(A))</b>	11	23	29	27	29	21	12	9	42
<b>L<sub>WA6</sub> (dB(A))</b>	9	22	32	21	32	27	11	9	40

L<sub>WA2</sub>= housing sound power level in dB.

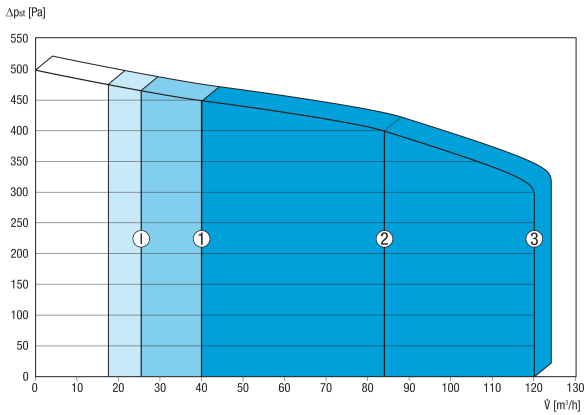
L<sub>WA5</sub>= free inlet sound power level in dB.

L<sub>WA6</sub>= free outlet sound power level in dB.

Operating point: Air volume 84 m<sup>3</sup>/h and external pressure 50 Pa

# WS 120 Trio QRV

## Characteristic curve



The figures shown indicate the pre-set ventilation levels (“factory settings”).

1 = 40 m³/h, reduced ventilation (RV)

2 = 84 m³/h, nominal ventilation (NV)

3 = 120 m³/h, intensive ventilation (IV)

I = Interval or “humidity protection operation” depending on RV

Individual settings available:

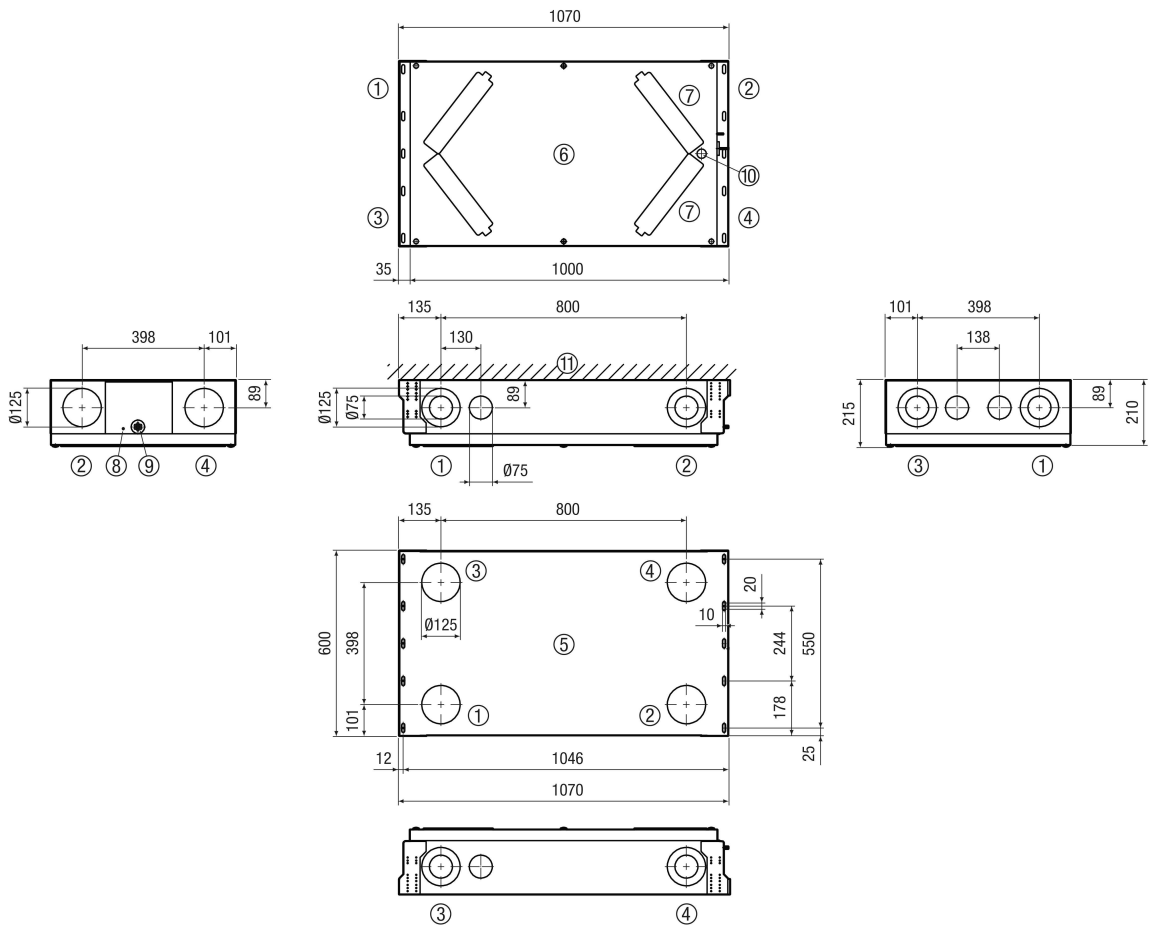
RV = 40 m³/h - 120 m³/h

NV = 40 m³/h - 120 m³/h

IV = 40 m³/h - 120 m³/h

Essential condition:  $RV < NV < IV$  !

## Dimensioned drawing [mm]



- ① Supply air
- ② Exhaust air
- ③ Outgoing air
- ④ Outside air
- ⑤ View from above

## WS 120 Trio QRV

- ⑥ View from below
- ⑦ Filter covers
- ⑧ Mains connection
- ⑨ Connection cable for control panel
- ⑩ USB
- ⑪ Ceiling / wall