

WS 600



Short description

Compact ventilation system with very efficient heat recovery, summer/winter operation and constant volumetric flow

Application examples

Single-family house, Office

Article number 0095.0056

Technical data

Air flow volume	200 m³/h / 550 m³/h
Rotating speed	2.070 1/min
Speed controllable	✓
Type of voltage	Alternating current
Rated voltage	230 V
Frequency	50 Hz/60 Hz
Maximum power consumption	220 W
I _{max}	1 A
Degree of protection	IP 00
Installation site	Cellar / Storage tank / Jamb wall / Utility room / Heating room
Housing material	Sheet steel, galvanised
Colour	Light grey
Weight	100
Weight including packaging	122 kg
Filter class	G4
Connection diameter	224 mm
Width	700 mm
Height	1.190 mm
Depth	560 mm
Width with packaging	1.690 mm
Height with packaging	590 mm
Depth with packaging	810 mm
Airstream temperature at I _{Max}	50 °C
Ambient temperature	50 °C
Degree of heat provision	90 %
Heat exchanger construction type	Condensation rotor
Packing unit	1 piece
Range	K
GTIN (EAN)	4012799950561

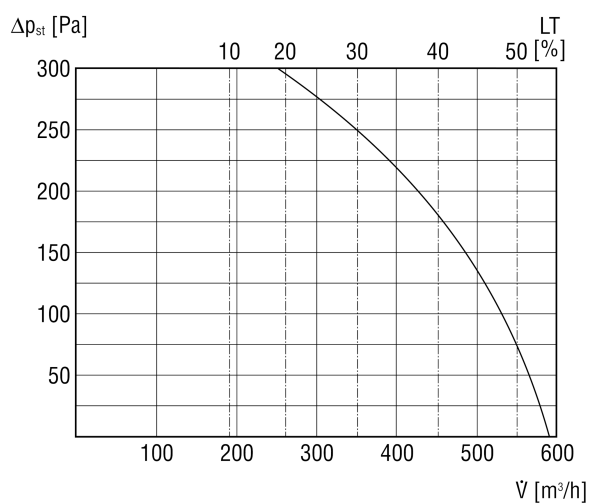
WS 600

Sound power level in octave range

	63 Hz	125 Hz	250 Hz	500 Hz	1 kHz	2 kHz	4 kHz	8 kHz	Total
L_{WA2}, Level 3 (dB(A))	45	48	46	38	32	33	36	28	51
L_{WA5}, Level 3 (dB(A))	35	40	39	39	39	20	15	5	46
L_{WA6}, Level 3 (dB(A))	38	51	54	58	59	44	39	40	63

L_{WA2}= housing sound power level in dB.
 L_{WA5}= free inlet sound power level in dB.
 L_{WA6}= free outlet sound power level in dB.

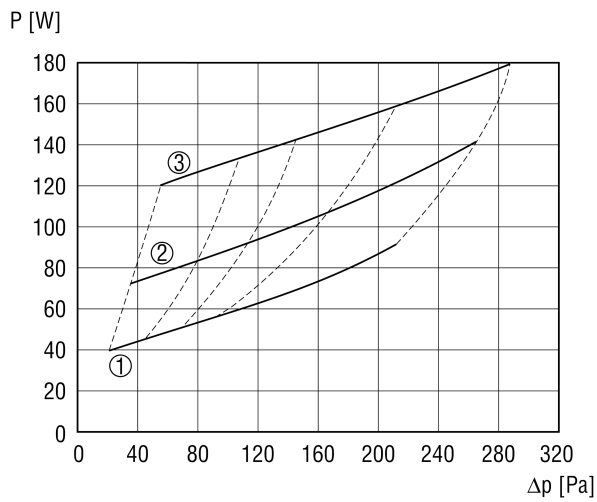
Characteristic curve



LT - Power unit setting

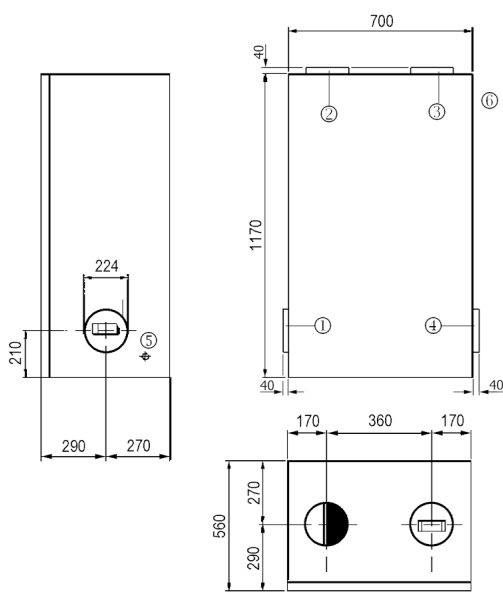
WS 600

Characteristic curve



- ① Step 1 = 200 m³/ h
- ② Step 2 = 300 m³/ h
- ③ Step 3 = 400 m³/ h

Dimensioned drawing [mm]



- ① Outside air
- ② Exhaust air
- ③ Supply air
- ④ Outgoing air
- ⑤ Condensation connection
- ⑥ Electrical connection