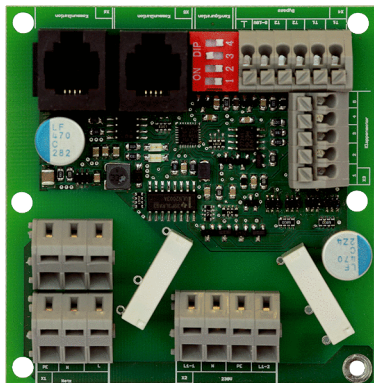


ZP 1



Short description

Additional circuit board for WS 120 Trio, WS 160 Flat, WS 170, WS 300 Flat, WR 310 / WR 410, WS 320 and WS 470 centralised ventilation units. For example, to control an external supplementary heat register or a regulated pump for brine earth heat exchangers.

Article number

0092.0554

Technical data

Weight	0,08 kg
Weight including packaging	0,18 kg
Width	71 mm
Height	77 mm
Depth	83 mm
Width with packaging	170 mm
Height with packaging	83 mm
Depth with packaging	160 mm
Packing unit	1 piece
Suitable for products	WS 160 Flat, WS 170 KB., WS 320, WS 470, WR 310, WR 410
Range	K
GTIN (EAN)	4012799925545

ZP 1

Dimensioned drawing [mm]

