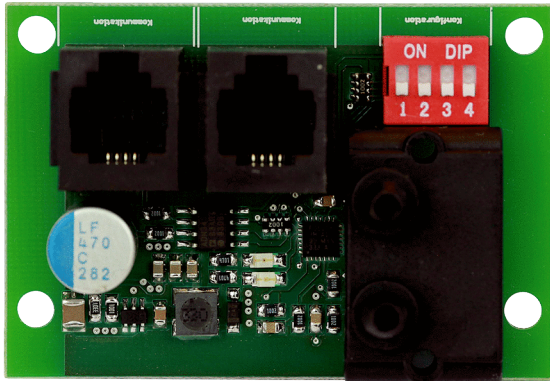


# ZP 2



## Short description

Additional circuit board for WS 120 Trio, WS 160 Flat, WS 170, WS 300 Flat, WR 310 / WR 410, WS 320 and WS 470 centralised ventilation units. For example, for operating the fans with pressure consistency or for differential pressure-controlled filter monitoring.

Article number 0092.0555

## Technical data

Weight	0,06 kg
Weight including packaging	0,16 kg
Width	63 mm
Height	43 mm
Depth	79 mm
Width with packaging	173 mm
Height with packaging	79 mm
Depth with packaging	157 mm
Packing unit	1 piece
Suitable for products	WS 160 Flat, WS 170 KB., WS 320, WS 470, WR 310, WR 410
Range	K
GTIN (EAN)	4012799925552

# ZP 2

Dimensioned drawing [mm]

