

INSTALLATION INSTRUCTIONS



WB90ARN70/170/80

Installation advice for flat channels in domestic ventilation

General notes

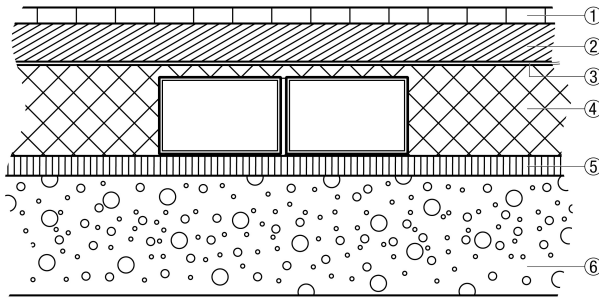
The general building standards for the avoidance of noise transfer as well as the requirements regarding air quality and hygiene are to be taken into account when laying and installing channels.

Installing channels in screed flooring

Channels and adaptors with the dimensions 55/110; 70/170; 80/100; 80/150 are designed for a floor coverage of up to 50 mm.

In the cases of the dimensions 55/220 and 80/200, we recommend that you use two channel pieces 55/110 for 55/220 and 80/100 for 80/200 in parallel for increased compression strength.

Structure of the first floor's flooring



- ① Floor covering
- ② Cement screed
- ③ Screed / construction foil
- ④ Flat channel with compensating insulation
- ⑤ Footfall sound insulation
- ⑥ Concrete

Laying and volumetric flow adjustment

The extensive product range enables you to achieve an exact adjustment of the channels to the desired and required air volumes, by installing different channel cross-sections.

It is possible to achieve good flow values (Zeta values) in small installation areas, by the use of narrow and wide channel elbows.

