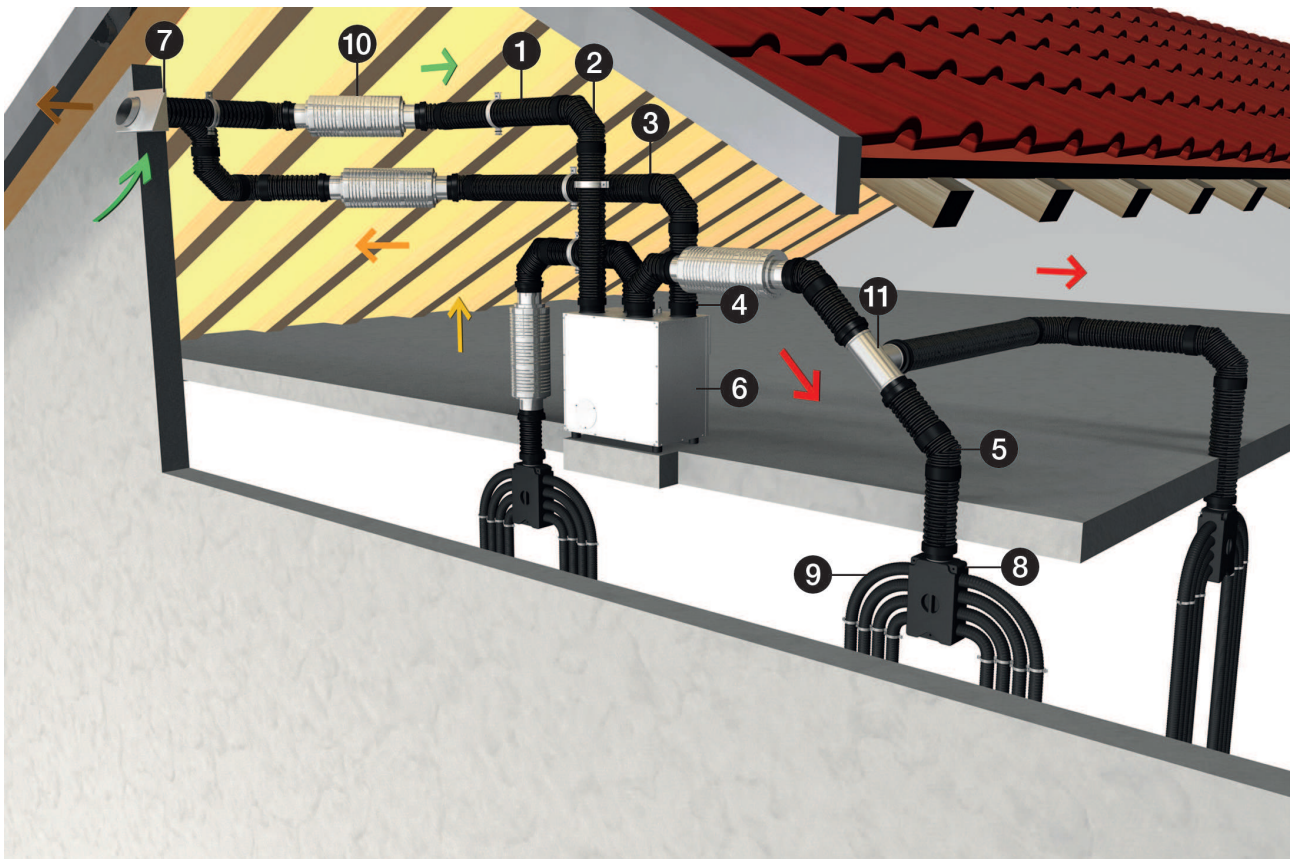


# MT-B160 90/45

## MAICOTherm thermally insulated ventilation duct system

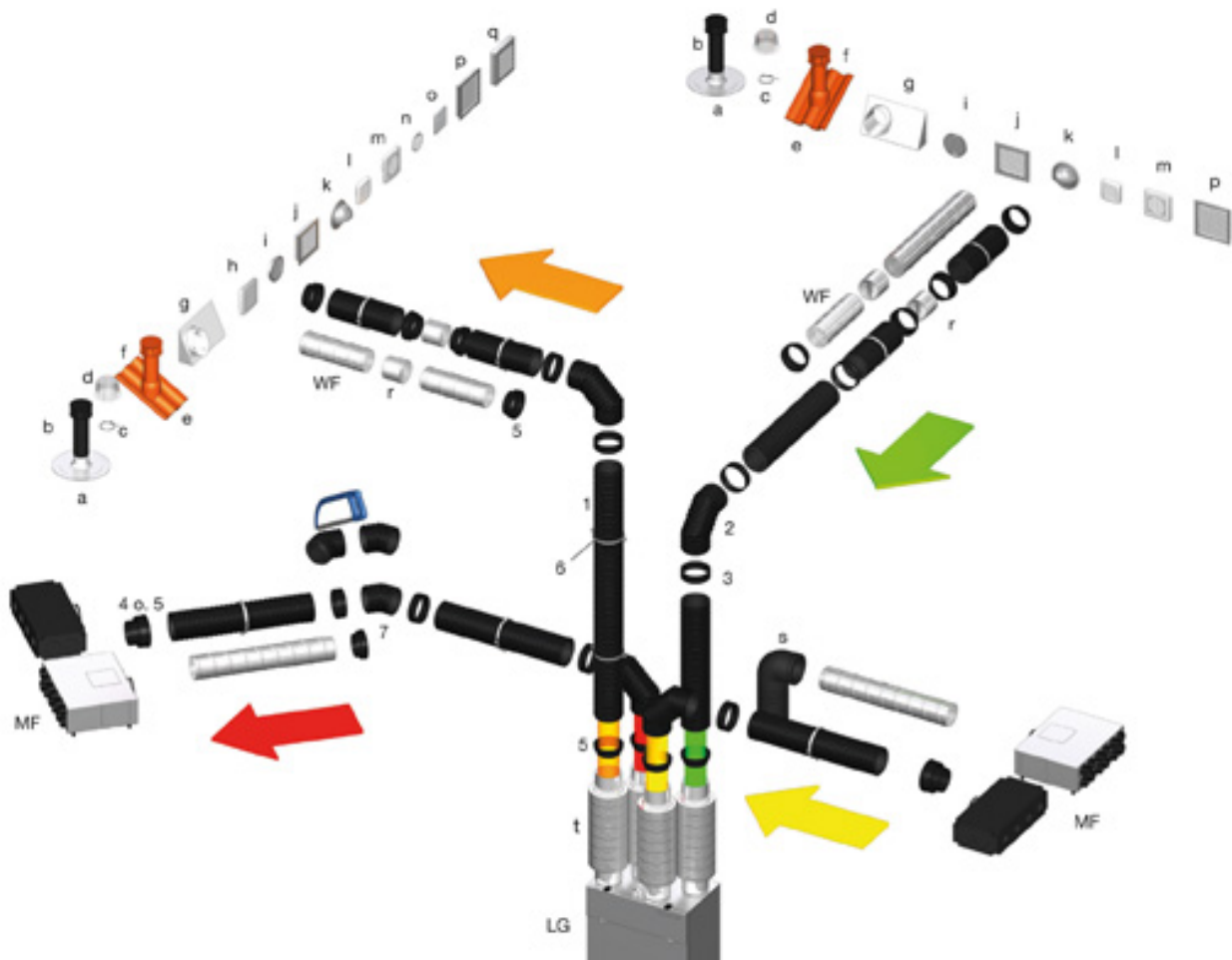
- The thermally insulated MAICOTherm ventilation duct system is an optimum, low-cost alternative solution for e.g. a ventilation duct installation with additional extensive thermal insulation. The innovative ventilation duct system with integrated thermal and acoustic insulation is characterised by having just a few, perfectly matched components:
  - thermally insulated ventilation ducts
  - thermally insulated ventilation duct elbows
  - Ventilation duct connectors
  - ventilation duct couplings
  - Mounting clamps
- The thermally insulated MAICOTherm ventilation duct system is suited to both new buildings and building redevelopment.
- The illustration below shows the use of the thermally insulated MAICOTherm MT ventilation duct system with all relevant system components.
- Here the WR 300 ventilation unit is installed in the roof of a detached single-family house. The outside air is drawn in and the outgoing air blown out through the KWH 20 R combi-wall connection. In each case this is done using suitable tubular sound absorbers. We would recommend installing these tubular sound absorbers in the central supply/exhaust air duct. The thermally insulated MT-R160 ventilation ducts are connected to the thermally insulated MT-B160 90/45 ventilation duct elbows by the MT-V160 ventilation duct connector. The MT-R160 ventilation ducts can be adapted to the local circumstances by cutting to length with a duct saw. The MT-B160 90/45 ventilation duct elbow can also be split into two 45° elbows with a duct saw.
- The MAICOTherm ventilation duct system is connected to the ventilation duct connections of the WR 300 ventilation unit via the MT-Ü160/150 ventilation duct couplings. This guarantees a very quick, reliable and force-fit connection.
- As required, one, two or more air distributors can be connected in the supply and/or exhaust air duct.



# FUNCTIONAL DESCRIPTION

## MT-B160 90/45

- ① MT-R160 ventilation duct
- ② MT-B160 45/90 ventilation duct elbow
- ③ MT-V160 ventilation duct connectors
- ④ MT-Ü160 ventilation duct coupling
- ⑤ 45° elbow of MT-B160 45/90
- ⑥ WR 300 ventilation unit
- ⑦ KWH 20 R combi-wall connection
- ⑧ MF-V63 air distributor
- ⑨ MF-F63 flexible duct
- ⑩ RSR tubular sound absorber
- ⑪ AB branch



- 1 Ventilation duct, thermally insulated MT-R125
- 2-90° ventilation duct elbow, thermally insulated MT-B125 90/45
- 3 Ventilation duct connector MT-V125
- 4 ventilation duct couplings, asymmetrical MT-Üa125
- 5 Ventilation duct coupling, symmetrical MT-Ü125
- 6 Mounting clamp MT-LS125
- 7-45° ventilation duct elbow, thermally insulated MT-B125 90/45

More ventilation components

MF - Ventilation duct system MAICO Flex

WF - Folded spiral-seams duct

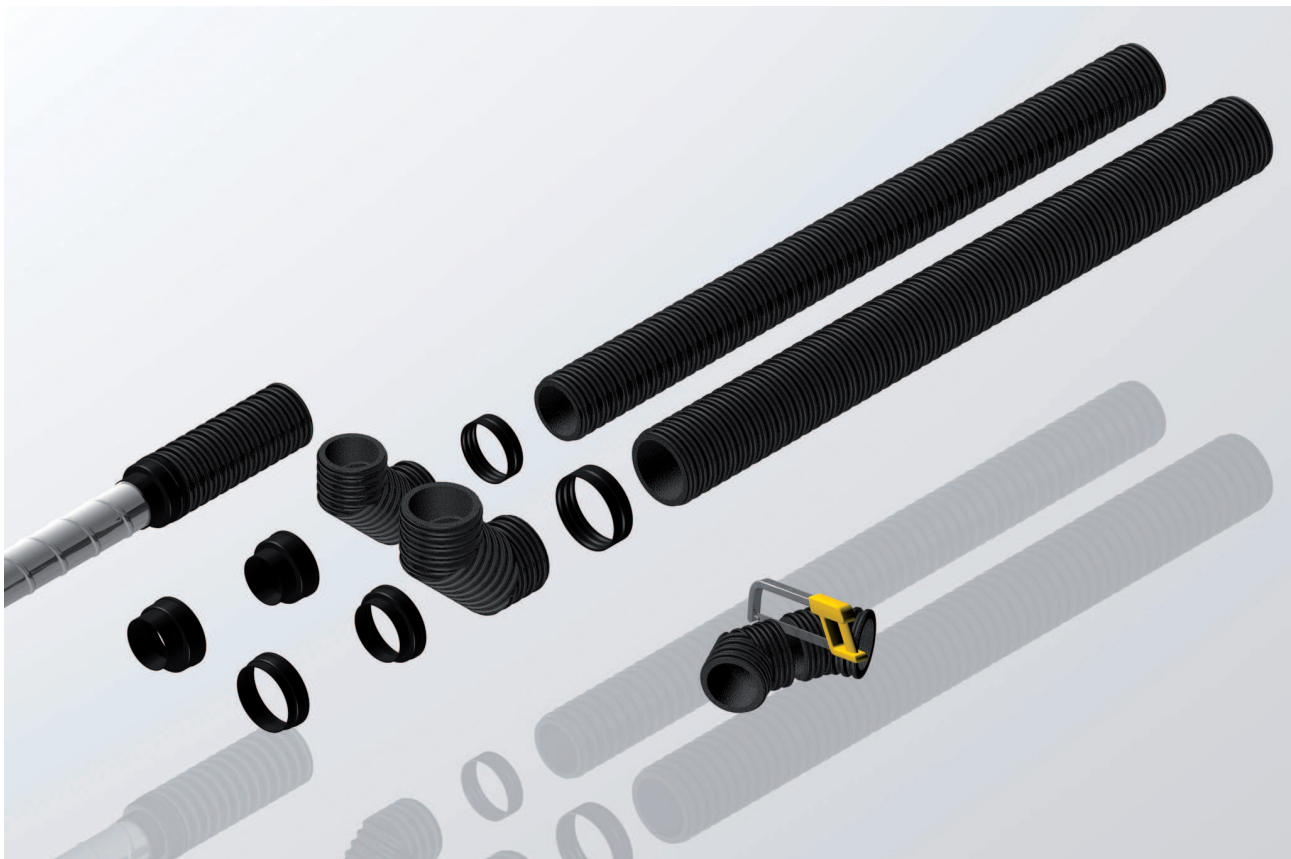
a Roofing tile for flat roofs DP 125 A

b Roof outlet DF 125

## FUNCTIONAL DESCRIPTION

### MT-B160 90/45

- c Mounting clamp BS 125
- d Rain protection grille RG 125
- e Roofing tile for pitched roofs DP 125
- f Roof outlet DF 125
- g Combi-wall connections KWH 16
- h shutter AP 120
- i External grille, aluminium, round -
- j External grille, aluminium, angular -
- k Stainless steel cowl LH-V2A 12
- l External grille SG 120
- m External grille SG15
- n External grille, round MGR 80/125
- o External grille, angular MGE 80/125
- p External grille -
- q Shutter -
- r Automatic backflow preventer AVM 12
- s Thermally insulated long -  
pipe elbow
- t Tubular sound absorber RSR 12, RSR 12/50



# FUNCTIONAL DESCRIPTION

MT-B160 90/45

