

*PushPull*  
**MAICO**

Heat Recovery without Ducts

Simple – Made in Germany

# For New Buildings and Redevelopment Projects

PushPull is the new decentralised ventilation unit featuring **heat recovery and sound-insulation characteristics** for new buildings and redevelopment projects.

The ventilation unit was designed specifically to meet the **needs of building contractors and the housing industry** both for **new buildings as well as redevelopment** projects. To combat structural issues such as mould, controlled **room ventilation is used here** as a solution that also offers comfort features.

To balance the volumes of fresh and exhaust air, at least two or an even number of PushPull units should be used. **Up to four units can be operated using a single control unit.**

Ventilation operates according to the principle whereby two PushPull units draw in and extract air in turn. In exhaust air operation, the PushPull ventilation unit conveys the used and moist air, e.g. from the living room, out of the building. **The thermal energy of the exhaust air is stored in the heat exchanger.**

## For significantly more fresh and clean air

**Two G3 filters provide extremely fresh air.** The M6 fine-particulate filter can be used as an option. Double-filtering keeps the heat exchanger and fan clean for significantly longer. The upward air outlet provides improved air circulation and reduces the occurrence of draughts. The **electric shutter** prevents cold air from entering, even when the unit is switched off. The optimally shaped stainless steel external cover keeps condensation safely away from the wall.

## Eco-friendly and quiet

**MAICO products deliver convincing performance time and again** thanks to their exceptional **efficiency** and **extremely low noise** emissions. This makes them ideal for **living rooms and bedrooms**. PushPull is energy efficient, contributes actively to environmental protection and is easy on the pocket. The innovative ceramic heat exchanger can recover up to **90% of the energy in the room.**

## Excellent preventative health care

In addition to its high energy efficiency, the unit offers optimum **preventative health care by countering the formation of mould**, reducing indoor air pollutants as well as pollen, dust, insect and noise pollution. PushPull is equipped with **two coarse particulate filters**. An optional fine-particulate filter (M6) can also be used. The filters are generally replaced once annually. The control panel indicates when filter replacement is due. To replace the filters, simply open the front cover and pull out the slide-in unit.




**The filters can then easily be removed.**

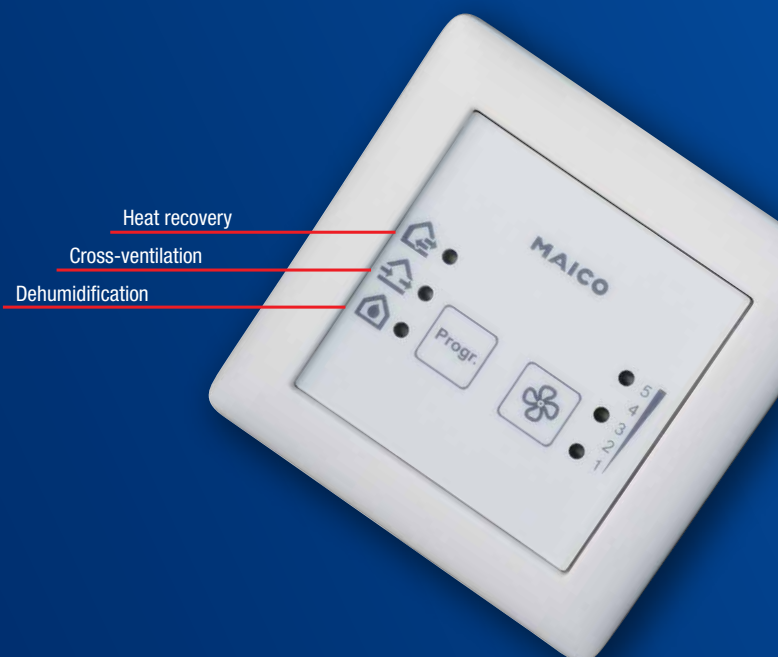
The corresponding ventilation unit operates in supply air mode and brings fresh, filtered and preheated air into the room at the same time. After 70 seconds, the ventilation units swap function, i.e. the **air flow is now reversed**. The corresponding ventilation unit can also be located in the neighbouring room. A door ventilation grille MLK then permits the necessary circulation of air in both rooms. **Installation is extremely straightforward and does not involve routing any pipes.** All that's needed is a 220 mm core hole in the wall.

Thanks to its air flow rate of up to 55 m<sup>3</sup>/h, the ventilation system can also be used in larger rooms.

## Comprehensive functionality guarantees convenient ventilation

PushPull can be operated from the external controller. Three operating modes and five ventilation levels are specified. **The individual operating modes are:**

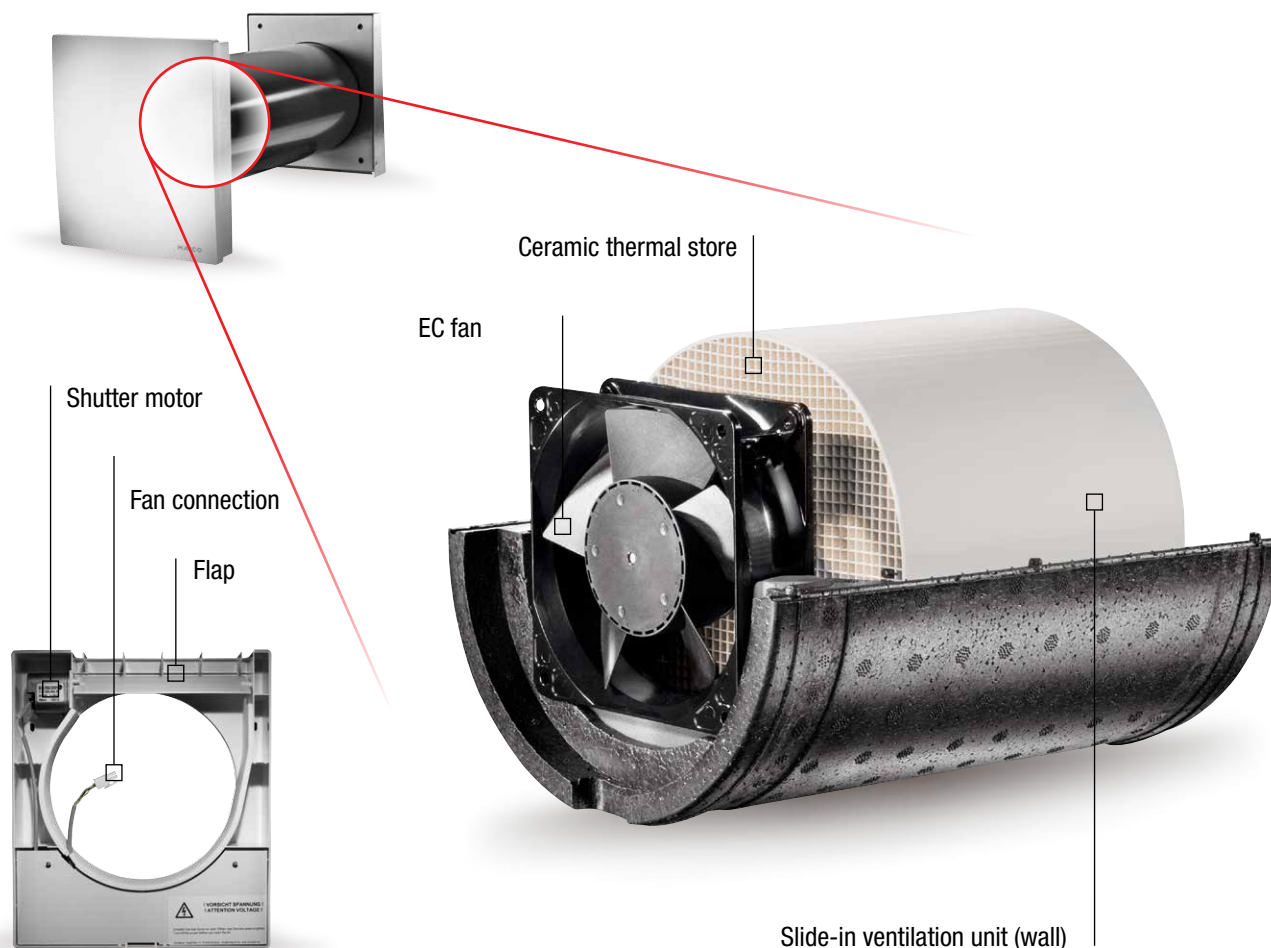
-  The ventilation levels are set manually. The units are in **heat recovery mode**.
-  **Cross-ventilation** with pre-set ventilation levels. Associated units (always two) operate in one direction only, without heat recovery.
-  The **dehumidification program** removes moisture from the room as efficiently as possible.



# At a Glance

## PushPull MAICO

- ✓ Effective ceramic thermal store – up to 90 % efficiency
- ✓ Volumetric flow up to 55 m<sup>3</sup>/h
- ✓ Filter G3 on the outside and inside
- ✓ Circular cross-section, wall core hole 220 mm
- ✓ EC motor technology
- ✓ Installed in outside walls or in window soffits
- ✓ Elegant, simple design
- ✓ For living rooms, offices, etc.
- ✓ New buildings and redevelopment projects
- ✓ 100 % requirements-based control

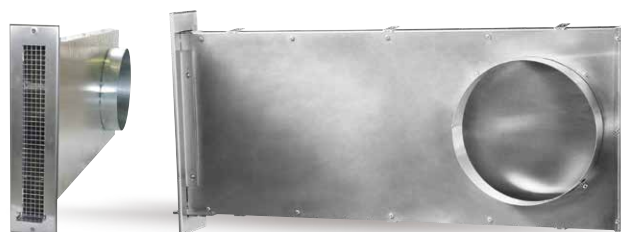


**PushPull is available in two variants**



**PP 60 KA-SR installation in outside walls**

Exterior cover (polished stainless steel)



**PP 60 KL-SR for installation in soffits**

Soffit duct (aluminium panel, polished stainless steel grille)

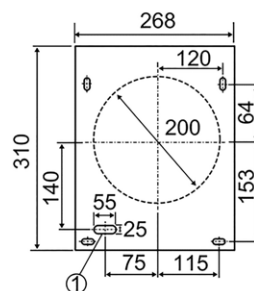
# Technical data **MAICO** *PushPull*

## Unit design

**Final assembly kit PP 60 K-SE**



Article number	0095.0204
Power consumption	2/2.4/2.9/3.7/4.8 W
Filter class	2 x G3 (M6 optional)
Housing material	Plastic EPP
Colour	traffic white, similar to RAL 9016
Sound pressure level	15/37 dB(A)
Thermal recovery level	90 %

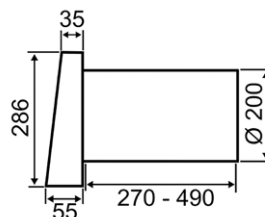


**Shell kit PP 60 KA-SR**

**Outside wall**



Article number	0095.0205
Air conduction	Direct via outside wall
Flow rate	17/22/30/45/55 m <sup>3</sup> /h
Nominal size	200 mm
Core hole	220 mm

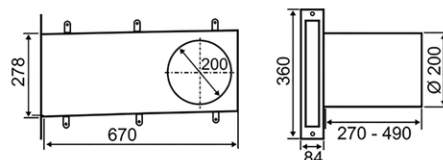


**Shell kit PP 60 KL-SR**

**Window soffit**



Article number	0095.0206
Air conduction	Deflection via window soffit
Flow rate	17/20/28/43/50 m <sup>3</sup> /h
Nominal size	200 mm
Core hole	220 mm



**Room air control**

**RLS PP-K**



Article number	0157.0199
Short description	<ul style="list-style-type: none"> <li>• 3 operating modes</li> <li>• 5 ventilation levels</li> <li>• Maximum of 4 PushPull units addressable</li> </ul>

**Humidity sensor PPH-K**



Article number	0157.0200
Short description	<ul style="list-style-type: none"> <li>• Required for the "dehumidifying" operating mode</li> <li>• One humidity sensor is required for each control unit</li> </ul>

### Common characteristics

- ✓ Complete fan unit with ceramic heat exchanger
- ✓ Internal cover and two integrated G3 filters (M6 optional)
- ✓ External cover made of stainless steel (PushPull 60 **KA-SR**)
- ✓ Soffit element made of stainless steel/aluminium (PushPull 60 **KL-SR**)
- ✓ Slide-in unit made completely of soundproofing EPP
- ✓ PVC wall installation sleeve with two plaster protective covers and eight wedges for aligning the sleeve in the wall core hole
- ✓ Accessories required:
  - Room air control RLS PP-K
  - Optional: Humidity sensor PPH-K (one PPH-K for each unit)



**Maico Elektroapparate-Fabrik GmbH**  
 Steinbeisstraße 20 · 78056 Villingen-Schwenningen Germany  
 Tel: +49 7720 694-0 · sales@maico.de  
[www.maico-fans.com](http://www.maico-fans.com)

For more information as well as contact details for our service staff, please see [www.maico-fans.com](http://www.maico-fans.com)